

Protected bike lanes on Macaulay Road in North Melbourne and Kensington

City of Melbourne is delivering new kerbside protected bike lanes on Macaulay Road from Eastwood Street to Boundary Road to make the street safer and easier for everyone to use.

More than 400 community members participated in consultation in 2023, and 87 per cent of respondents supported the installation of the protected bike lanes, highlighting the need for improved cycling safety and infrastructure in the area.

This project has been approved by the Victorian Government and delivers on our Transport Strategy 2030 which aims to provide a safer environment for pedestrians and road users, supporting a more liveable city. It is co-funded by City of Melbourne and the Department of Transport and Planning through the Transport Amenity Program (TAP).

What's happening?

In mid-February 2026, we'll start works to deliver protected bike lanes from Eastwood Street to Boundary Road.

These works are expected to be completed by mid-2026, subject to weather conditions.

The project will deliver:

- new kerbside protected bike lanes on both sides of the road
- a realigned roadway, with the bike lanes sitting next to the footpath separated from traffic by concrete kerbs and parking bays
- new line markings and green surface treatment so that the bike lanes are easier to see
- a consistent 40km/h speed limit
- improved signals at intersections to keep traffic moving
- retention of 29 car parking bays, with 36 bays removed.

A design plan is included with more information.

What to expect during works

- Nearby properties will be notified ahead of construction starting.
- Work hours will be 7am to 5pm Monday to Friday, with occasional overnight and weekend work.
- We will aim to maintain pedestrian, car and bike travel at all times. Properties will be notified if access is going to be impacted.
- The speed limit will be temporarily reduced and car parking will be suspended along impacted sections of Macaulay Road during construction to help bike riders travel safely through the area.
- Works may produce some dust and noise, and measures will be in place to reduce these impacts as much as possible.

What's been completed?

In 2025, we delivered safety improvements at the Rankins Road and Macaulay Road intersection including new yellow kerbs, line markings and green surface treatments, improving visibility and encouraging drivers to slow down when turning.

Future works

Works to deliver protected bike lanes from Boundary Road to Arden Street are expected to start in financial year 2026-27. We will notify the community when more information is available.



To find out more, scan the QR code, contact **9658 9658** or visit melbourne.vic.gov.au/cityprojects



Interpreter services

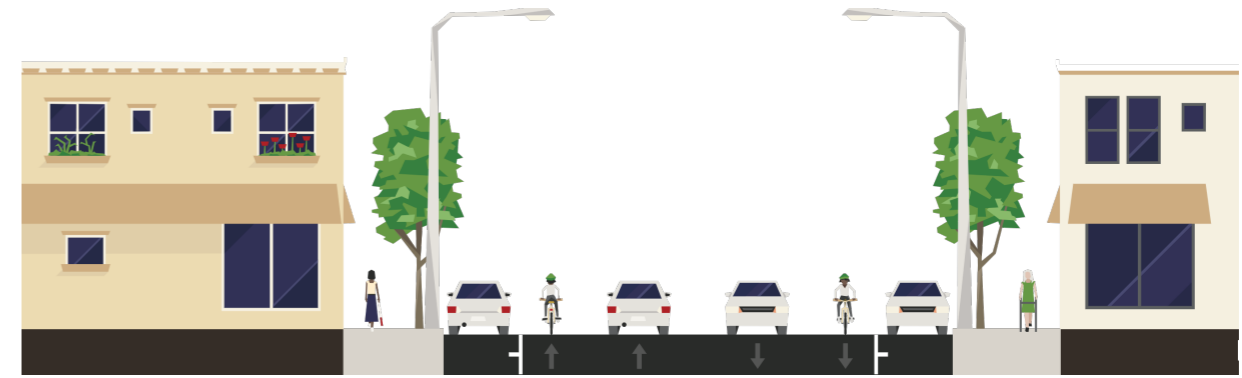
We cater for people of all backgrounds
Please call 03 9280 0726



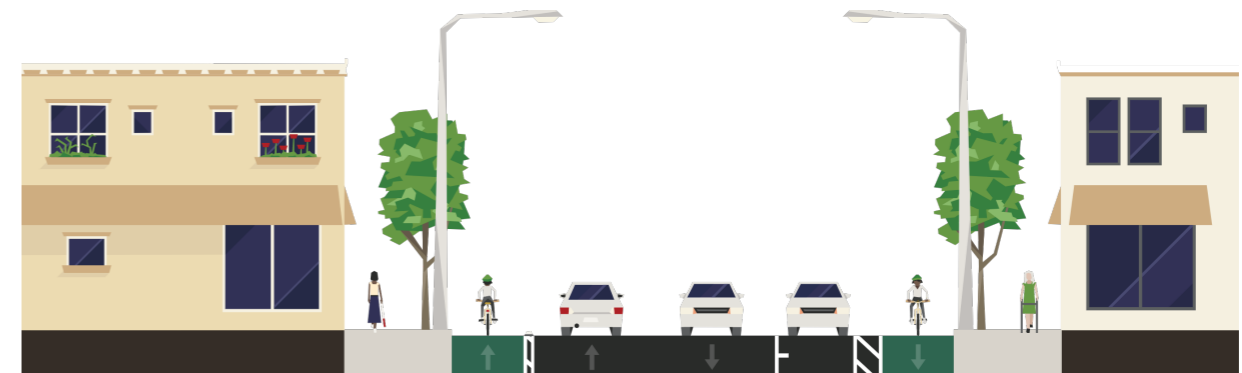
MACAULAY ROAD PROTECTED BIKE LANES: EASTWOOD STREET TO BOUNDARY ROAD

Key changes:

- 1.4 kilometres of new protected bike lanes (700 metres in each direction) on Macaulay Road from Eastwood Street to Boundary Road.
- A realigned roadway, with the bike lanes sitting next to the footpath separated from traffic by concrete kerbs and parking bays.
- New line markings and green surface treatment so that the bike lanes are easier to see.
- A consistent 40km/h speed limit.
- Improved signals at intersections to keep traffic moving.
- Retention of 29 car parking bays, with 36 bays removed.



The existing road layout on Macaulay Road



The new road layout that will be delivered on Macaulay Road

Details of treatments for this project



Concrete separator kerb



Separation at intersections



Concrete separator island



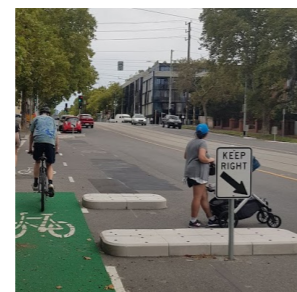
Mountable kerb



Road narrowing/painted island



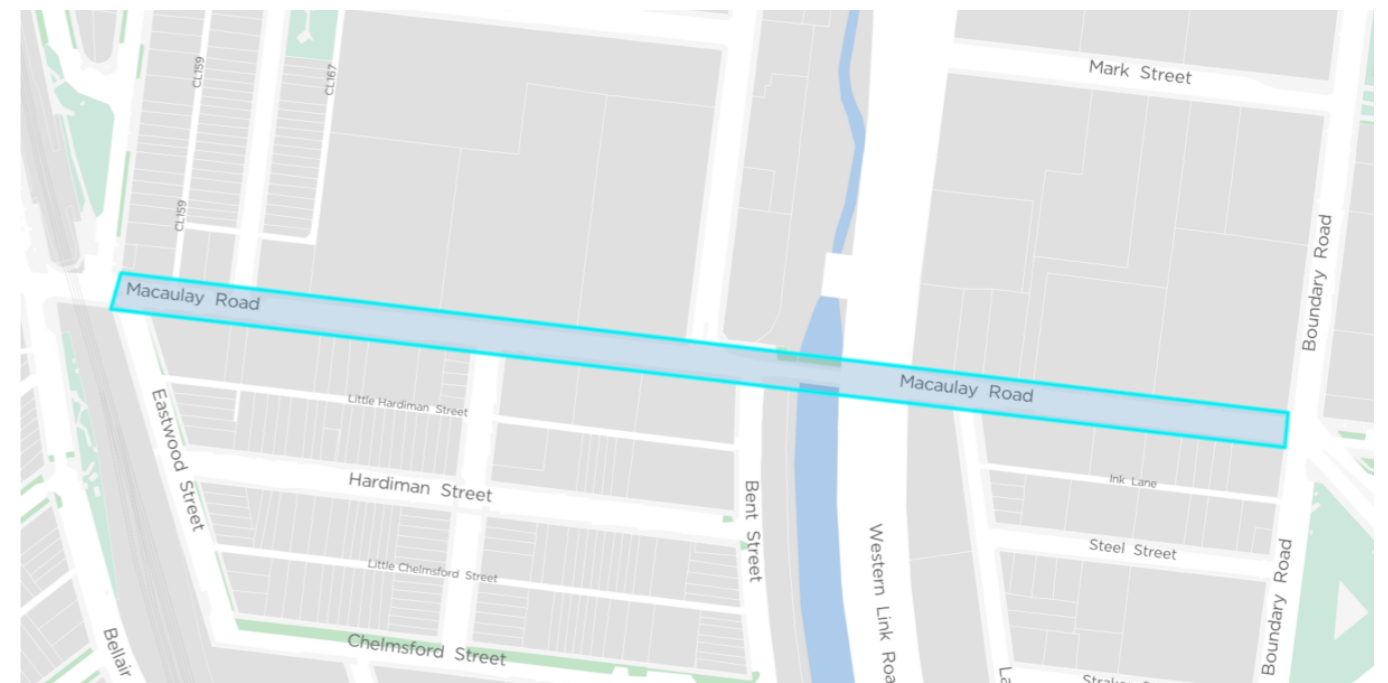
Green surface treatment at selected locations



Safer crossing points



Bike hook turns



Map of Macaulay Road bike lanes

MACAULAY ROAD BIKE LANES (1/2)

Section: Eastwood Street to Moonee Ponds Creek

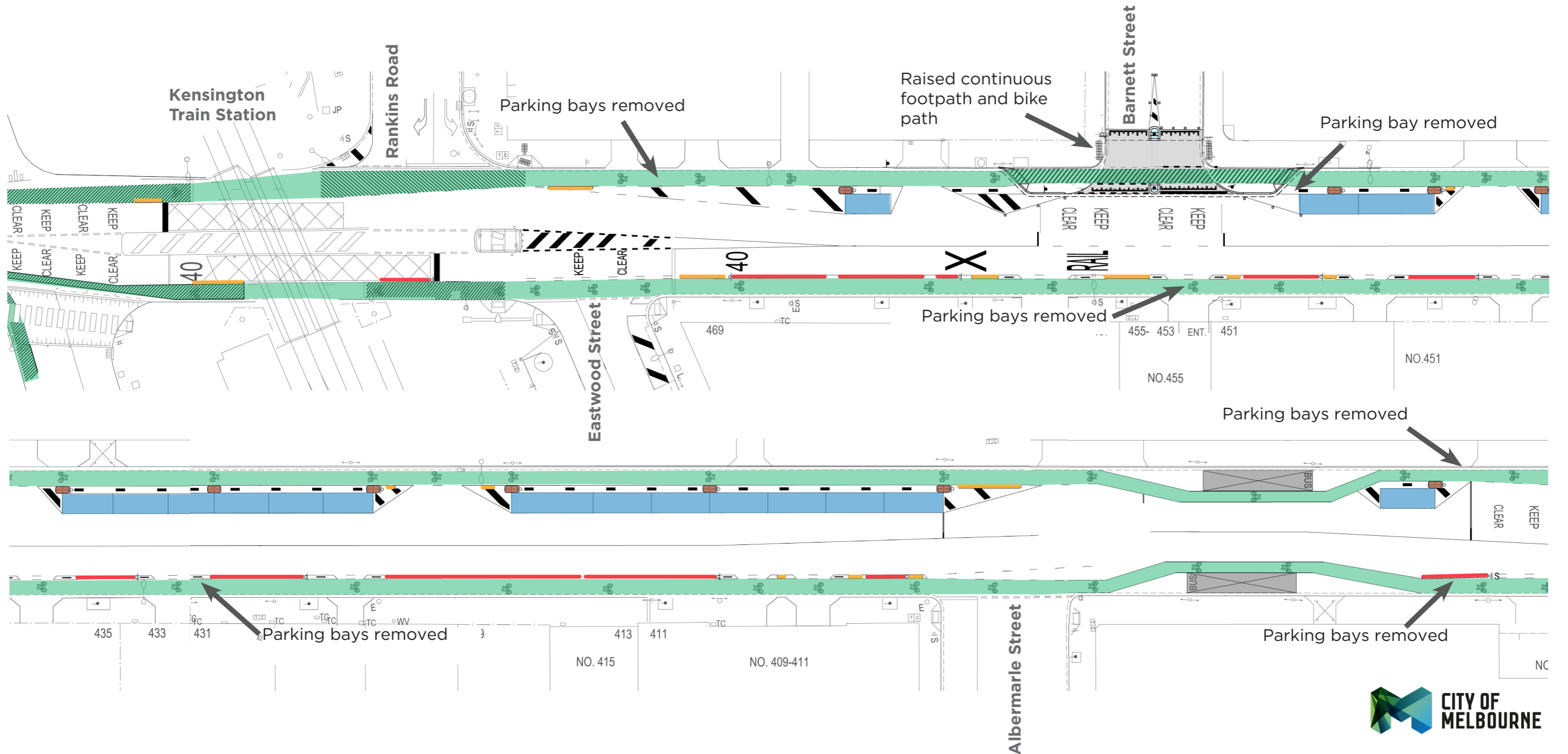
Key changes

- Kerbside protected bike lanes
- Parking retained on the north side of the street
- 15 parking bays removed
- Raised continuous footpath at Barnett Street
- Centre line shifted south by approximately one metre.



Legend:

- Protected bike lane
- Parking bays
- Concrete island
- Concrete kerb
- Green surface treatment
- Mountable kerb
- Traffic island
- Bus zone



MACAULAY ROAD BIKE LANES (2/2)

Section: Moonee Ponds Creek to Boundary Road

Key changes

- Kerbside protected bike lanes
- Parking retained on the north side of the street
- 21 parking bays removed
- Traffic lane incorporating sharrows over Moonee Ponds Creek due to existing narrow bridge
- One lane removed at Stubbs Street intersection
- Centre line shifted south by approximately one metre



Legend:

- Bike lane
- Parking bays
- Concrete island
- Concrete kerb
- Green surface treatment
- Mountable kerb
- Traffic island
- Bus zone

