

M2050 VISION

Ready for
our future



CITY OF MELBOURNE

Acknowledgement of Traditional Owners

The City of Melbourne respectfully acknowledges the Traditional Owners of the land we govern, the Wurundjeri Woi-wurrung and Bunurong / Boon Wurrung peoples of the Kulin and pays respect to their Elders past and present.

We acknowledge and honour the unbroken spiritual, cultural and political connection they have maintained to this unique place for more than 2000 generations. We accept the invitation in the Uluru Statement from the Heart and are committed to walking together to build a better future.

Ready for our future

Thousands of people shaped Melbourne’s 2050 vision. We collected the ambitions and priorities from people who live, work, study, visit or own a business across the municipality. This vision is a shared, long-term aspiration that outlines our community’s desired future for Melbourne. It’s our north star and will guide strategic decision-making, inspire action and unite people around common goals.

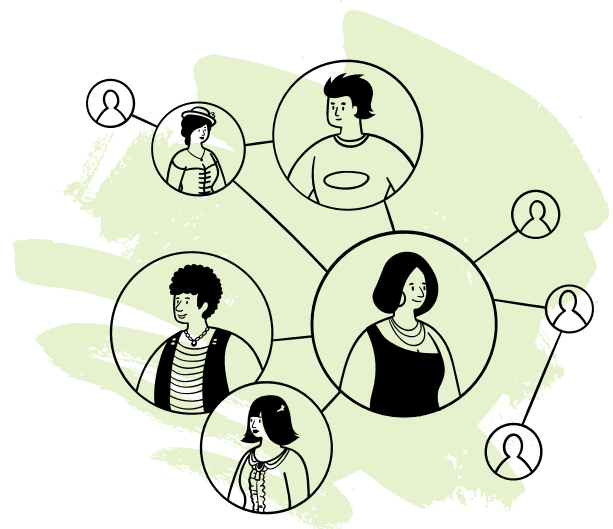
.....
Confirming our M2050 Vision is critical in ensuring Melbourne solidifies its reputation as a diverse, vibrant and magnetic city for decades to come.
.....

In the months and years ahead, we will continue to engage with our community, stakeholders and partners as we work to achieve the vision. We’ll keep working to address current and emerging challenges, while respecting and embracing our city’s unique character, heritage and stories. This vision reflects our community’s aspirations for the kind of city we are and strive to be.

Achieving great city outcomes in a changing world is a dynamic process. It involves many stakeholders who can influence the city, including state and federal government, major landowners, institutions like our universities and hospitals, sports, arts, music, cultural and business innovation precincts, and so on.

The 2050 vision and the community aspirations supporting it are a statement of intent for our city. At the City of Melbourne, we’re making a start by aligning our four-year Council Plan with the vision. To get the full picture of how Melbourne is evolving, we will use the vision and community aspirations to guide our work and monitor how we’re going. This means we’ll be ready to catch trends and adjust our actions, and work with our partners and community to stay on track.

Staying true to our vision and aspirations will give other parts of government, the community, and our stakeholders and partners confidence about how Melbourne will evolve over time: as a place to live, work, run a business, study, visit and experience all that our great city has to offer.



Melbourne's 2050 vision

Liveable
Melbourne,
growing
stronger
together

The community aspirations which underpin our vision are:

A city for people: Melbourne’s strength lies in the diversity, resilience, talents and grit of our people. Our city is made from diverse stories, our celebrated heritage, our intercultural connections, our creativity. Its character comes through commitments to design, music, arts, culture, sport and entertainment.

.....

Optimistic leadership: We govern with transparency and fairness, for a city that will move forward together, where people feel hope and pride in their place. We create opportunities for the next generations and foster leadership among all who live, work, study and visit our city.

.....

Green and alive: Our parks, gardens and greenery are connected across every neighbourhood, street and building. We create vibrant places and experiences, celebrating culture and design.

.....

Back ambition and champion innovation: Bold ideas flourish here, where entrepreneurship, creativity and design shape our city’s future. Melbourne is a city of opportunity and prosperity, where people can live their best lives.

.....

Building on our foundations: Our city is shaped by the custodianship of First Peoples, whose connection to Country spans more than 2000 generations. We celebrate the rich migrant stories of resilience, aspiration and contribution that have helped define Melbourne’s identity. Together, we build on these foundations – guided by our city’s motto*, Vires Acquirit Eundo (We gather strength as we go) – to create our shared future.

.....

Grounded in First Nations knowledge and culture: Our city honours and empowers First Peoples self-determination, guided by their knowledge, culture and enduring connection to Country, working together to care for and shape Melbourne for the next 2000 generations to come.

.....

Leading on climate action: Our systems are connected, our city is renewable, our communities are resilient and prepared. We restore, renew and replenish our natural environment and biodiversity.

.....

Delivering for everyone: We design our city for equity, dignity and connection, to improve housing, health and wellbeing – no matter your life stage, cultural background, gender, ability, or financial position.

.....

* The City of Melbourne’s motto is 182 years old, established in 1843.

Preparing our vision in a changing world

Building on our strengths

Melbourne is a city where everybody is welcome. We're known for our gardens, coffee, food, laneways, music, sports, arts and culture. Everything you need is a short walk or ride away. The fabric and vibrancy of our city – the Melbourne vibe and our unique character – are created by our diverse community, shared cultures and creativity.

The delight of Melbourne is that it slowly unfolds before you: it's a city explored by locals, visitors and workers. Where you peel back the layers and search down laneways for your favourite coffee, bar, neighbourhood shop or local park.

Ours is a global city, shaped by migrant stories, our traditional values and a local way of living. A city with a big heart and plenty of ambition. On any given day, we estimate there are up to one million people in central Melbourne: living, working, studying, running a business and visiting one of the many vibrant events and experiences happening in our city, day and night. We're problem-solvers, inventors and collaborators. An enterprising economic powerhouse, a network of neighbourhoods, a university town, a hub of culture and unique experiences.

Why a 2050 vision now?

When it comes to quality of life today, Melbourne sits in the top five global cities. We feel the world changing around us. We want to make sure that our community – and all who have a connection to or an interest in our city – can share in the opportunities before us, grow their ideas, work together and be a part of a great future in Melbourne.

A long-term vision helps us make the most of Melbourne's creative and inventive spirit. It shows us how to take advantage of the opportunities ahead of us. It also empowers us to protect what we value and prepares us for changes that may come our way.

Setting a vision for 2050 makes room for a conversation about how we will create opportunity, be led by hope, nurture great ideas and share prosperity across our city in the future.



How might we get there?

We will realise our M2050 Vision through hundreds of big and small decisions.

Our vision will guide the decisions we make about the city's feel, form and function in the future. It will guide how we work together in the years ahead. Imagining Melbourne in the future and reflecting on what we value about our city helps us gain perspective on what to prioritise today.

We will embed this vision in all that we do. We invite others to deliver, contribute and collaborate on actions that shape the city our community envisions: a city that works for everyone, where diversity is a strength and everybody is welcome.

Our ambition for this 2050 vision is that it is owned by all Melburnians. Now is the time to harness the many opportunities before us, leveraging our creativity, optimism and bold ideas as only Melbourne can.



