

APPENDIX 1: EXAMPLE TOWN PLANNING LANDSCAPE PACKAGE SUBMISSION





IMAGE: D Hannah 2024

DRAWING INDEX

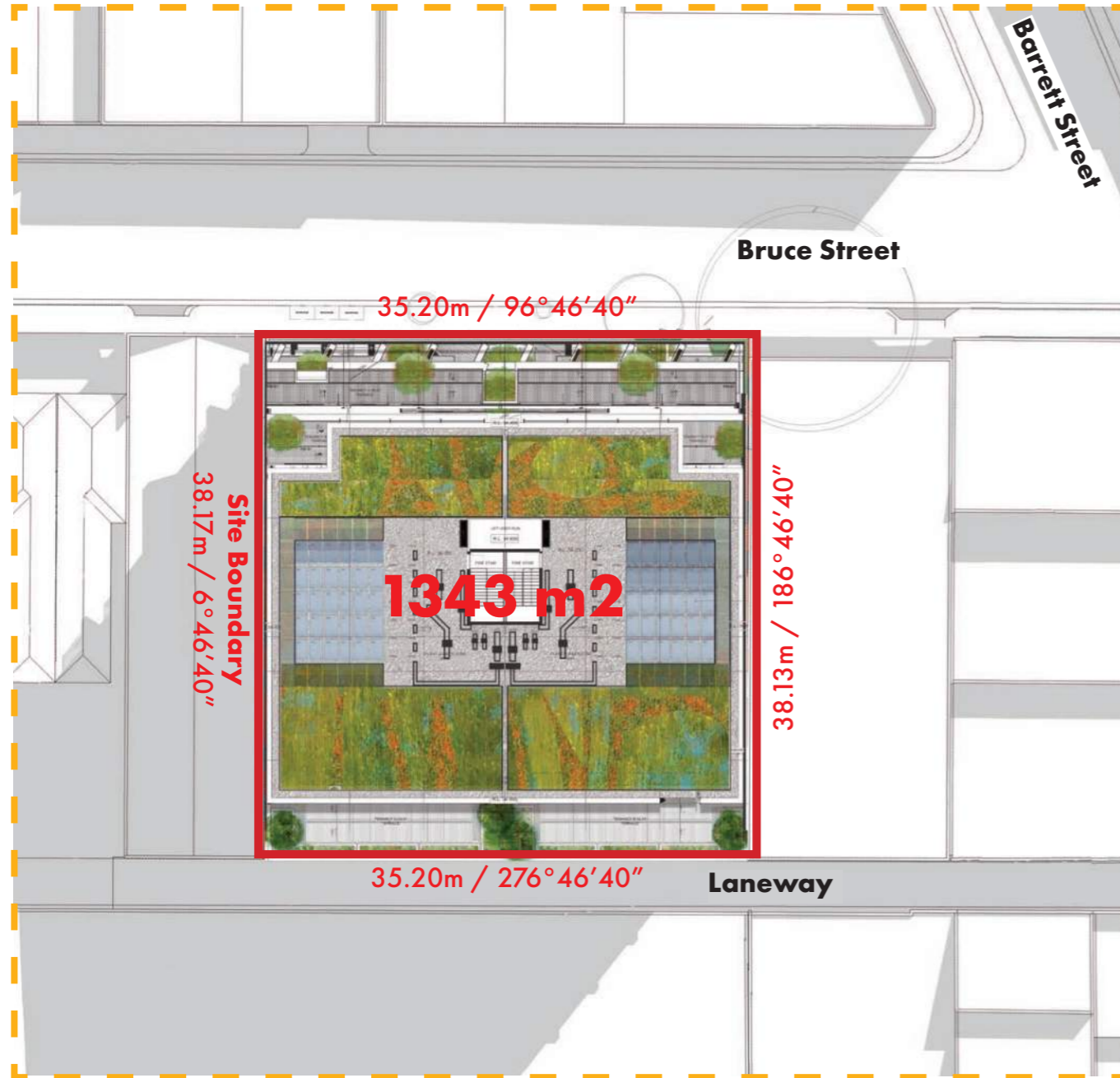
DWG	TITLE	SCALE	REV
00	COVER PAGE	Not to scale	E
01	SITE LOCATION + SITE PLANS	Not to scale	E
02	GROUND FLOOR PLAN	1:200 @ A3	E
03	FIRST FLOOR PLAN	1:200 @ A3	E
04	SECOND FLOOR PLAN	1:200 @ A3	E
05	THIRD FLOOR PLAN	1:200 @ A3	E
06	FOURTH FLOOR PLAN	1:200 @ A3	E
07	FIFTH FLOOR PLAN	1:200 @ A3	E
08	SIXTH FLOOR PLAN	1:200 @ A3	E
09	SEVENTH FLOOR PLAN	1:200 @ A3	E
10	ROOF PLAN & DETAIL AERIAL PHOTO	Not to scale	E
11-12	ELEVATIONS	1:200 @ A3	E
13	SECTION A	1:200 @ A3	E
14-15	DETAIL SECTIONS	1:25 @ A3	E
16-24	PLANTING PLANS & GREEN FACTOR TOOL TABLES	1:75 @ A3	E
25-29	PLANT REPORT	NA	E
30-31	PLANT SCHEDULES	NA	E
32	GREEN FACTOR SCORECARD	NA	E
33-34	PLANTING	NA	E
35-36	IMAGES	NA	E

GREEN FACTOR TOOL TOWN PLANNING LANDSCAPE SUBMISSION PACKAGE

14-26 Bruce Street, Kensington

20250122 REVISION F

Site location and site plan



NOT TO SCALE



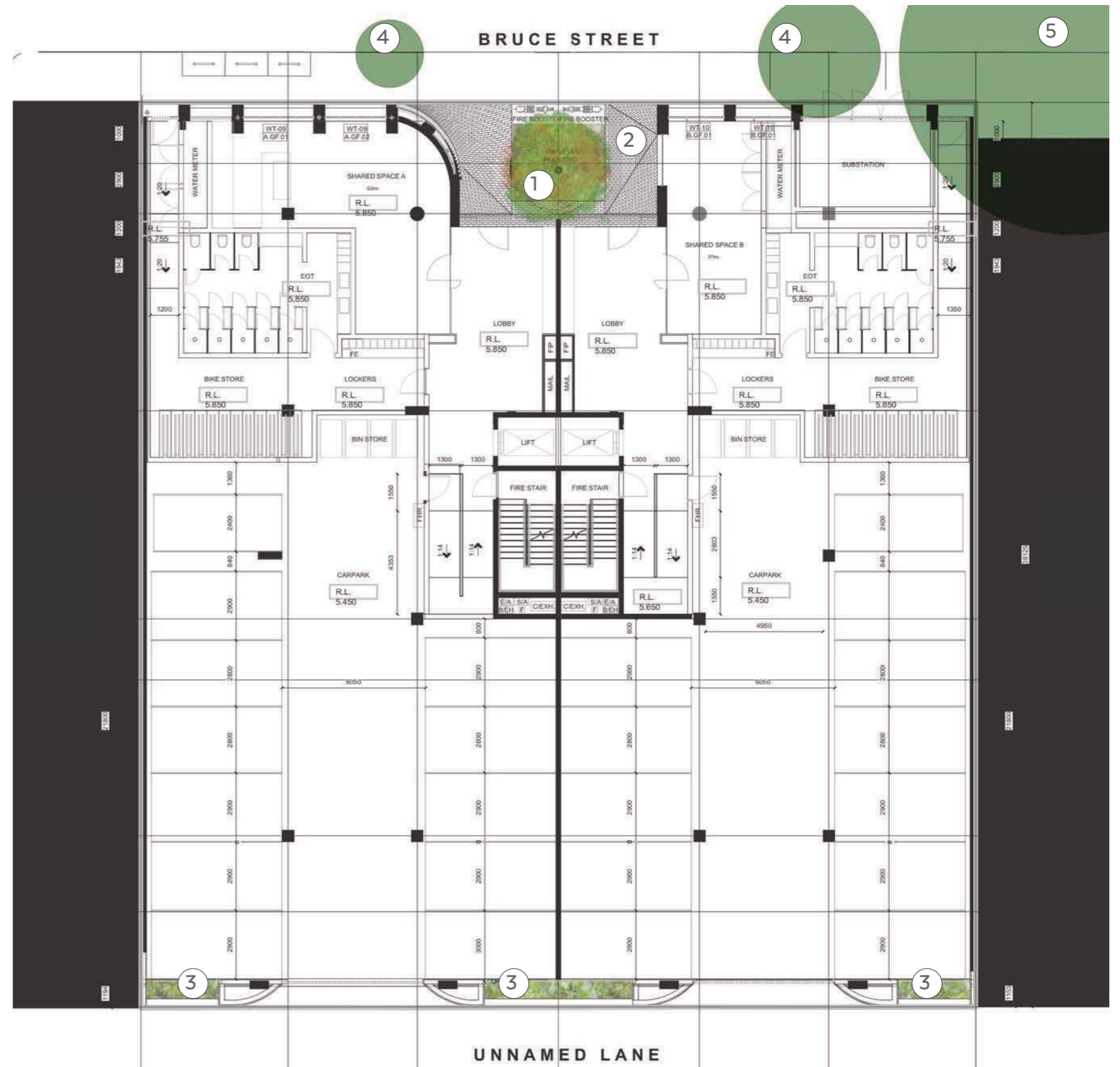
NOT TO SCALE

Ground floor plan

Ground floor 1:200 @ A3

Legend

1. *Tristaniopsis luarina* 'Luscious' Watergum tree growing in deep soil zone. This needs to be carefully managed and installed with formative pruning to match the space allowance. Tree to be installed through open space above to enable a larger size.
2. Paving by architect.
3. Ground floor planters on southern side with shade tolerant vines or multi tiered shelf of cascading plants.
4. Existing Manchurian Pears in street retained protected.
5. Existing large Melaleuca retained and protected.

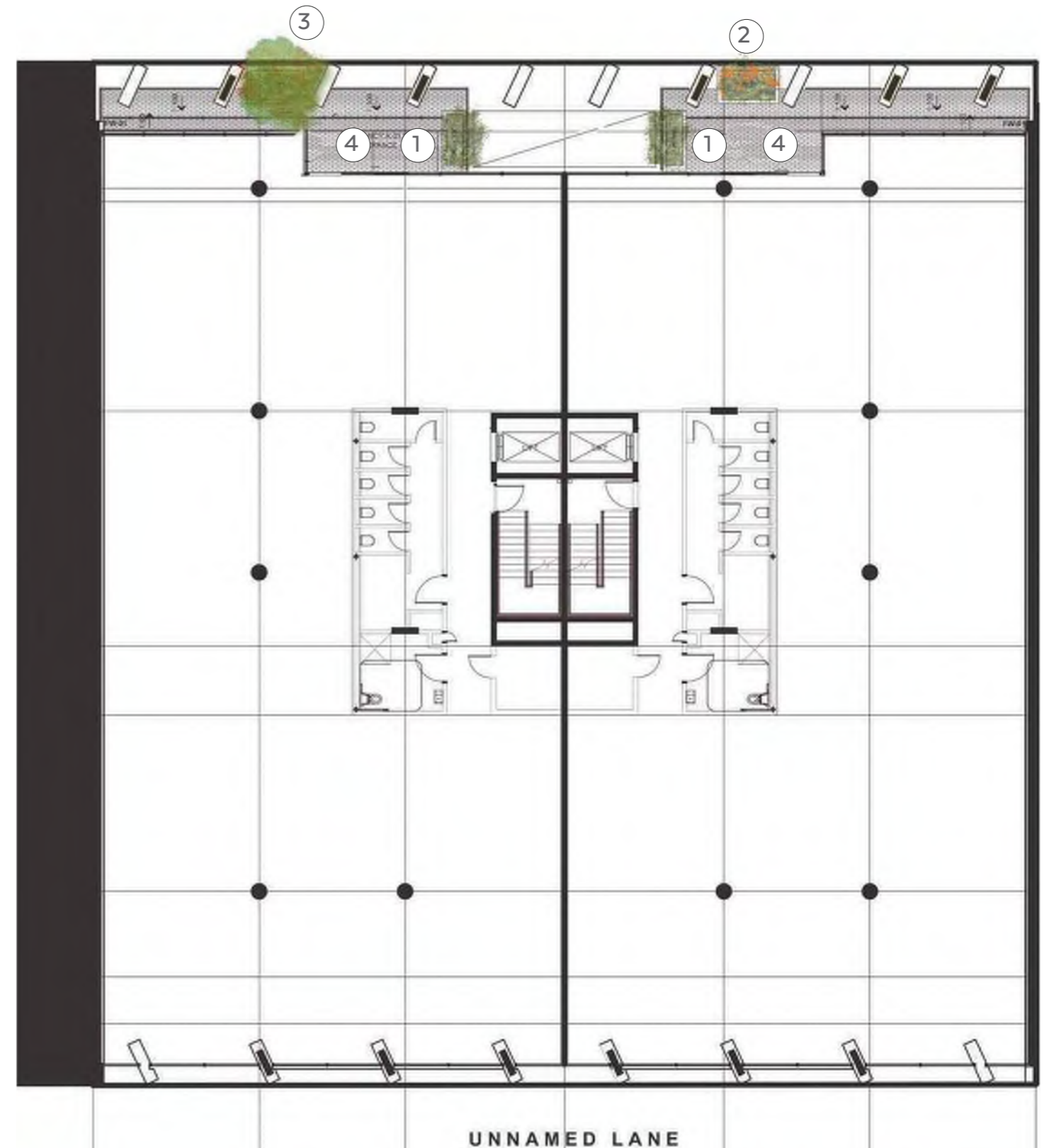


First floor plan

Level 01 1:200 @ A3

Legend

1. Internally facing lightweight planters, 1m tall to match balustrade datum. Plants selected to tolerate lower light conditions, however, generally the north facing position will allow for good quality sun, particularly in winter.
2. 1m tall lightweight planters with cascading plant species.
3. Generously sized lightweight tree planter. 1m tall at building edge to match balustrade. Soil volume is generally 2.1m³, suitable for a large shrub or small tree.
4. Break out garden space with external type paving/deck used to blur inside and outside transition.

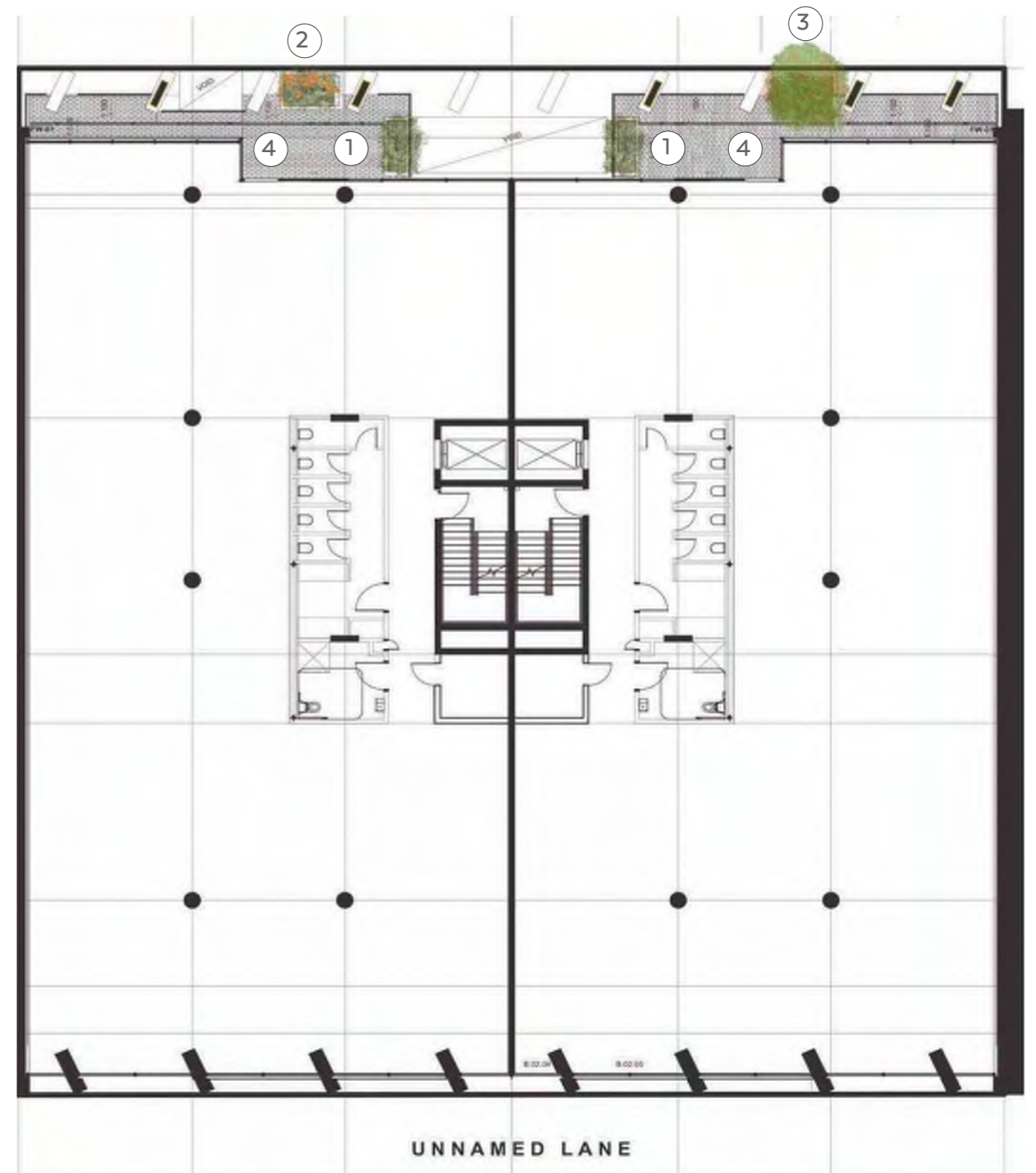


Second floor plan

Level 02 1:200 @ A3

Legend

1. Internally facing lightweight planters, 1m tall to match balustrade datum. Plants selected to tolerate lower light conditions, however, generally the north facing position will allow for good quality sun, particularly in winter.
2. 1m tall lightweight planters with cascading plant species.
3. Generously sized lightweight tree planter. 1m tall at building edge to match balustrade. Soil volume is generally 2.1m³ metres, suitable for a large shrub or small tree.
4. Break out garden space with external type paving/deck used to blur inside and outside transition.

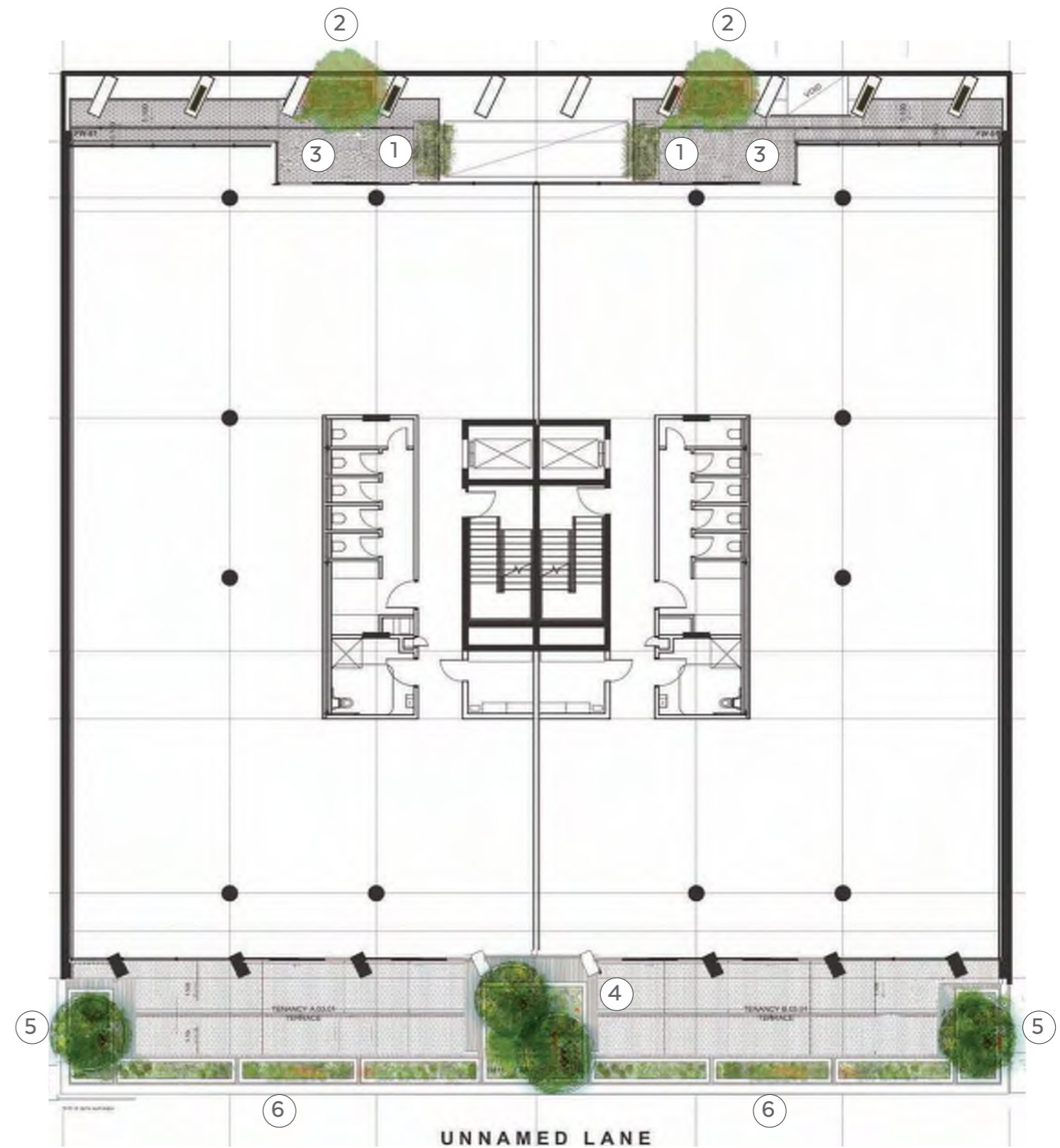


Third floor plan

Level 03 1:200 @ A3

Legend

1. Internally facing lightweight planters, 1m tall to match balustrade datum. Plants selected to tolerate lower light conditions, however, generally the north facing position will allow for good quality sun, particularly in winter.
2. Generously sized lightweight tree planter. 1m tall at building edge to match balustrade. Soil volume is generally 2.1m³, suitable for a large shrub or small tree.
3. Break out garden space with external type paving/deck used to blur inside and outside transition.
4. Large 12m³ lightweight planter for tree planting on southern façade. 1m tall to act as balustrade. This large planter also separates the terrace space to provide more options for tenant use.
5. Large 3.9m³ planters on eastern and western edges of rear terrace.
6. Linear planters 1m tall along terrace edge to act as balustrades.

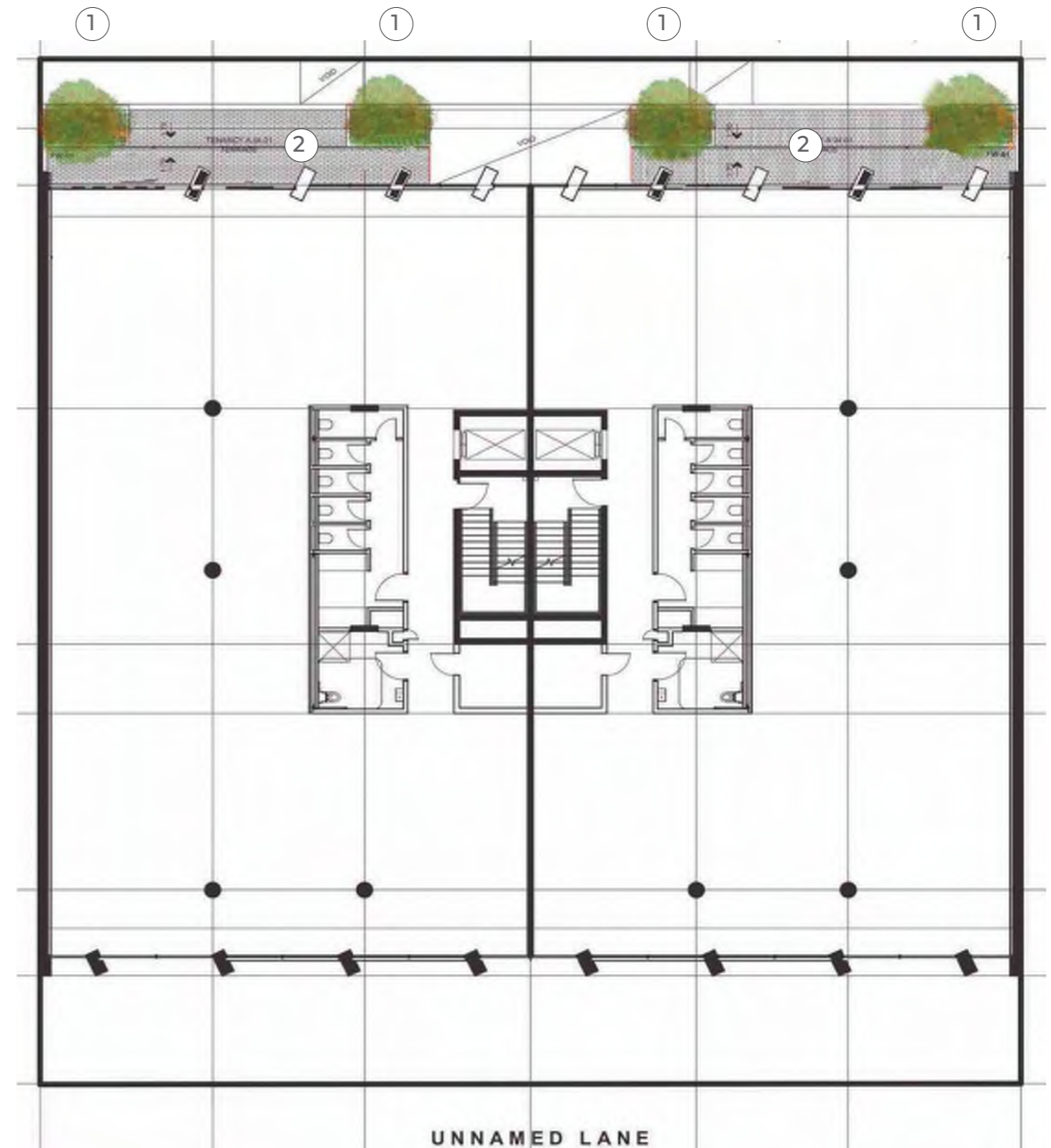


Fourth floor plan

Level 04 1:200 @ A3

Legend

1. Generously sized lightweight tree planter to north. 1m tall at building edge to match balustrade. Soil volume is generally 2.1m³ metres, suitable for a large shrub or small tree.
2. Break out garden space with external type paving/deck used to blur inside and outside transition.

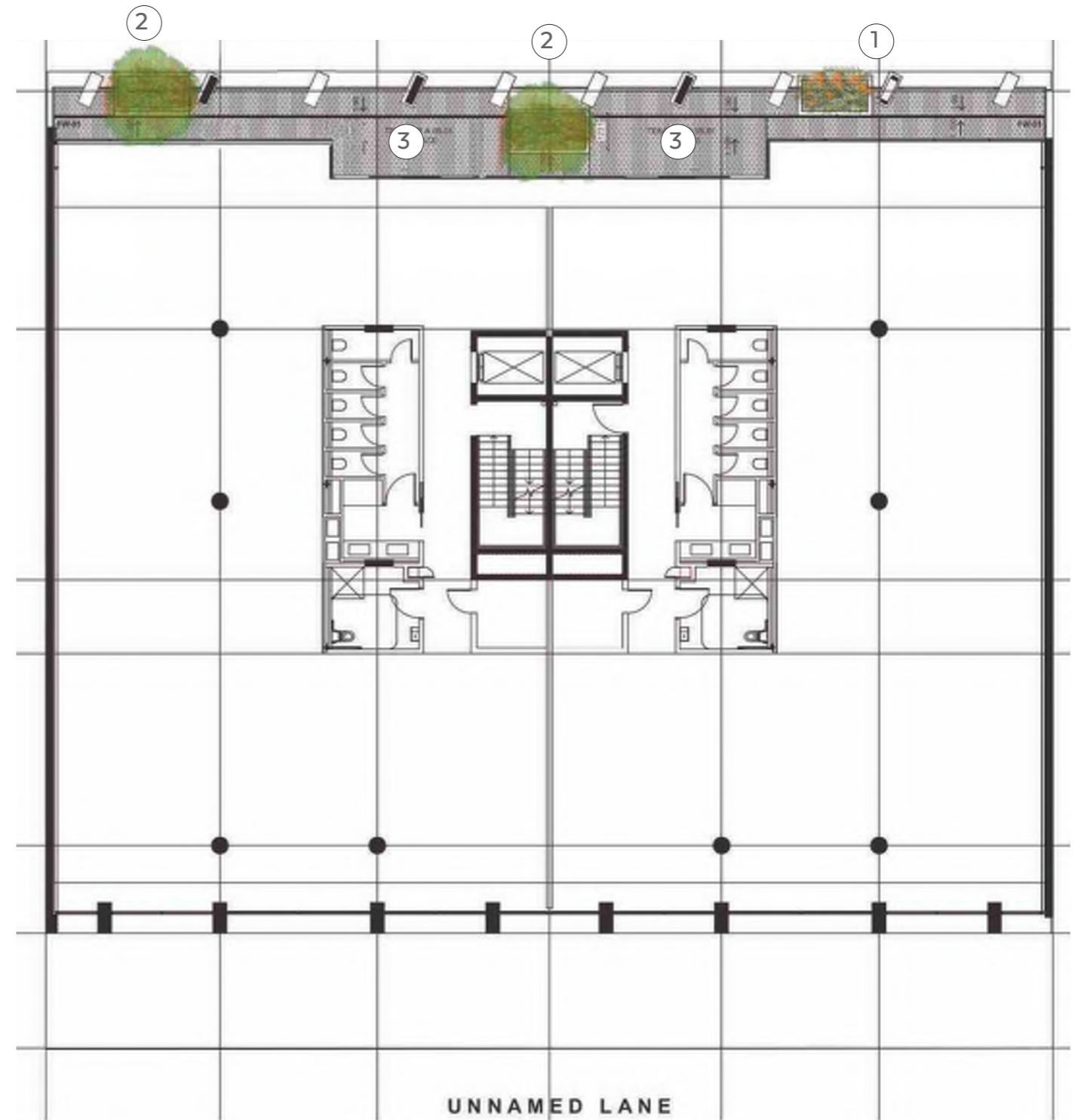


Fifth floor plan

Level 05 1:200 @ A3

Legend

1. 1m tall lightweight planters with cascading plant species.
2. Generously sized lightweight tree planter to the north. 1m tall at building edge to match balustrade. Soil volume is generally 2.1m³ metres, suitable for a large shrub or small tree.
3. Break out garden space with external type paving/deck used to blur inside and outside transition.

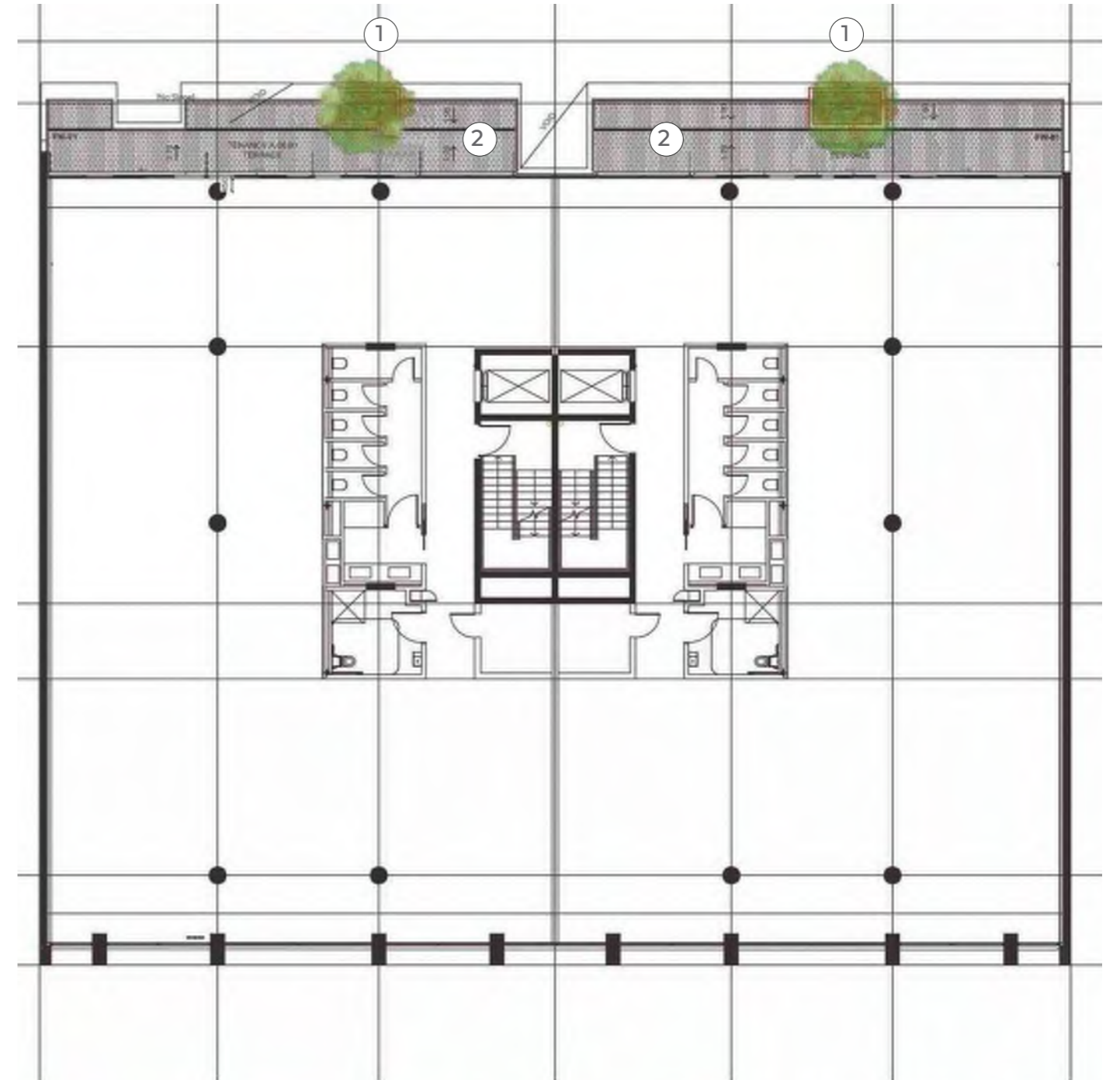


Sixth floor plan

Level 06 1:200 @ A3

Legend

1. Generously sized lightweight tree planter to north. 1m tall at building edge to match balustrade. Soil volume is generally 2.1m³ metres, suitable for a large shrub or small tree.
2. Break out garden space with external type paving/deck used to blur inside and outside transition.

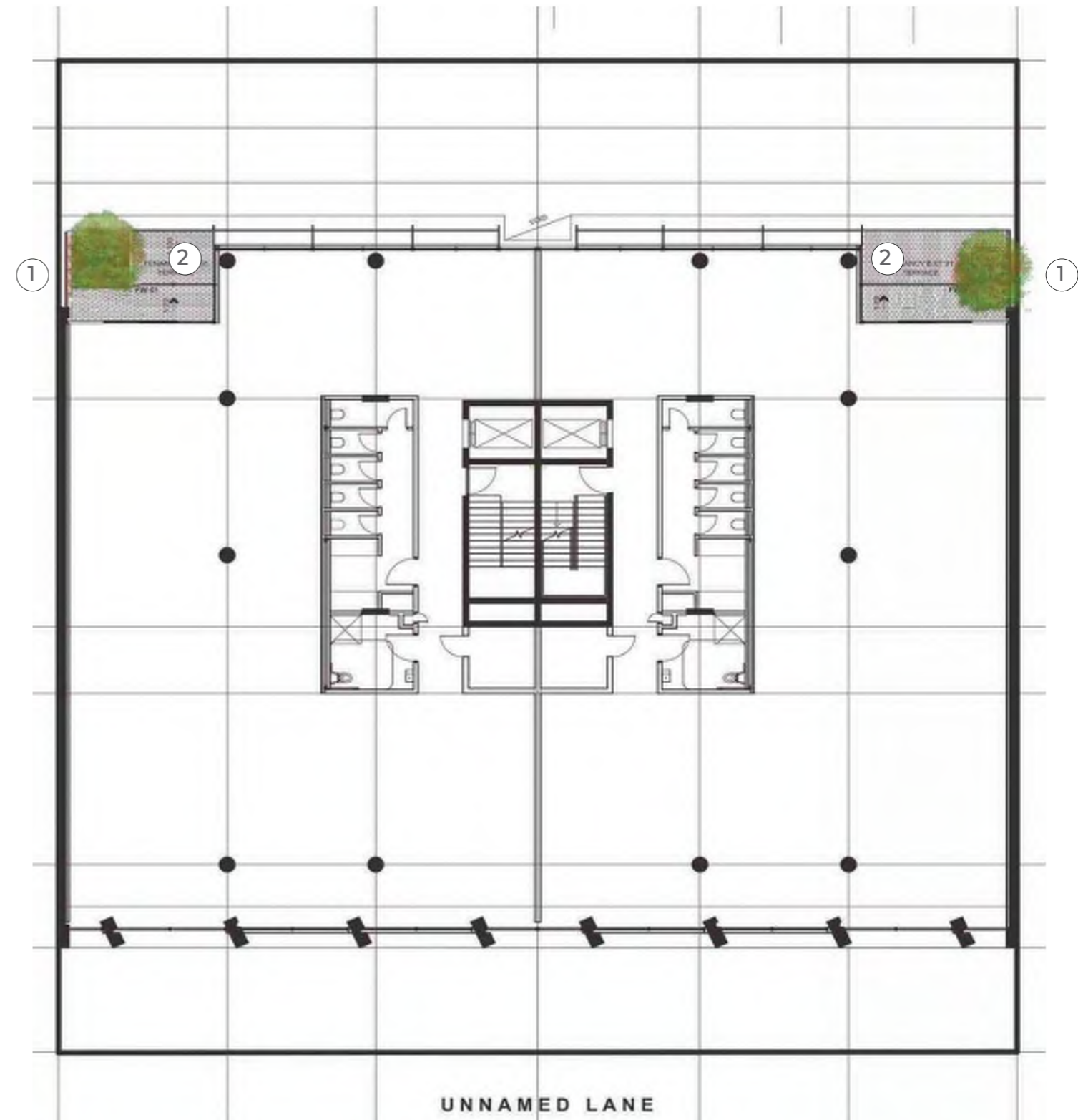


Seventh floor plan

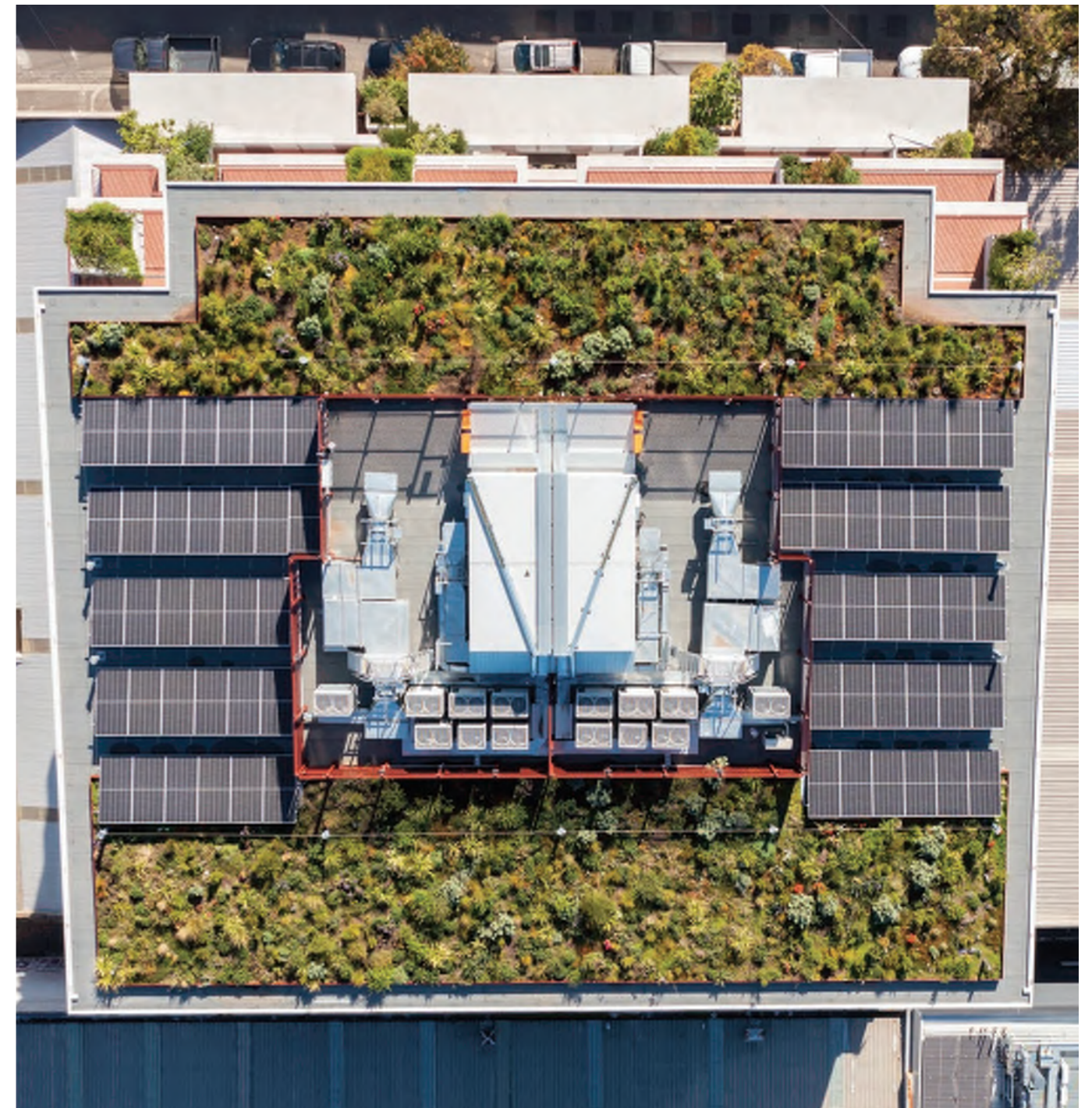
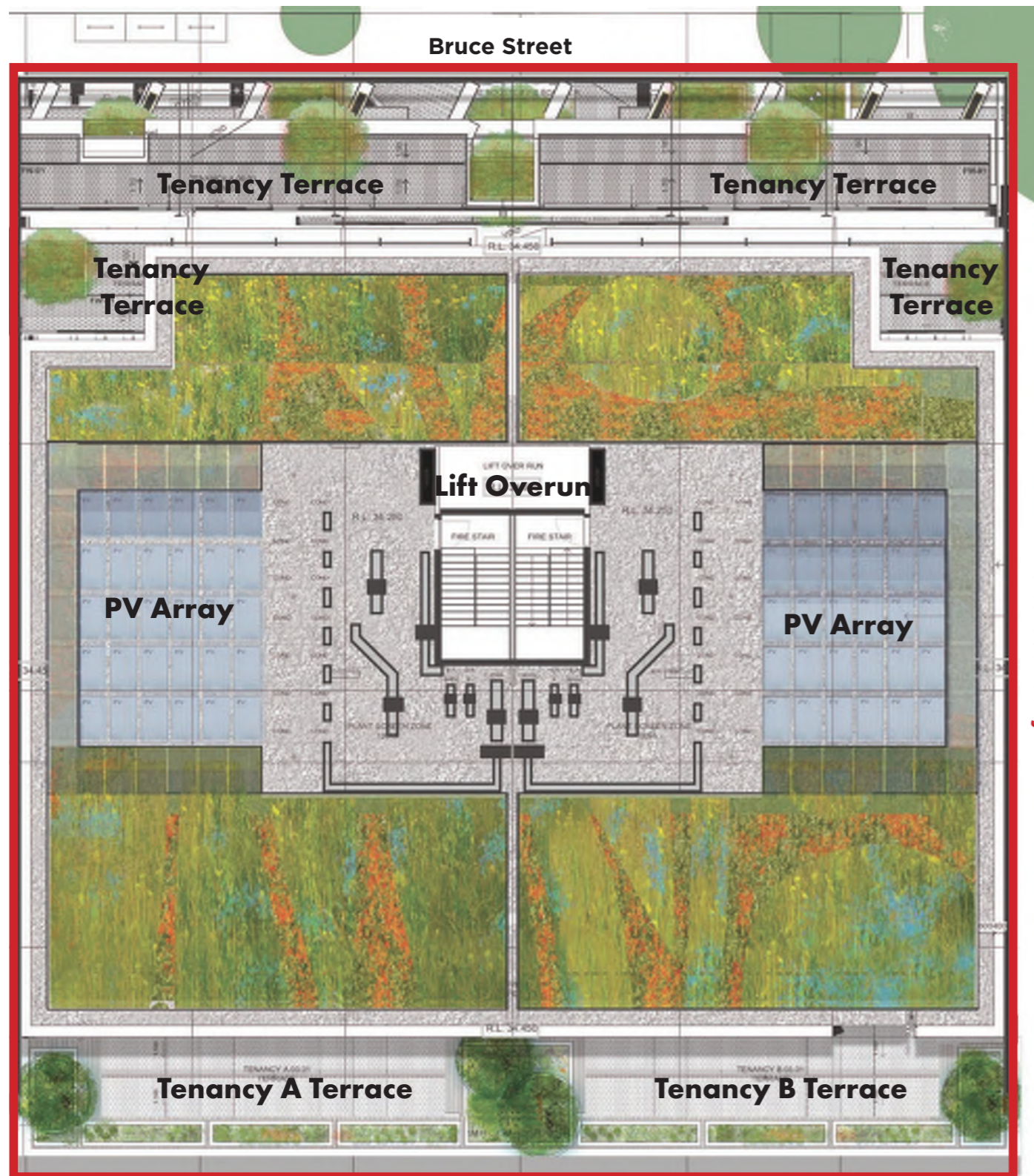
Level 07 1:200 @ A3

Legend

1. Generously sized lightweight tree planter to the north. 1m tall at building edge to match balustrade. Soil volume is generally 2.1m³ metres, suitable for a large shrub or small tree.
2. Break out garden space with external type paving/deck used to blur inside and outside transition.



Roof plan and detail aerial photo



As-Built Aerial Note the larger area for solar pv array

Elevations



North Elevation 1:200 @ A3

Legend

- 1. *Tristaniopsis laurina* 'Luscious'
- 2. *Acmena smithii* 'Red head'
- 3. *Eleocarpus reticulatus*



West Elevation 1:200 @ A3

Elevations



East Elevation 1:200 @ A3

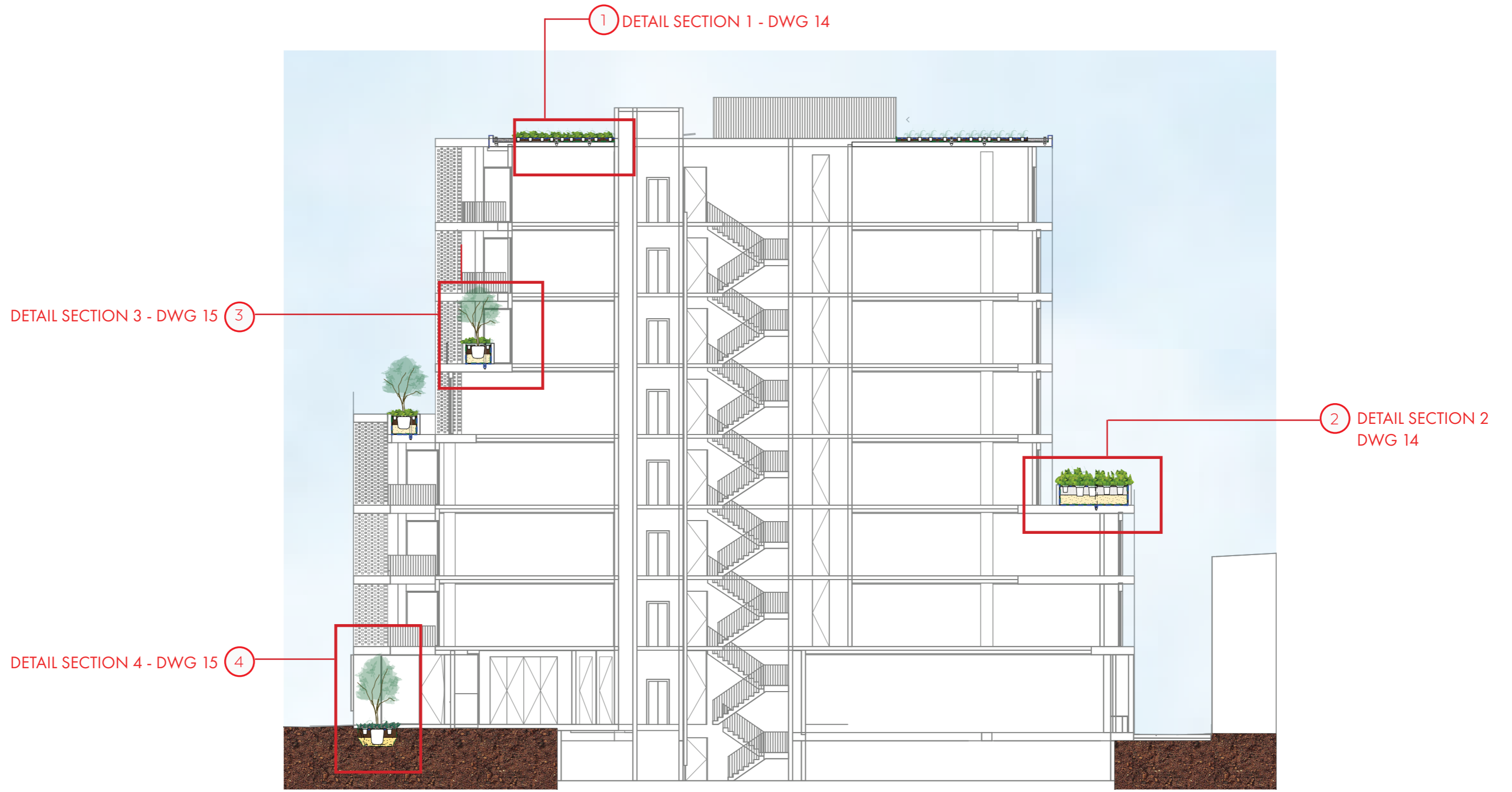
Legend

- 1. *Tristaniopsis laurina* 'Luscious'
- 2. *Acmena smithii* 'Red head'
- 3. *Eleocarpus reticulatus*



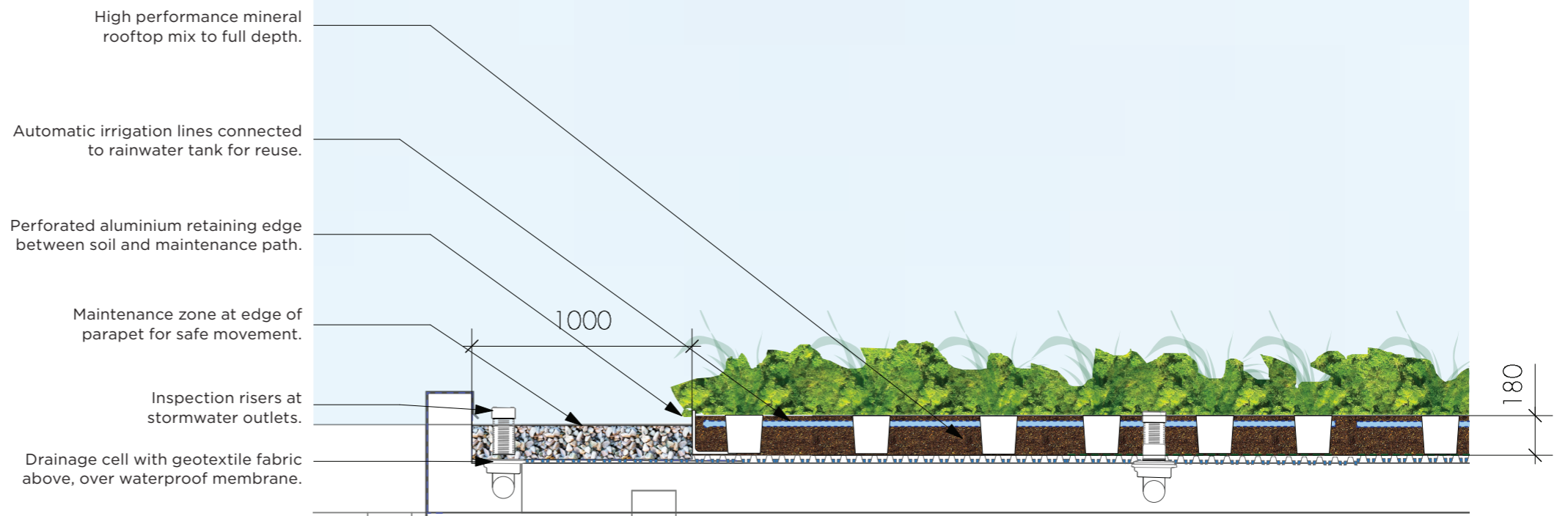
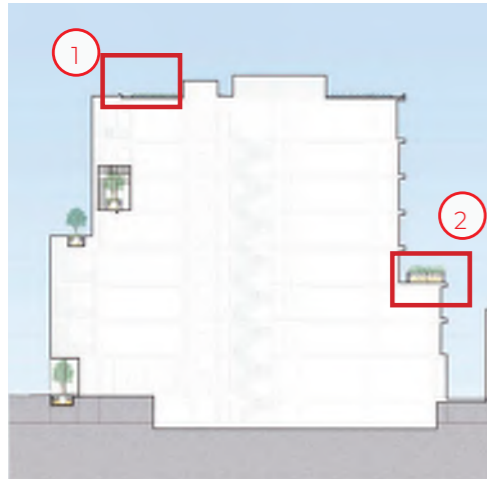
South Elevation 1:200 @ A3

Section A

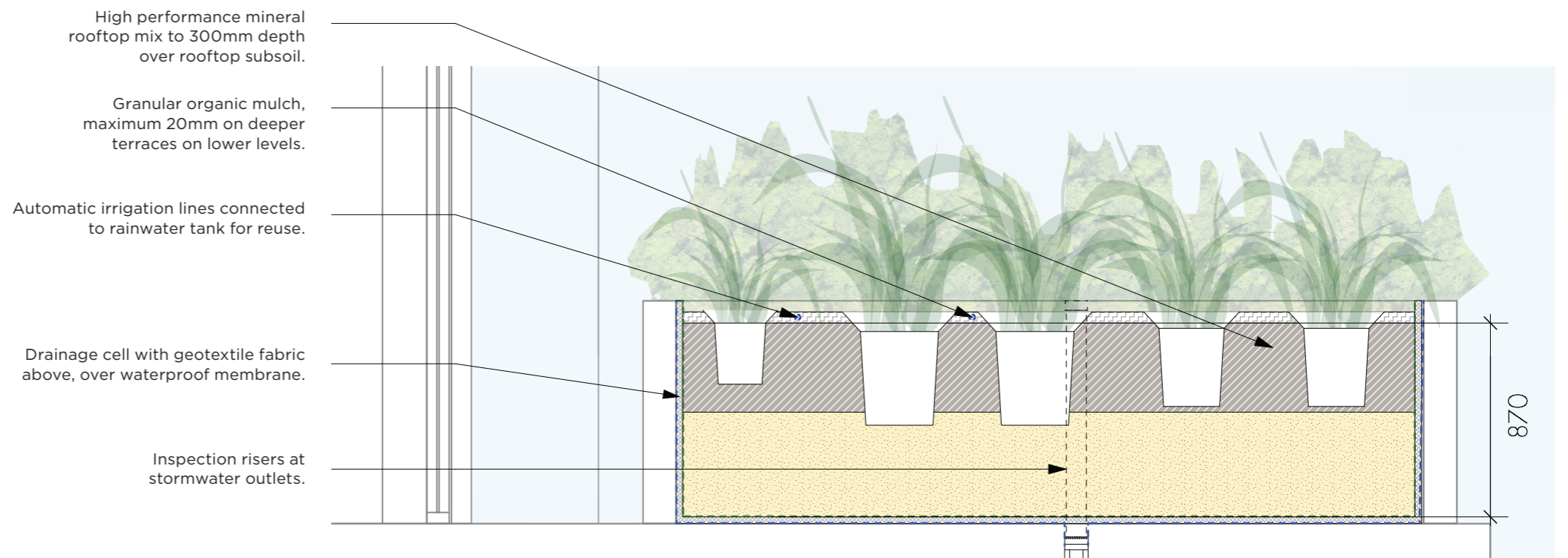


Section A 1:200 @ A3

Detail sections

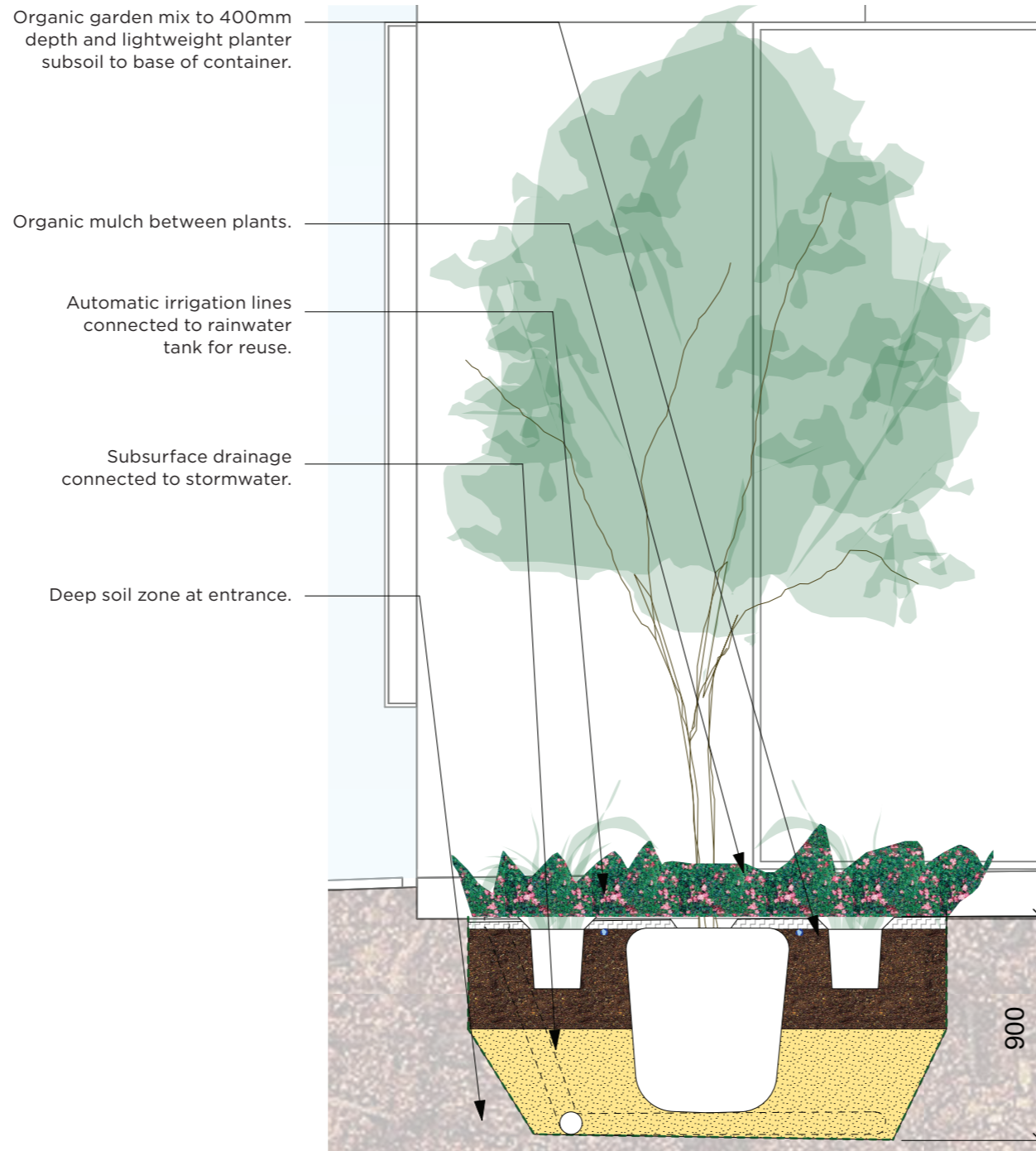
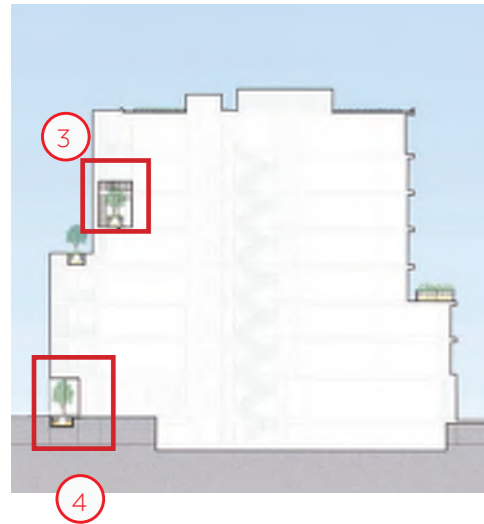


1. Extensive rooftop planting 1:25 @ A3

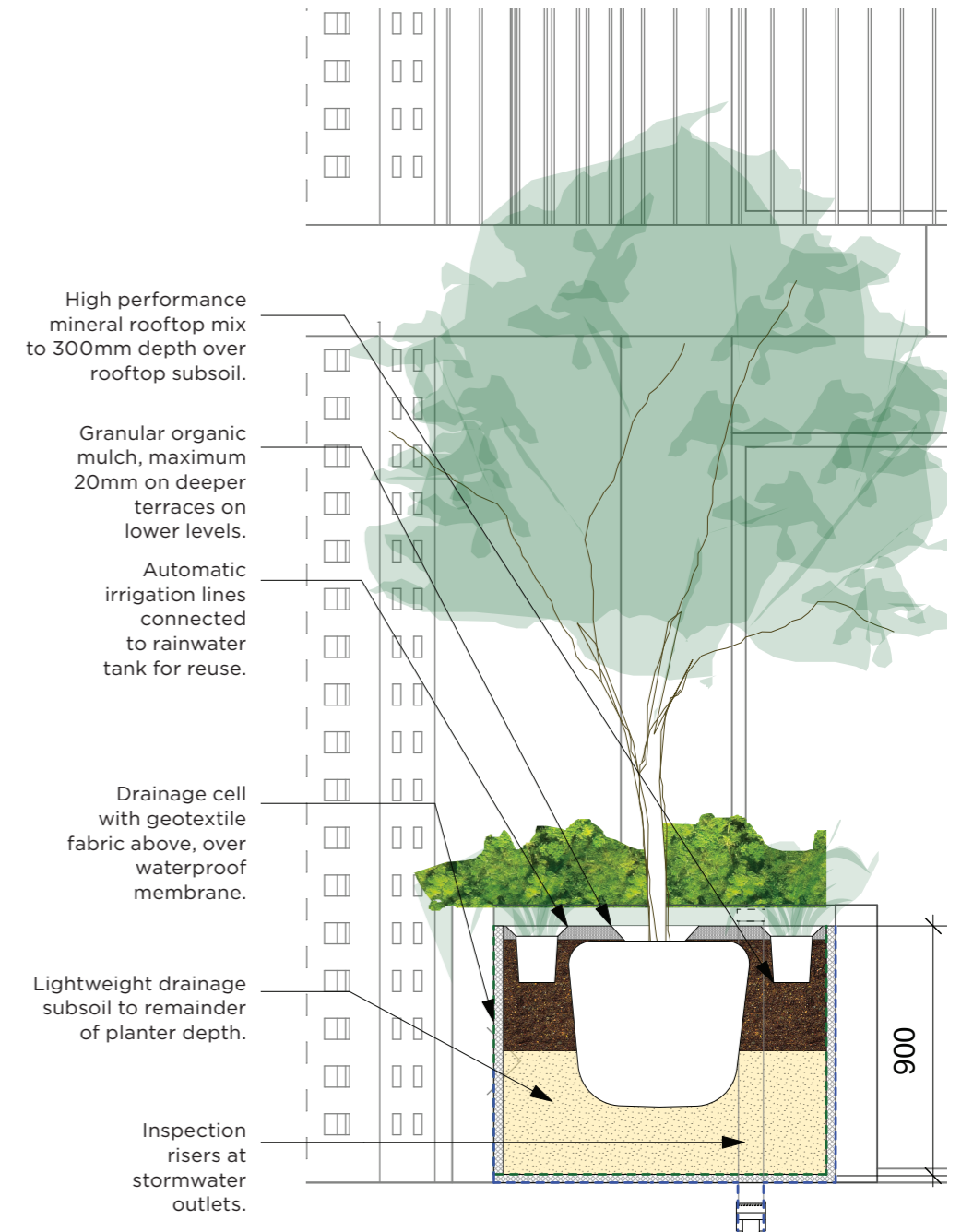


2. Level 3 Terrace 1:25 @ A3

Detail sections

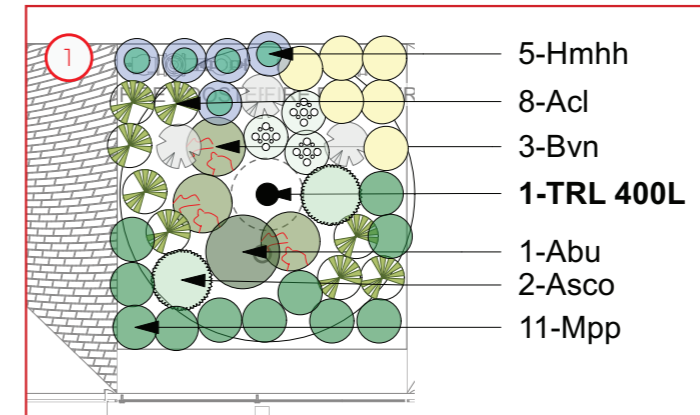
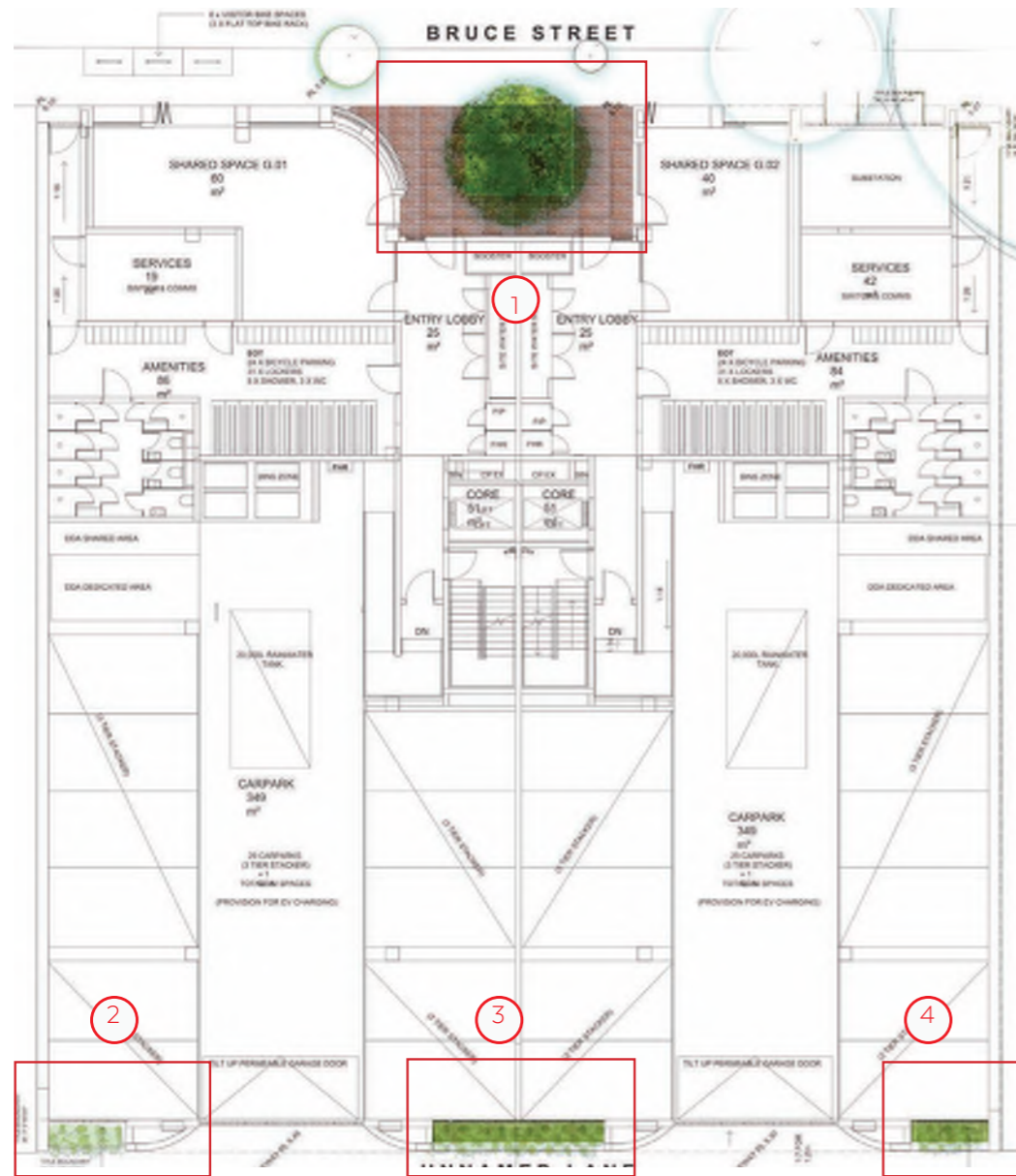


3. Northern Entrance 1:25 @ A3

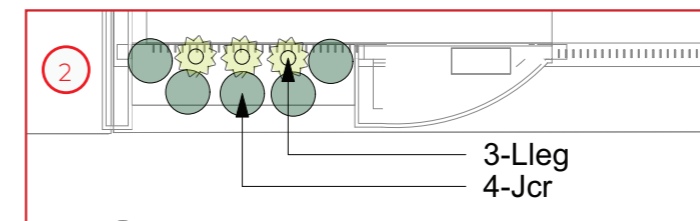


4. Northern Terrace Level 4 1:25 @ A3

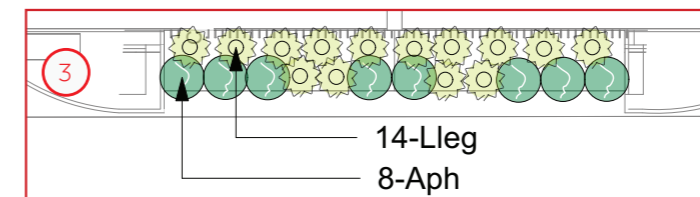
Planting plan and Green Factor tool table - Ground floor



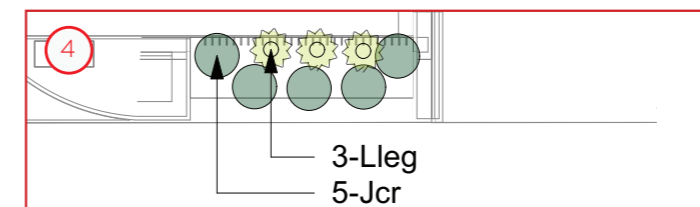
1. Planting plan - Ground floor 1:75 @ A3



2. Planting plan - Ground floor 1:75 @ A3



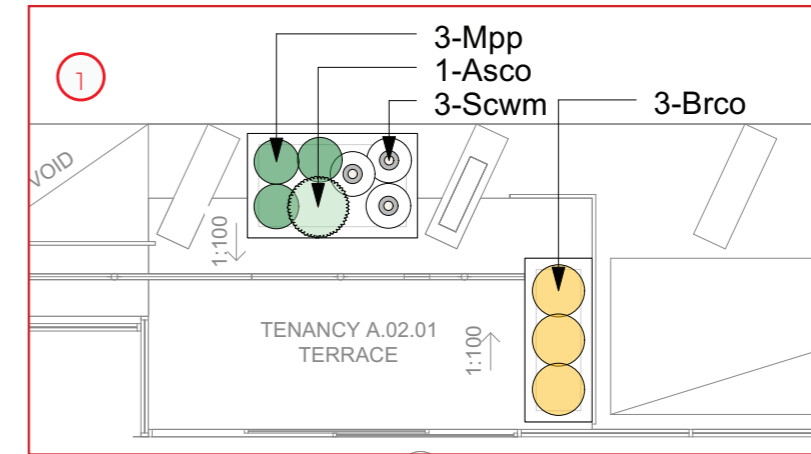
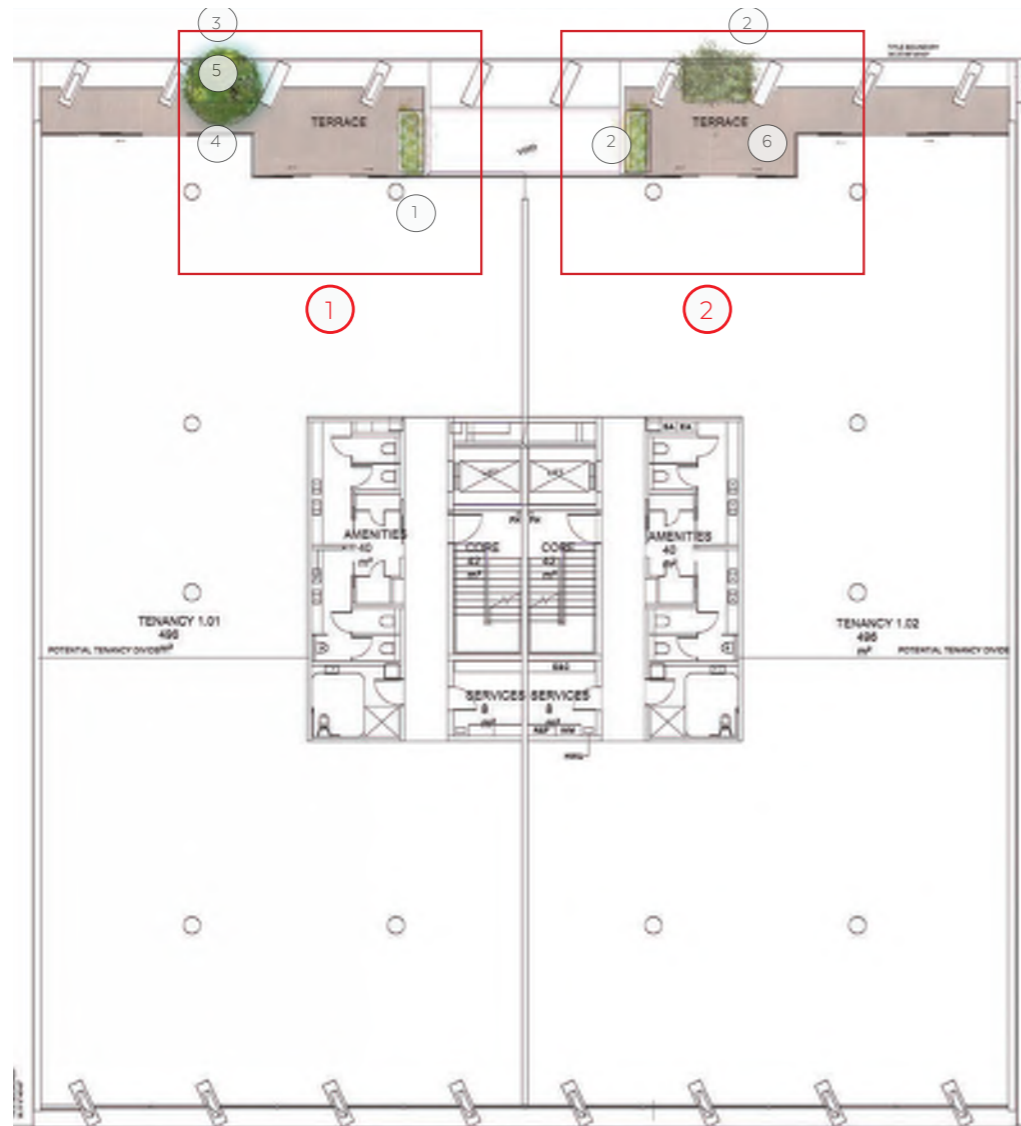
3. Planting plan - Ground floor 1:75 @ A3



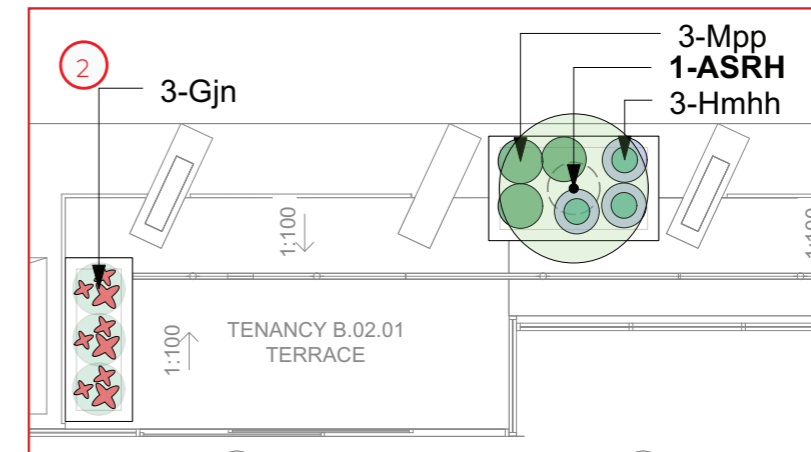
4. Planting plan - Ground floor 1:75@ A3

Ground Floor South		
Native GC	52	3.2
Exotic GC	49	3.0
Exotic Small shru	12	0.7
	113	
Garden area	7 m2	
Ground Floor North		
Indigenous GC	39	3.1
Indigenous SS	31	2.4
Native GC	36	2.8
Native SS	34	2.7
Total	140	
Garden area	11 m2	

Planting plan and Green Factor tool table - Level 1



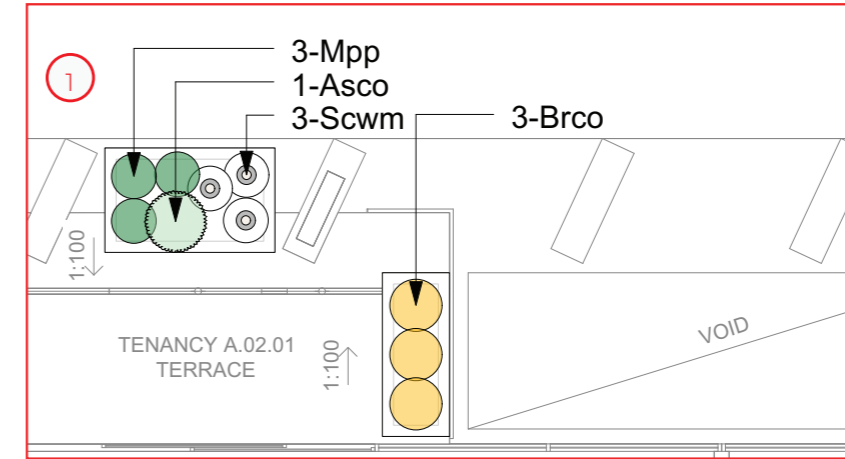
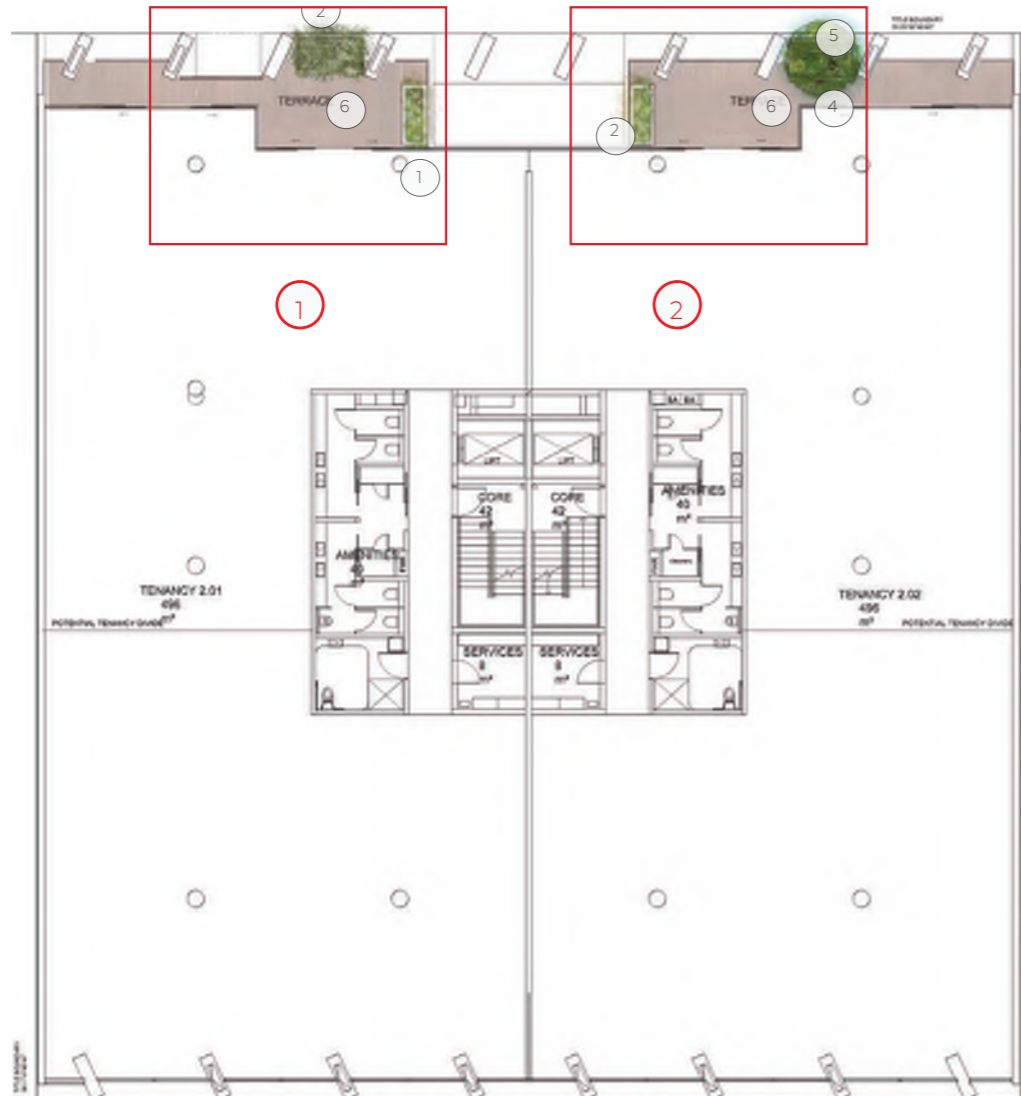
1. Planting plan - Level 01 1:75@ A3



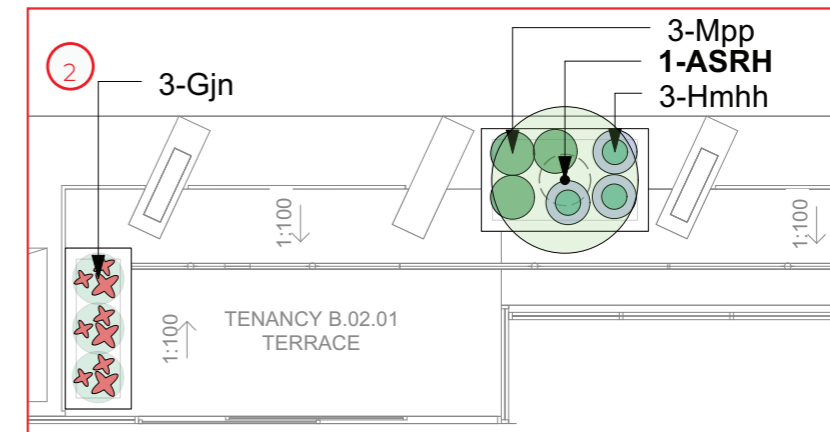
2. Planting plan - Level 01 1:75 @ A3

Level 1		
Indigenous GC	27	5.1
Indigenous SS	6	1.1
Native GC	4	0.8
Native SS	0	0.0
Total	37	
Garden area	7 m2	

Planting plan and Green Factor tool table - Level 2



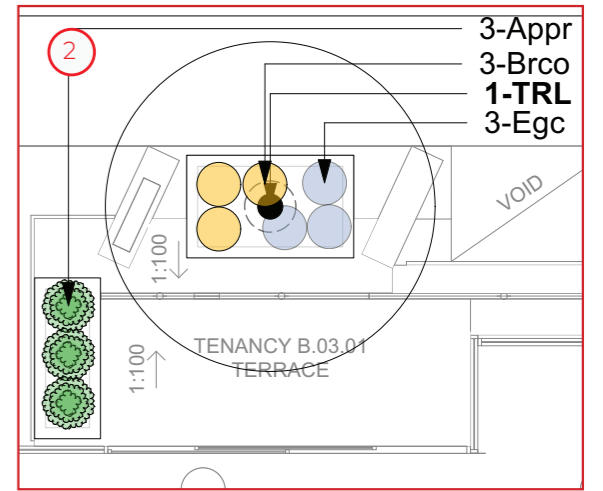
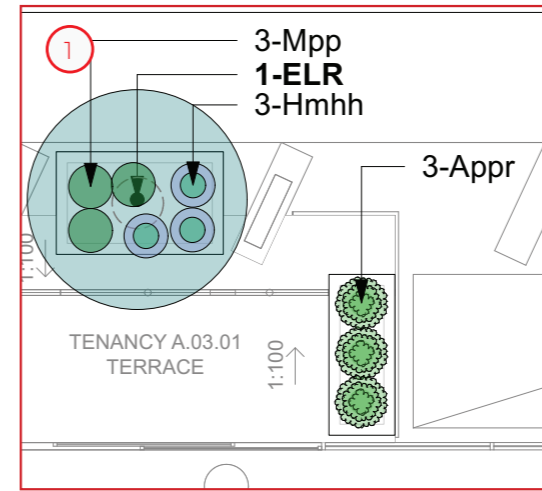
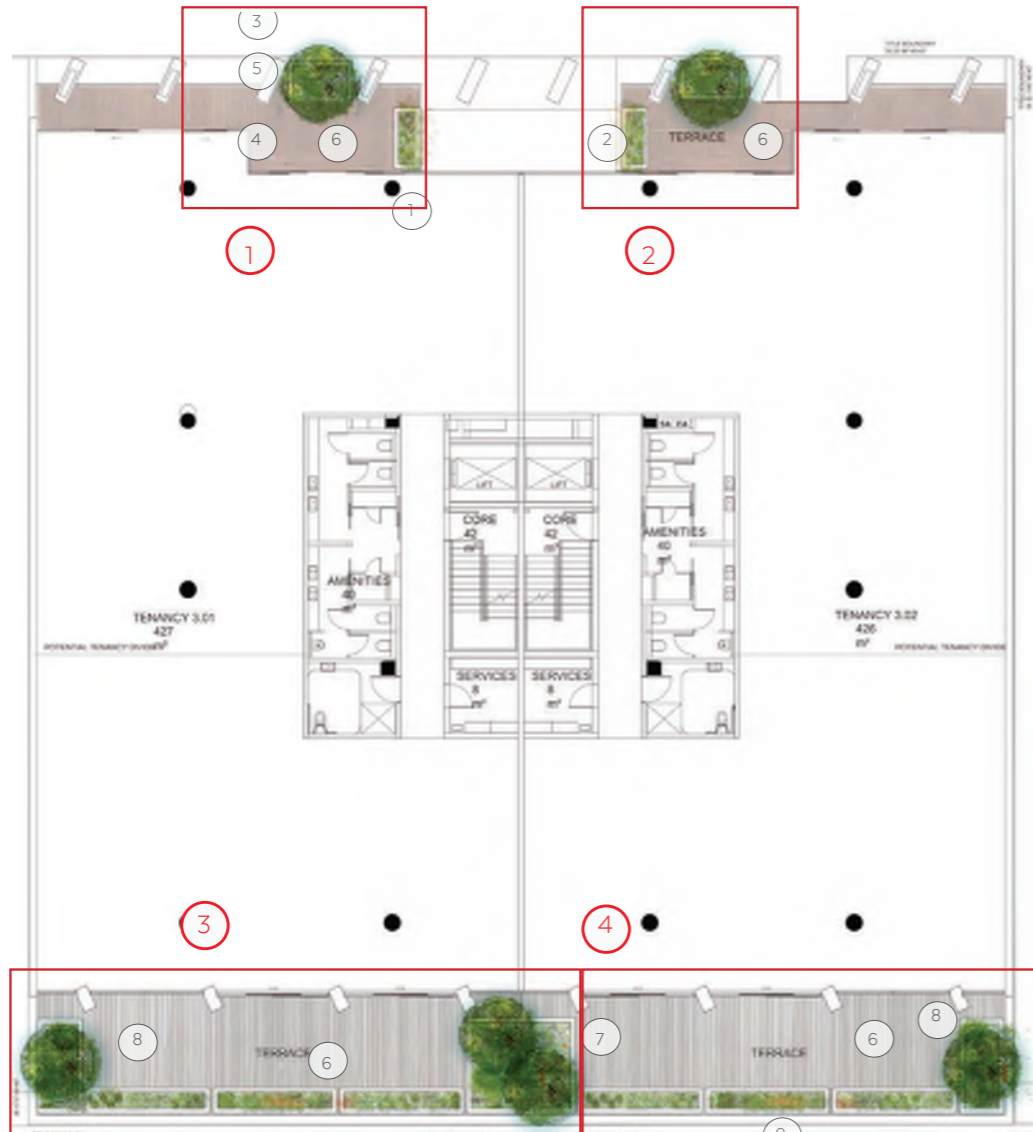
1. Planting plan - Level O2 1:75 @ A3



2. Planting plan - Level O2 1:75 @ A3

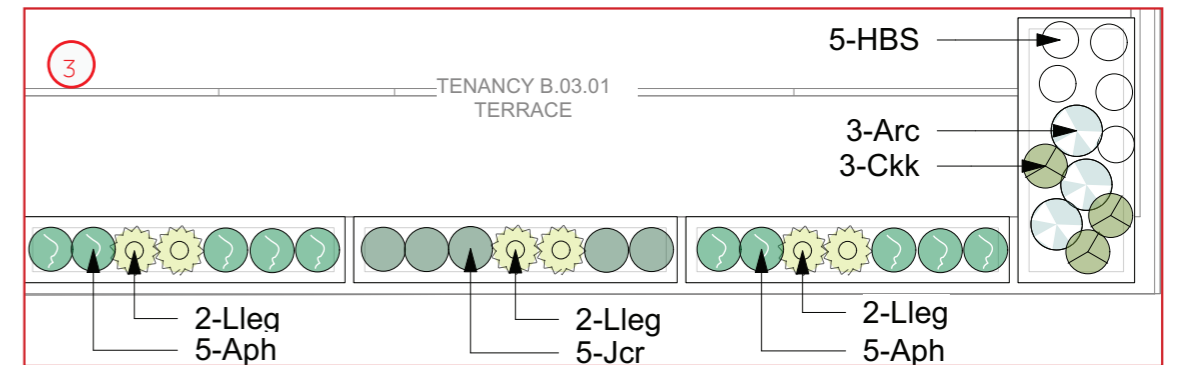
Level 2		
Indigenous GC	15	5.5
Indigenous SS	4	1.5
Native GC	0	0.0
Native SS	0	0.0
Total	19	
Garden area	7 m2	

Planting plan and Green Factor tool table - Level 3

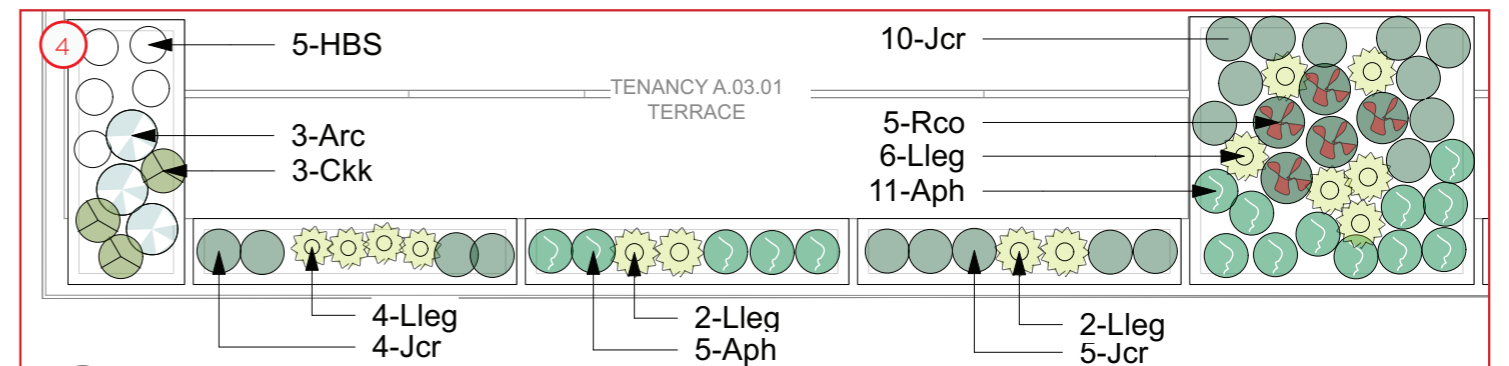


1. Planting plan - Level 03 1:75 @ A3

2. Planting plan - Level 03 1:75 @ A3



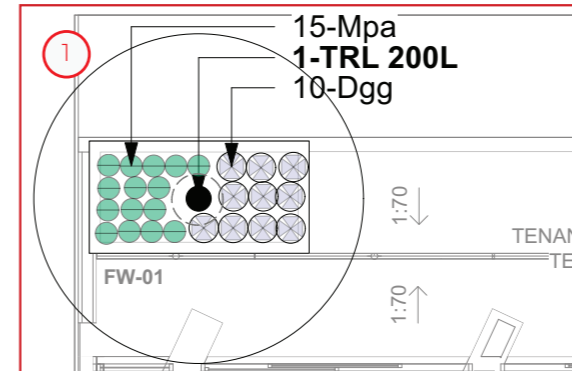
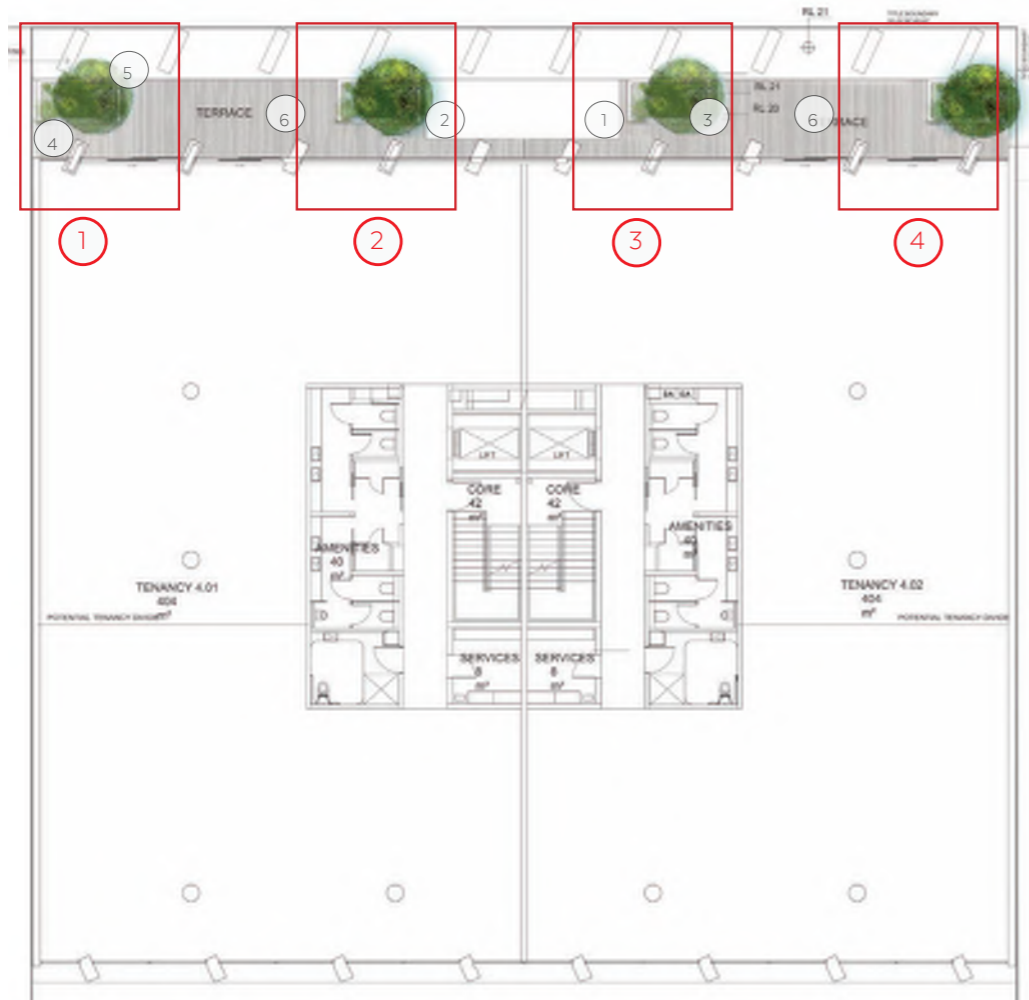
3. Planting plan - Level 03 1:75 @ A3



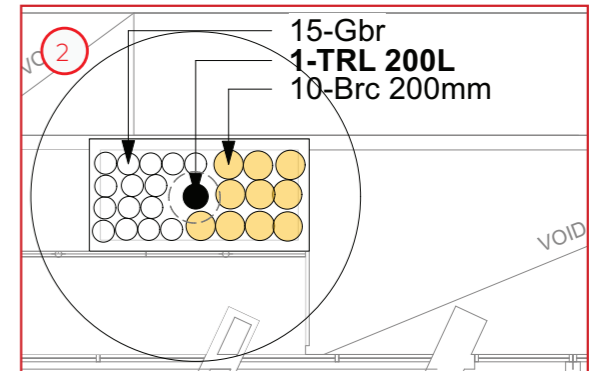
4. Planting plan - Level 03 1:75 @ A3

Level 3		
Indigenous GC	17	6.4
Indigenous SS	29	10.8
Native GC	32	12.0
Native SS	0	0.0
Exotic GC	14	5.2
Exotic SS	7	2.6
Total	99	
Garden area	37 m2	

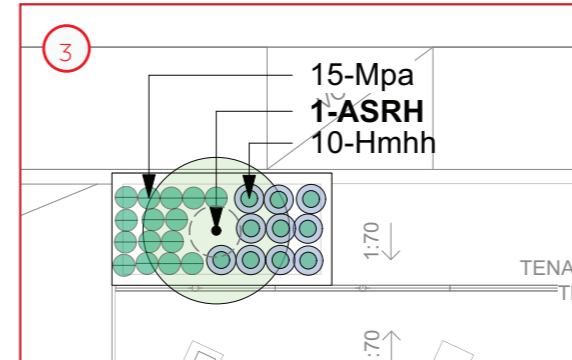
Planting plan and Green Factor tool table - Level 4



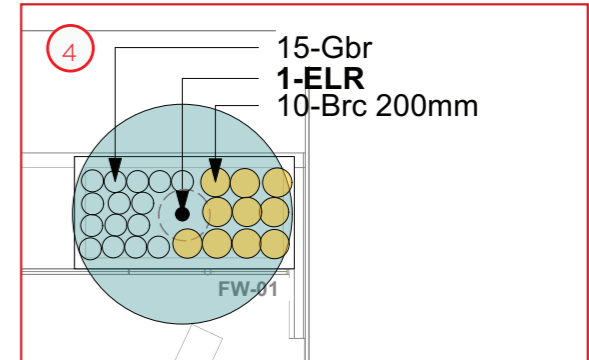
1. Planting plan - Level 04 1:75 @ A3



2. Planting plan - Level 04 1:75 @ A3



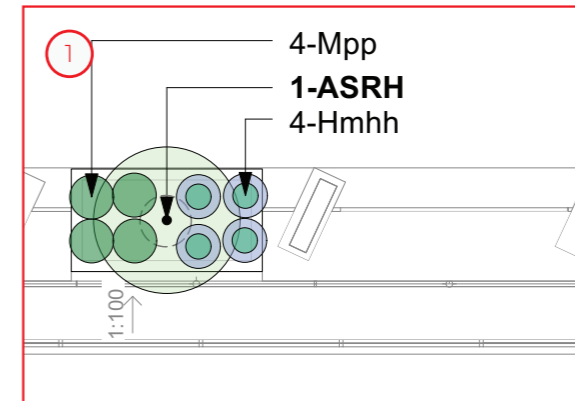
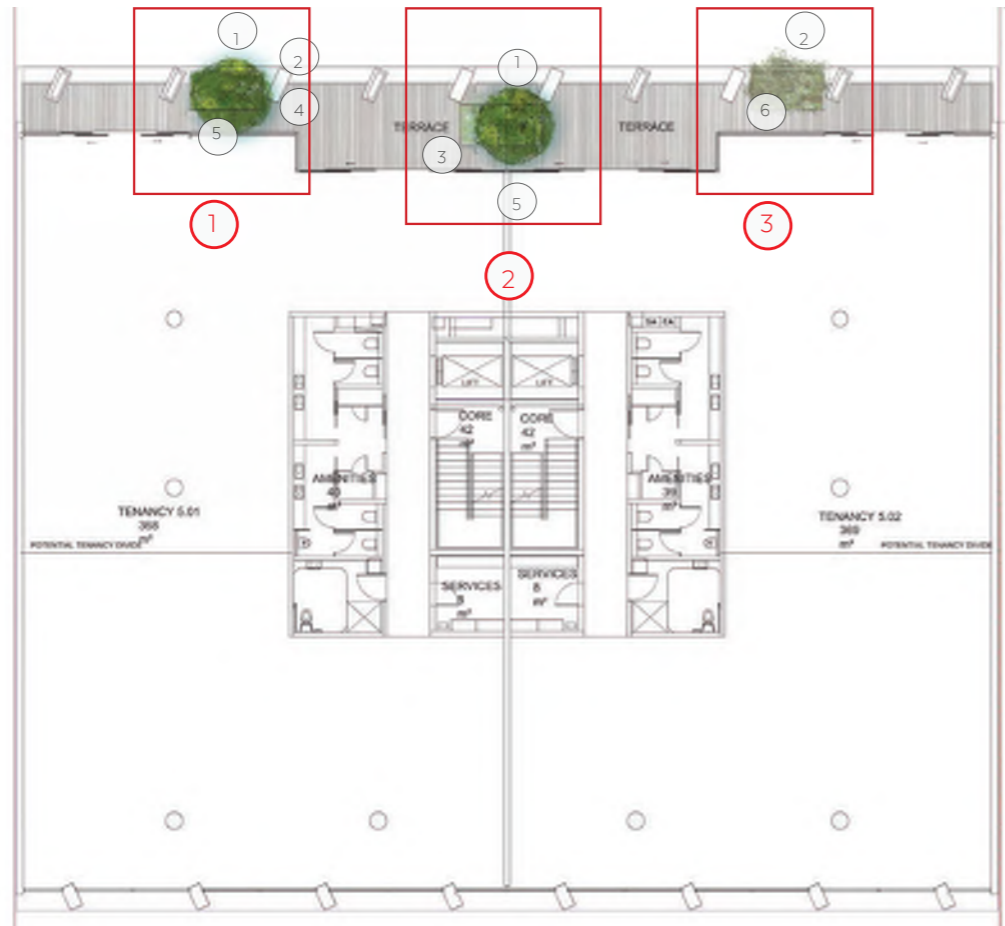
3. Planting plan - Level 04 1:75 @ A3



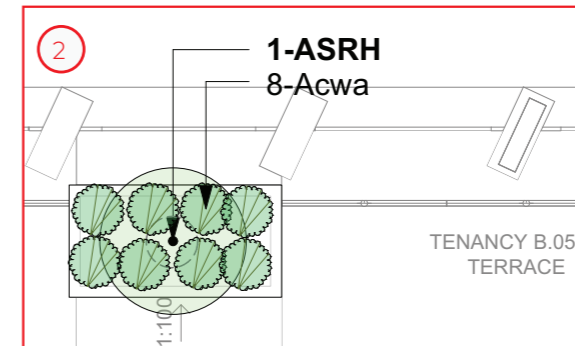
4. Planting plan - Level 04 1:75 @ A3

Level 4		
Indigenous GC	100	10.0
Indigenous SS	0	0.0
Native GC	0	0.0
Native SS	0	0.0
Total	100	
Garden area	10 m2	

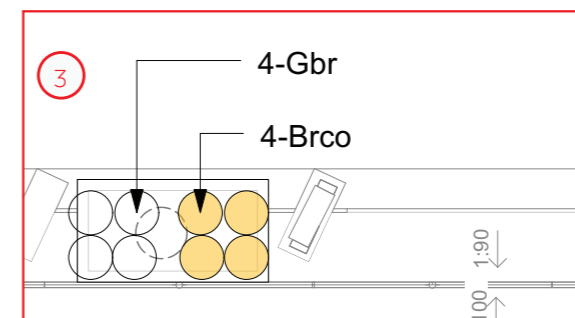
Planting plan and Green Factor tool table - Level 5



1. Planting plan - Level 05 1:75 @ A3



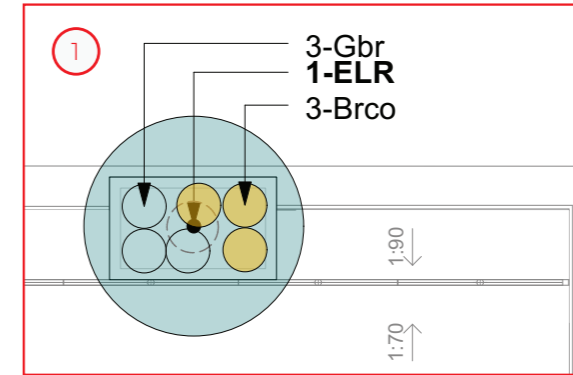
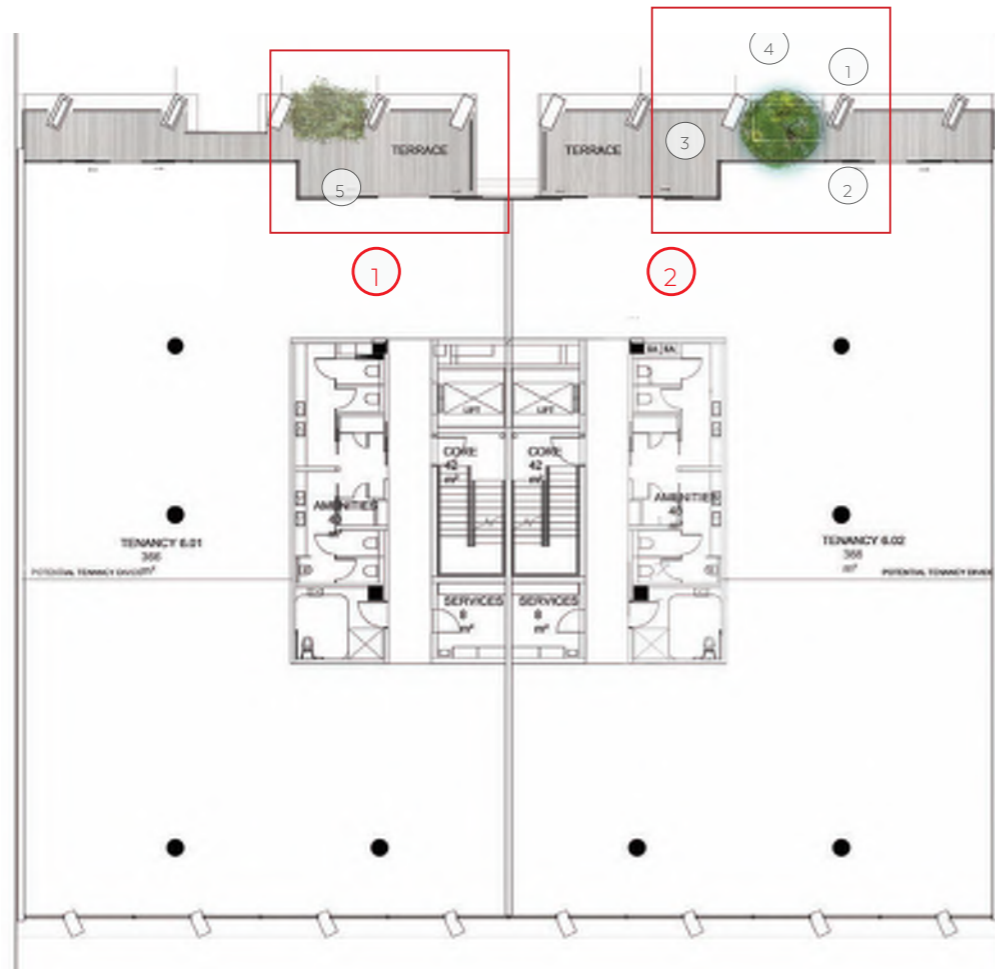
2. Planting plan - Level 05 1:75 @ A3



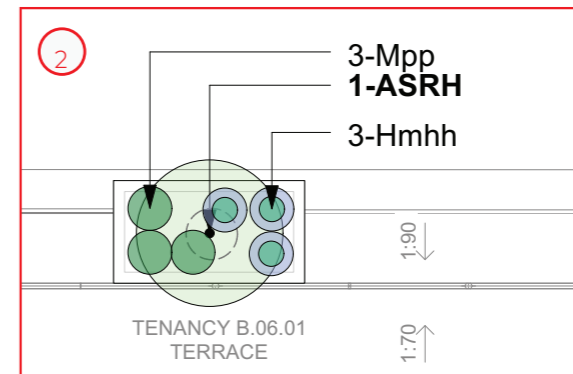
3. Planting plan - Level 05 1:75 @ A3

Level 5		
Indigenous GC	24	8.0
Indigenous SS	0	0.0
Native GC	0	0.0
Native SS	0	0.0
Total	24	
Garden area	8 m2	

Planting plan and Green Factor tool table - Level 6



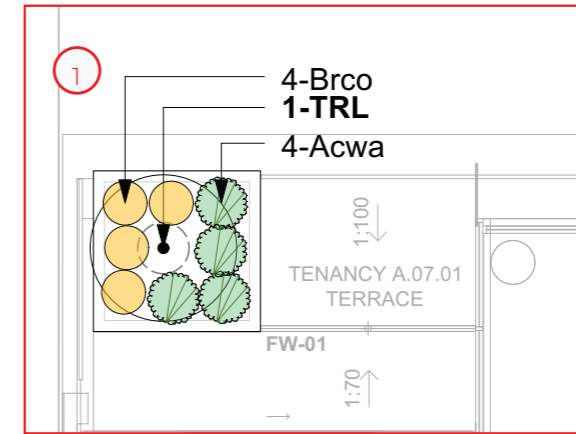
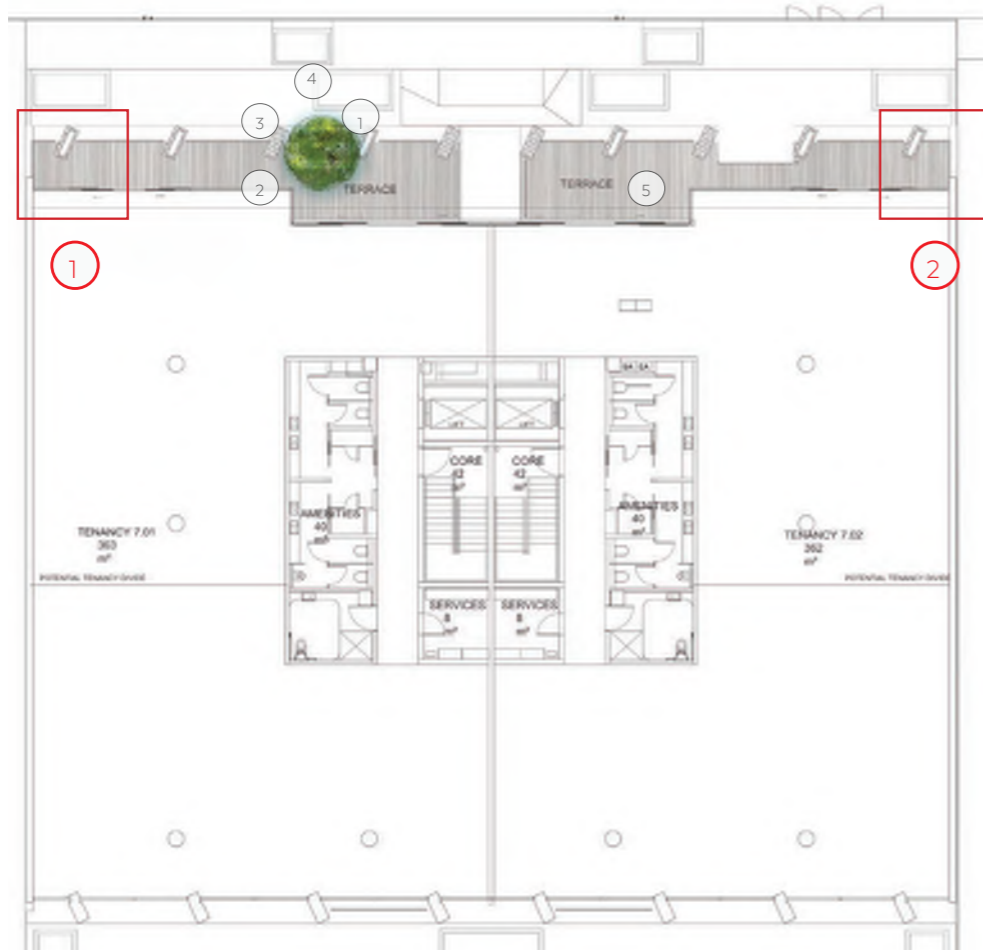
1. Planting plan - Level 06 1:75 @ A3



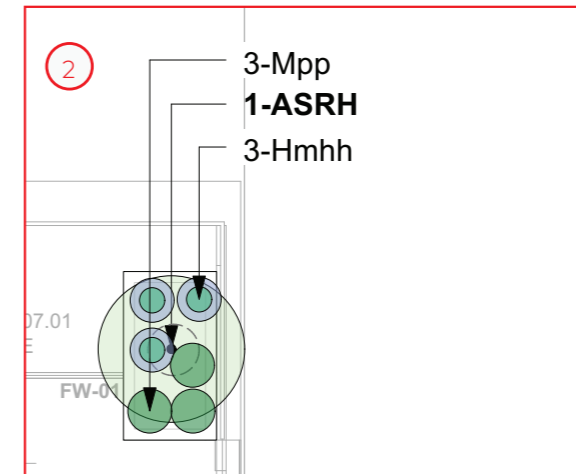
2. Planting plan - Level 06 1:75 @ A3

Level 6		
Indigenous GC	12	5.0
Indigenous SS	0	0.0
Native GC	0	0.0
Native SS	0	0.0
Total	12	
Garden area	5 m2	

Planting plan and Green Factor tool table - Level 7



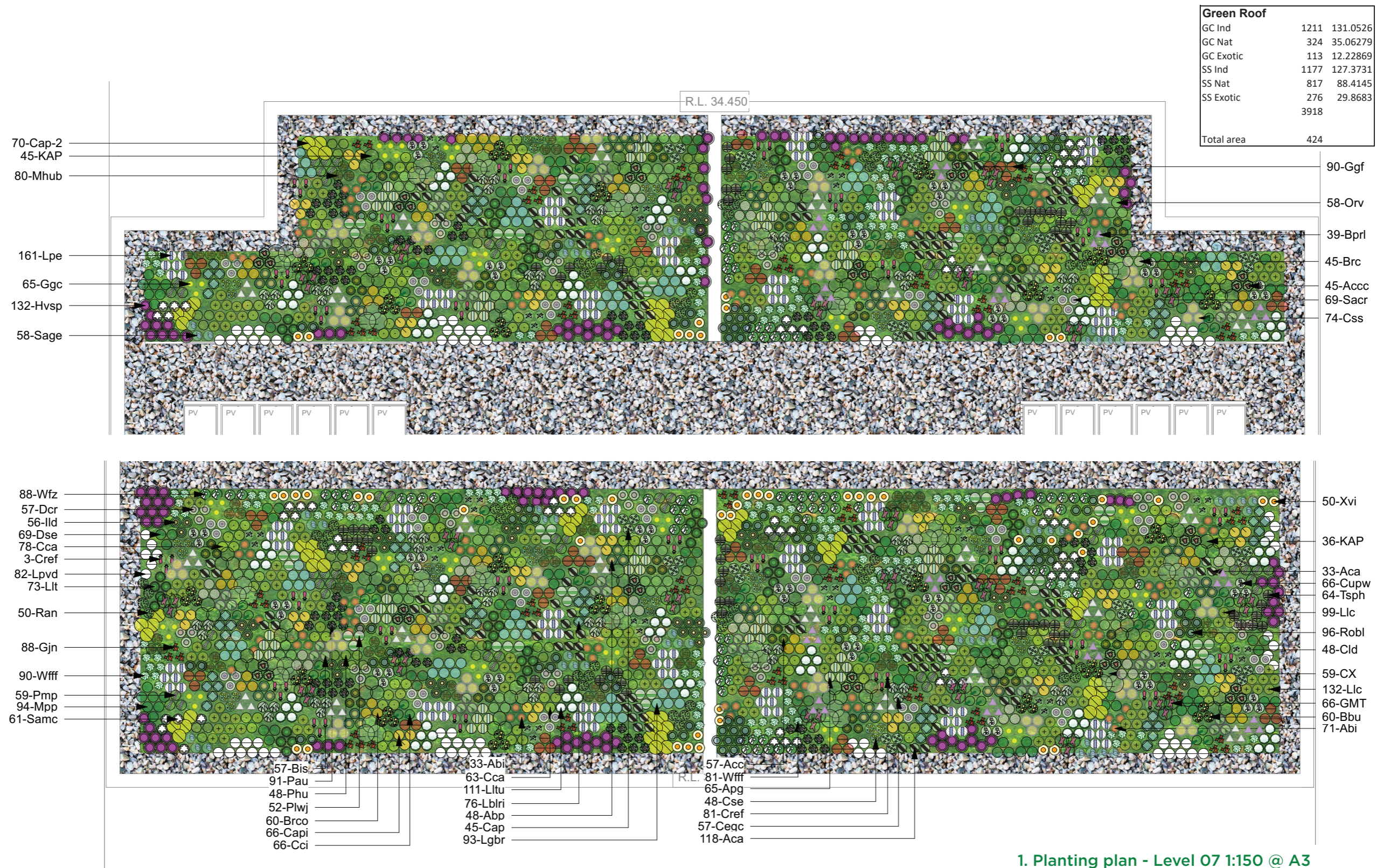
1. Planting plan - Level 07 1:1:75 @ A3



2. Planting plan - Level 07 1:75 @ A3

Level 7		
Indigenous GC	14	3.0
Indigenous SS	0	0.0
Native GC	0	0.0
Native SS	0	0.0
Total	14	
Garden area		3 m2

Planting plan and Green Factor tool table - Rooftop



1. Planting plan - Level 07 1:150 @ A3

Plant report

Trees and tall shrubs



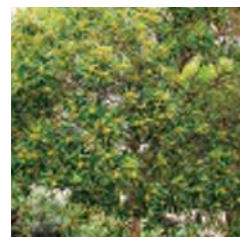
Code: ASRH
Botanical Name:
Acmena smithii 'Red head'
Common Name:
 Lilly Pilly
Size:
 Height 2.0m x Spread 4.0m



Code: ELR
Botanical Name:
Elaeocarpus reticulatus
Common Name:
 Blueberry Ash
Size:
 Height 9.0m x Spread 4.0m



Code: KAP
Botanical Name:
Kunzea ambigua
Common Name:
 Tick bush
Size:
 Height 5.0m x Spread 3.0m



Code: TRL
Botanical Name:
Tristaniopsis laurina 'Luscious'
Common Name:
 Watergum
Size:
 Height 7-12.0m x Spread 5.0m

Grassy and strappy plants



Code: Abi
Botanical Name:
Anigozanthos 'Bush inferno'
Common Name:
 Kangaroo Paw
Size:
 Height 0.6m x Spread 0.5m



Code: Abz
Botanical Name:
Anigozanthos 'Bush Zest'
Common Name:
 Kangaroo Paw
Size:
 Height 0.6m x Spread 0.5m



Code: Aca
Botanical Name:
Austrodanthonia caespitosa
Common Name:
 Wallaby Grass
Size:
 Height 0.9m x Spread 0.5m



Code: Arc
Botanical Name:
Arthropodium cirratum
Common Name:
 Renga renga lily
Size:
 Height 0.6m x Spread 0.6m



Code: Lco
Botanical Name:
Lomandra 'Crackerjack'
Common Name:
 Mat rush
Size:
 Height 0.6m x Spread 0.6m



Code: Lhy
Botanical Name:
Lomandra hystrix
Common Name:
 Mat rush
Size:
 Height 1.0m x Spread 1.0m



Code: Llc
Botanical Name:
Lomandra 'Little Con'
Common Name:
 Mat rush
Size:
 Height 0.3m x Spread 0.3m



Code: Lleg
Botanical Name:
Lomandra 'Emerald Grace'
Common Name:
 Mat rush
Size:
 Height 0.4m x Spread 0.4m



Code: LLL
Botanical Name:
Lomandra 'Little Lime'
Common Name:
 Mat rush
Size:
 Height 0.3m x Spread 0.3m



Code: Lltu
Botanical Name:
Lomandra 'Lime tuff'
Common Name:
 Mat rush
Size:
 Height 0.6m x Spread 0.6m

Shrubs



Code: Accc
Botanical Name:
Adenanthos cuneatus
Common Name:
 Jug Flower
Size:
 Height 2.0m x Spread 2.0m



Code: Ad
Botanical Name:
Acacia 'Limelight'
Common Name:
 River Wattle
Size:
 Height 1.2m x Spread 1.0m



Code: Asco
Botanical Name:
Adenanthos sericea Compact
Common Name:
 Dwarf woolly Bush
Size:
 Height 1.2m x Spread 1.2m



Code: Abu
Botanical Name:
Alyxia buxifolia
Common Name:
 Sea box
Size:
 Height 1-2.0m x Spread 2-4.0m



Code: Bvn
Botanical Name:
Baeckea virgata Dwarf Form
Common Name:
 Dwarf Heath Myrtle
Size:
 Height 1-1.5.0m x Spread 1-1.5.0m

Plant report

Shrubs



Code: Brc
Botanical Name:
Bauera rubioides
Common Name:
 River Rose
Size:
 Height 1.5m x Spread 1.0m



Code: Cse
Botanical Name:
Chrysocephalum semipapposum
Common Name:
 Clustered everlasting
Size:
 Height 0.6-1.0m x Spread 0.6-1.0m



Code: Pau
Botanical Name:
Pelargonium australe
Common Name:
 Native Geranium
Size:
 Height 0.5m x Spread 0.5m



Code: Tsph
Botanical Name:
Thryptomene saxicola 'FC Payne'
Common Name:
 Thryptomene
Size:
 Height 1.5m x Spread 1.5m



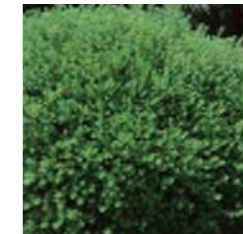
Code: Bis
Botanical Name:
Billardiera scandens
Common Name:
 Apple berry
Size:
 Height 1.5m x Spread 3.0m



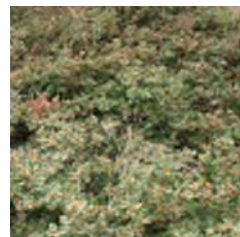
Code: Cupw
Botanical Name:
Chamelaucium 'Festive red'
Common Name:
 Wax flower festive red
Size:
 Height 1.5m x Spread 1.5m



Code: Pif
Botanical Name:
Pimelea ferruginea
Common Name:
 Rice Flower
Size:
 Height 1.2m x Spread 1.0m



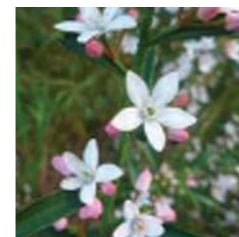
Code: Wfz
Botanical Name:
Westringia fruticosa 'Zena'
Common Name:
 Coastal Rosemary
Size:
 Height 2.0m x Spread 2.0m



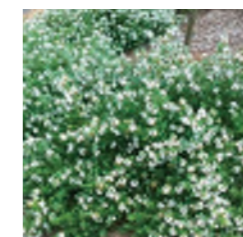
Code: Cap
Botanical Name:
Correa alba prostrate
Common Name:
 Prostrate White Correa
Size:
 Height 0.3m x Spread 2.0m



Code: Egc
Botanical Name:
Eremophila glabra 'compactum'
Common Name:
 Emu bush
Size:
 Height 0.5m x Spread 1.5m



Code: Pmp
Botanical Name:
Philotheca myoporoides 'Profusion'
Common Name:
 Wax flower
Size:
 Height 1.0m x Spread 1.0m



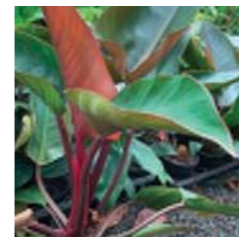
Code: WfLH
Botanical Name:
Westringia fruticosa 'Zena'
Common Name:
 Coastal Rosemary
Size:
 Height 0.3m x Spread 0.7m



Code: Cld
Botanical Name:
Crowea exalata 'Green Capre'
Common Name:
 Waxflower
Size:
 Height 0.5m x Spread 0.8m



Code: Emp
Botanical Name:
Eriostemon myoporoides 'Profusion'
Common Name:
 Long leaf wax flower
Size:
 Height 1.0m x Spread 1.0m



Code: Prc
Botanical Name:
Philodendron 'Rojo congo'
Common Name:
 Philodendron
Size:
 Height 1.0m x Spread 1.0m



Code: Wfg
Botanical Name:
Westringia fruticosa
Common Name:
 Coastal Rosemary
Size:
 Height 2.0m x Spread 0.4m



Code: Cca
Botanical Name:
Callistemon citrinus 'White Anzac'
Common Name:
 Bottlebrush
Size:
 Height 0.5m x Spread 3.0m



Code: Gfg
Botanical Name:
Grevillea 'Winpara Gold'
Common Name:
 Grevillea
Size:
 Height 2.0m x Spread 2.0m



Code: Robl
Botanical Name:
Rosmarinus officinalis 'Blue Lagoon'
Common Name:
 Rosemary
Size:
 Height 1.0m x Spread 1.0m



Code: Cref
Botanical Name:
Correa reflexa
Common Name:
 Native Fuchsia
Size:
 Height 1.2m x Spread 1.0m



Code: Lbr
Botanical Name:
Leucophyta brownii
Common Name:
 Cushion bush
Size:
 Height 1.2m x Spread 1.2m



Code: Sof
Botanical Name:
Salvia officinalis
Common Name:
 Sage
Size:
 Height 0.9m x Spread 0.9m

Plant report

Cascading, trailing and climbing plants



Code: Acw
Botanical Name:
Acacia 'Waterfall'
Common Name:
 River Wattle
Size:
 Height 0.3m x Spread 2.0m



Code: Cci
Botanical Name:
Casuarina 'Cousin it'
Common Name:
 Cousin it
Size:
 Height 0.2m x Spread 2.0m



Code: Hvsp
Botanical Name:
Hardenbergia 'Sea of purple'
Common Name:
 Hardenbergia
Size:
 Height 0.3m x Spread 0.1m



Code: Aph
Botanical Name:
Aphanopetalum resinolum
Common Name:
 Gumvine
Size:
 Height 3.0m x Spread 3.0m



Code: Dcr
Botanical Name:
Disphyma crassifolium
Common Name:
 Rounded noon flower
Size:
 Height 0.3m x Spread 1.0m



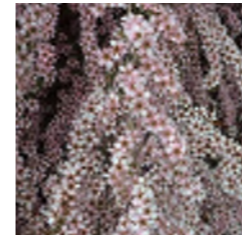
Code: Jcr
Botanical Name:
Juniperus communis 'Repanda'
Common Name:
 Prostrate juniper
Size:
 Height 0.3m x Spread 2.0m



Code: Appr
Botanical Name:
Acacia baileyana 'Prostrate'
Common Name:
 Cootamundra Wattle
Size:
 Height 0.6m x Spread 3.0m



Code: Gbr
Botanical Name:
Grevillea 'Bronze Rambler'
Common Name:
 Grevillea
Size:
 Height 0.5m x Spread 0.5m



Code: Scwc
Botanical Name:
Leptospermum 'Pink cascade'
Common Name:
 Tea tree
Size:
 Height 0.8m x Spread 1.5m



Code: Apg
Botanical Name:
Acacia 'Wattle Pot O Gold'
Common Name:
 Wattle
Size:
 Height 0.4m x Spread 4.0m



Code: HBS
Botanical Name:
Hibbertia scandens
Common Name:
 Guinea flower
Size:
 Height 3.0m x Spread 5.0m



Code: Mpp
Botanical Name:
Myoporum parvifolium 'Purpurea'
Common Name:
 Creeping boobialla
Size:
 Height 0.3m x Spread 2.0m



Code: Brco
Botanical Name:
Banksia integrifolia 'Rollercoaster'
Common Name:
 Banksia
Size:
 Height 0.4m x Spread 4.0m



Code: Hmhh
Botanical Name:
Hardenbergia 'Mini Haha'
Common Name:
 Hardenbergia
Size:
 Height 0.3m x Spread 0.1m

Plant report

Ground covers



Code: Bprl
Botanical Name:
Brachyscome 'Mauve delight'
Common Name:
 Native Daisy
Size:
 Height 0.3m x Spread 0.6m



Code: Gjn
Botanical Name:
Grevillea juniperina 'New blood'
Common Name:
 Grevillea
Size:
 Height 0.25m x Spread 1.5m



Code: Orv
Botanical Name:
Origanum vulgare
Common Name:
 Oregano
Size:
 Height 0.6m x Spread 0.6m



Code: Bbu
Botanical Name:
Bulbine bulbosa
Common Name:
 Bulbine Lily
Size:
 Height 0.8m x Spread 0.5m



Code: Ggc
Botanical Name:
Goodenia ovata 'Gold cover'
Common Name:
 Goodenia
Size:
 Height 0.3m x Spread 2.0m



Code: Ran
Botanical Name:
Rhodanthe anthemoides
Common Name:
 Chamomile Sunray
Size:
 Height 0.5m x Spread 1.0m



Code: Capi
Botanical Name:
Chrysocephalum apiculatum
Common Name:
 Yellow buttons
Size:
 Height 0.3m x Spread 0.5m



Code: Ild
Botanical Name:
Isopogon 'Little Drumstick'
Common Name:
 Drumsticks
Size:
 Height 0.7m x Spread 0.8m



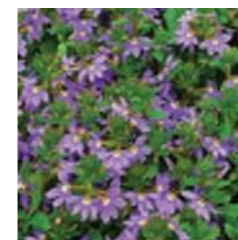
Code: Scwc
Botanical Name:
Scaevola 'Bondi White'
Common Name:
 Fairy Fan-flower
Size:
 Height 0.2m x Spread 0.4m



Code: Cap-2
Botanical Name:
Chrysocephalum baxteri
Common Name:
 Fringed everlasting
Size:
 Height 0.4m x Spread 0.4m



Code: Lpe
Botanical Name:
Limonium perezii
Common Name:
 Sea lavender
Size:
 Height 0.6m x Spread 0.6m



Code: SaPF
Botanical Name:
Scaevola 'Purple Fanfair'
Common Name:
 Fairy Fan-flower
Size:
 Height 0.2m x Spread 0.4m



Code: Css
Botanical Name:
Conostylis candicans
Common Name:
 Cotton heads
Size:
 Height 0.8m x Spread 0.8m



Code: Mhub
Botanical Name:
Melaleuca 'Ulladulla Beacon'
Common Name:
 Honey Myrtle
Size:
 Height 0.5m x Spread 2.0m



Code: SaWC
Botanical Name:
Scaevola 'White Carpet'
Common Name:
 Fairy Fan-flower
Size:
 Height 0.2m x Spread 0.4m

Plant Schedule Green Roof

ID	BOTANICAL NAME	COMMON NAME	GREEN FACTOR VEGETATION TYPE	ORIGIN	MATURE HEIGHT (M)	MATURE WIDTH (M)	IN GROUND (EXISTING) QUANTITY	IN GROUND (NEW) QUANTITY	GREEN WALL QUANTITY	GREEN FAÇADE QUANTITY	PLANTERS (ON STRUCTURE) QUANTITY	GREEN ROOF QUANTITY
Jcr	<i>Juniperus communis</i> 'Repanda'	Carpet Juniper	Ground Cover	Exotic	0.4	2.0						17
Orv	<i>Origanum vulgare</i>	Pot Marjoram, Oregano	Ground Cover	Exotic	0.2	1.0						58
Lpe	<i>Limonium perezii</i>	Sea Lavender	Ground Cover	Exotic	0.5	0.5						160
Aca	<i>Austrodanthonia caespitosa</i>	Wallaby Grass	Ground Cover	Indigenous	0.5	0.4						151
Bbu	<i>Bulbine bulbosa</i>	Bulbine Lily	Ground Cover	Indigenous	0.3	0.3						100
Brco	<i>Banksia integrifolia</i> 'Roller Coaster'	Prostrate Coast Banksia	Ground Cover	Indigenous	0.3	3.0						44
Ggc	<i>Goodenia ovata</i> 'Gold cover'	Goodenia	Ground Cover	Indigenous	0.3	2.0						65
Llc	<i>Lomandra</i> 'Little Con'	Little Con Mat Rush	Ground Cover	Indigenous	0.3	0.2						200
Mpp	<i>Myoporum parvifolium</i> 'Purpurea'	Creeping Boobiella	Ground Cover	Indigenous	0.3	2.0						94
HBS	<i>Hibbertia scandens</i>	Snake Vine	Ground Cover	Indigenous	0.3	1.0						10
KAP	<i>Kunzea ambigua</i>	Prostrate Tick Bush	Ground Cover	Indigenous	0.4	1.5						81
Lltu	<i>Lomandra</i> 'Lime Tuff'	Lime tuff Mat Rush	Ground Cover	Indigenous	0.3	0.3						111
LLL	<i>Lomandra</i> 'Little Lime'	Little Lime Mat Rush	Ground Cover	Indigenous	0.5	0.7						73
SaPF	<i>Scaevola aemula</i> 'Purple Fanfare'	Scaevola Purple Fanfare	Ground Cover	Indigenous	0.3	1.5						69
SaWC	<i>Scaevola albida</i> 'White Carpet'	Scaevola White Carpet	Ground Cover	Indigenous	0.3	1.5						20
Capi	<i>Chrysocephalum apiculatum</i>	Yellow Buttons	Ground Cover	Indigenous	0.4	0.3						100
Cap-2	<i>Chrysocephalum baxteri</i>	Fringed Everlasting	Ground Cover	Indigenous	0.3	0.3						70
Cap	<i>Correa alba prostrate</i>	White Correa	Ground Cover	Indigenous	0.3	1.2						45
Dcr	<i>Disphyma crassifolium</i>	Rounded Noon-flower	Ground Cover	Indigenous	0.4	0.6						57
Ran	<i>Rhodanthe anthemoides</i>	Chamomile Sunray	Ground Cover	Indigenous	0.2	0.3						50
Ggf	<i>Grevillea</i> 'Winpara Gold'	Compact Grevillea	Ground Cover	Indigenous	0.5	1.5						90
Gjn	<i>Grevillea juniperina</i> 'New Blood'	Grevillea juniperina 'New Blood'	Ground Cover	Indigenous	0.5	1.5						94
Aph	<i>Aphenopetalum resinosum</i>	Gum Vine	Ground Cover	Native	0.5	2.0						34
Bvn	<i>Babingtonia virgata nana</i>	Dwarf Baeckia	Ground Cover	Native	0.5	2.0						3
Cca	<i>Callistemon citrinus</i> 'Anzac'	White Anzac Bottlebrush	Ground Cover	Native	0.5	1.5						141
Cci	<i>Casuarina glauca</i> 'Cousin It'	Cousin It	Ground Cover	Native	0.5	2.0						66
Bprl	<i>Brachysome multifida</i> 'Mauve Delight'	Cut leaf Daisy	Ground Cover	Native	0.3	0.2						39
Css	<i>Conostylis candicans</i> 'Silver Sunrise'	Grey Cottonheads	Ground Cover	Native	0.3	0.5						80
Cse	<i>Chrysocephalum semipapposum</i>	Clustered Everlasting	Ground Cover	Native	0.2	0.4						32
WfLH	<i>Westringia fruticosa</i> 'Low Horizon'	Coastal Rosemary Low Horizon	Ground Cover	Native	0.3	0.8						171
Robl	<i>Rosmarinus officinalis</i> 'Blue lagoon'	Blue Lagoon Rosemary	Small Shrub	Exotic	0.8	1.5						96
Sof	<i>Salvia officinalis</i>	Sage	Small Shrub	Exotic	1.0	1.5						58
Hvsp	<i>Hardenbergia violacea</i> 'Sea of Purple'	Sea of Purple Hardenbergia	Small Shrub	Indigenous	0.6	1.0						100

Plant Schedule Green Roof

ID	BOTANICAL NAME	COMMON NAME	GREEN FACTOR VEGETATION TYPE	ORIGIN	MATURE HEIGHT (M)	MATURE WIDTH (M)	IN GROUND (EXISTING) QUANTITY	IN GROUND (NEW) QUANTITY	GREEN WALL QUANTITY	GREEN FAÇADE QUANTITY	PLANTERS (ON STRUCTURE) QUANTITY	GREEN ROOF QUANTITY
Lco	<i>Lomandra confertifolia rubiginosa</i> 'Crackerjack'	Crackerjack Mat Rush	Small Shrub	Indigenous	0.7	1.0						40
Lhy	<i>Lomandra hystrix</i>	Green Mat Rush	Small Shrub	Indigenous	1.0	0.6						53
Lpvd	<i>Leptospermum polygalifolium</i> 'Pink Cascade'	Prostrate Tea Tree	Small Shrub	Indigenous	1.2	2.0						80
Bis	<i>Billardiera scandens</i>	Apple Berry	Small Shrub	Indigenous	1.4	1.5						57
Pau	<i>Pelargonium australe</i>	Coastal Geranium	Small Shrub	Indigenous	0.6	1.4						100
Apg	<i>Acacia acinacea</i> 'Pot o' gold'	Gold Dust Wattle	Small Shrub	Indigenous	1.4	1.0						80
Acl	<i>Acacia cognata</i> 'Limelight'	River Wattle	Small Shrub	Indigenous	1.0	1.0						20
Pmp	<i>Philotheca myoporoides</i> 'Profusion'	Wax Flower	Small Shrub	Indigenous	1.2	1.5						62
Accc	<i>Adenanthos cuneatus</i>	Woolly Bush	Small Shrub	Indigenous	1.4	1.0						23
Abi	<i>Anigozanthos</i> 'Bush Inferno'	Kangaroo paw	Small Shrub	Indigenous	0.6	0.5						33
Abz	<i>Anigozanthos</i> 'Bush Zest'	Kangaroo paw	Small Shrub	Indigenous	0.6	0.5						100
Cref	<i>Correa reflexa</i>	Native Fuchsia	Small Shrub	Indigenous	1.4	1.0						52
Tsph	<i>Thryptomene saxicola</i> 'Payne's Hybrid'	Payne's Thryptomene	Small Shrub	Indigenous	1.2	1.3						64
Mhub	<i>Melaleuca hypericifolia</i> 'Ulladulla Beacon'	Honey Myrtle	Small Shrub	Native	0.8	2.0						80
Wfz	<i>Westringia fruticosa</i> 'Zena'	Coastal Rosemary	Small Shrub	Native	1.4	1.5						88
Brc	<i>Bauera rubiodes</i> 'Rose Carpet'	Dog Rose	Small Shrub	Native	0.6	0.8						3
Cupw	<i>Chamalauceum uncinatum</i> 'Festive Red'	Festive Red Geraldton Wax	Small Shrub	Native	1.4	1.0						100
Cld	<i>Crowea exalata</i>	Crowea	Small Shrub	Native	1.4	1.5						100
Ild	<i>Isopogon aneminofolius</i> 'Little Drumsticks'	Little Drumsticks	Small Shrub	Native	0.7	1.0						56
Pif	<i>Pimelea ferruginea</i>	Pink Rice Flower	Small Shrub	Native	1.0	0.6						148

Plant Schedule Ground Floor Access

ID	BOTANICAL NAME	COMMON NAME	GREEN FACTOR VEGETATION TYPE	ORIGIN	MATURE HEIGHT (M)	MATURE WIDTH (M)	IN GROUND (EXISTING) QUANTITY	IN GROUND (NEW) QUANTITY	GREEN WALL QUANTITY	GREEN FAÇADE QUANTITY	PLANTERS (ON STRUCTURE) QUANTITY
Northern Façade											
Brco	<i>Banksia integrifolia</i> 'Roller Coaster'	Prostrate Coast Banksia	Ground Cover/ Cascader	Indigenous	0.3	3.0				46	
Mpp	<i>Myoporum parvifolium</i> 'Purpurea'	Creeping Boobiolla	Ground Cover/ Cascader	Indigenous	0.2	1.8				60	
Gbr	<i>Grevillea</i> 'Bronze Rambler'	Prostrate Grevillea	Ground Cover/ Cascader	Indigenous	0.4	2.0				37	
Acwa	<i>Acacia cognate</i> 'Waterfall'	Waterfall River Wattle	Ground Cover/ Cascader	Indigenous	0.4	1				12	
Scwc	<i>Scaevola albida</i> 'Bondi White'	Scaevola White Carpet	Ground Cover/ Cascader	Indigenous	0.3	1.5				13	
Appr	<i>Acacia pravissima</i> 'Prostrate'	Wattle	Ground Cover/ Cascader	Indigenous	0.4	1.5					9
Gjn	<i>Grevillea juniperina</i> 'New Blood'	Grevillea juniperina 'New Blood'	Ground Cover/ Cascader	Indigenous	0.5	1.5					3
Bvn	<i>Babingtonia virgata</i> 'Nana'	Dwarf Baeckia	Ground Cover/ Cascader	Native	0.5	2				4	
Accc	<i>Adenanthos cuneatus</i>	Woolly Bush	Small Shrub	Indigenous	1.5	1.0					3
Asco	<i>Adenanthos sericeus compacta</i>	Dwarf Woolly Bush	Small Shrub	Indigenous	0.9	1.0					1
Egc	<i>Eremophila glabra compact</i>	Emu Bush	Small Shrub	Indigenous	0.6	1					3
Hmhh	<i>Hardenbergia violacea</i> 'Mini Haha'	Sea of Purple Hardenbergia	Small Shrub/ Cascader	Indigenous	0.6	1.0				33	
ELR	<i>Elaeocarpus reticulatus</i>	Blueberry Ash	Small Tree	Indigenous	5.0	3.0					3
ASRH	<i>Acmena smithii</i> 'Red head'	Lillypilly	Small Tree	Native	5.0	3.0					7
Trl	<i>Tristaniopsis laurina</i> 'Luscious'	Water Gum	Small Tree	Native	5.0	5.0					4
Southern Façade											
Jcr	<i>Juniperus communis</i> 'Repanda'	Carpet Juniper	Ground Cover/ Cascader	Exotic	0.4	2.0			14		
Rco	<i>Lomandra</i> 'Emerald Grace'	Emerald Grace Mat Rush	Ground Cover	Indigenous	0.3	0.3			20		
HBS	<i>Hibbertia scandens</i>	Snake Vine	Ground Cover/ Cascader	Indigenous	0.5	2			8		
Ckk	<i>Casuarina</i> 'Kattang Karpet'	Prostrate She Oak	Ground Cover/ Cascader	Native	0.3	1.5			6		
Aph	<i>Aphenopetalum resinosum</i>	Gum Vine	Ground Cover/ Cascader	Native	0.5	2			26		
Arc	<i>Arthropodium cirratum</i>	New Zealand Rock Lily	Small Shrub	Exotic	0.6	0.6			6		
Lleg	<i>Philodendron</i> 'Rojo Congo'	Rojo Congo	Small Shrub	Exotic	0.8	1			1		

Plant Schedule Ground Floor Access

ID	BOTANICAL NAME	COMMON NAME	GREEN FACTOR VEGETATION TYPE	ORIGIN	MATURE HEIGHT (M)	MATURE WIDTH (M)	IN GROUND (EXISTING) QUANTITY	IN GROUND (NEW) QUANTITY	GREEN WALL QUANTITY	GREEN FAÇADE QUANTITY	PLANTERS (ON STRUCTURE) QUANTITY
Ground Floor South											
Jcr	<i>Juniperus communis</i> 'Repanda'	Carpet Juniper	Ground Cover/ Cascader	Exotic	0.4	2		52			
Aph	<i>Aphenopetalum resinosum</i>	Gum Vine	Ground Cover/ Cascader	Native	0.5	2		12			
Lir	<i>Liriope Muscari</i>	Lilyturf	Ground Cover	Exotic	0.4	0.4		49			
Ground Floor North											
Mpp	<i>Myoporum parvifolium</i> 'Purpurea'	Creeping Boobiolla	Ground Cover/ Cascader	Indigenous	0.2	1.8		34			
Lbr	<i>Leucophyta brownii</i>	Cushion Bush	Ground Cover	Native	0.3	0.7		13			
Ccan	<i>Conostylis candicans</i>	Grey Cottonheads	Ground Cover	Native	0.3	0.4		20			
Bvn	<i>Babingtonia virgata</i> 'nana'	Dwarf Baeckia	Ground Cover/ Cascader	Native	0.5	2		5			
Abu	<i>Alyxia buxifolia</i>	Sea Box	Small Shrub	Indigenous	0.8	0.8		5			
Acl	<i>Acacia cognata</i> 'Limelight'	River Wattle	Small Shrub	Indigenous	1.0	1.0		16			
Emp	<i>Eriostemon myoporoides</i> 'Profusion'	Long-Leaf Wax flower	Small Shrub	Indigenous	0.9	1.2		4			
Asco	<i>Adenanthos sericeus compacta</i>	Dwarf Woolly Bush	Small Shrub	Indigenous	0.9	1.0		3			
Wfg	<i>Westringia Fruticosa</i> 'Gina'	Coastal Rosemary	Small Shrub	Native	1.4	1.5		3			
Hmhh	<i>Hardenbergia</i> 'Mini haha'	False Sarsaparilla	Small Shrub/ Cascader	Indigenous	0.6	1.0		36			
Trl	<i>Tristaniopsis laurina</i> 'Luscious'	Water Gum	Small Tree	Native	5.0	5.0		1			

GREEN FACTOR SCORECARD

14-16 Bruce Street | Kensington | Multi-unit residential
 Planning application number:
 City of Melbourne



GREEN FACTOR SCORE

0.67

905.4 m² of Green Factor area
 1343 m² total site area

[How does this compare?](#)

GREEN ELEMENTS

Ranked by % contribution to Green Factor

1. Ground cover	32.8%
2. Small tree (canopy width < 6m)	30.2%
3. Small shrub (< 1.5m height)	13.8%
4. Climbers	6.9%
5. Soil or substrate (over 500mm depth)	3.8%
6. Soil or substrate (200 - 500mm depth)	3.5%
7. Soil or substrate (under 200mm depth)	3.5%
8. Large shrub (> 1.5m height)	3.2%

ECOSYSTEM OUTCOMES

Relative contribution



LOCATION OF GREEN ELEMENTS

Ranked by % contribution to Green Factor

Planters (on structure)	44.8%
Green Roof	44.5%
Green Facade	6.9%
In ground (new)	3.8%
Non-green area	None

GREEN FACTOR AREA



PROJECT INFORMATION

Project considerations

- Certified maintenance plan
- Landscape architect engaged in design
- Landscape brief developed
- Irrigation consultant appointed
- Rain/non-potable water used for irrigation
- Urban Forest Fund

Published July 16, 2025

SPECIFIED GREEN INFRASTRUCTURE ELEMENTS

In ground (new)

Medium tree (canopy width 6m - 10m)	Native	1 pcs
Small shrub (< 1.5m height)	Native	6 sqm
Ground cover	Native	5 sqm
Soil or substrate (over 500mm depth)	Soil	11 sqm

Planters (on structure)

Small shrub (< 1.5m height)	Indigenous	3 sqm
Small tree (canopy width < 6m)	Native	14 pcs
Large shrub (> 1.5m height)	Native	14 sqm
Small shrub (< 1.5m height)	Native	21 sqm
Ground cover	Native	41 sqm
Large shrub (> 1.5m height)	Exotic	14 sqm
Small shrub (< 1.5m height)	Exotic	7 sqm
Ground cover	Exotic	3 sqm
Soil or substrate (over 500mm depth)	Soil	7% sqm

Green Facade

Climbers	Native	94 sqm
----------	--------	--------

Green Roof

Small shrub (< 1.5m height)	Indigenous	64 sqm
Ground cover	Indigenous	128 sqm
Ground cover	Native	126 sqm
Small shrub (< 1.5m height)	Exotic	16 sqm
Ground cover	Exotic	64 sqm
Soil or substrate (200 - 500mm depth)	Soil	80 sqm
Soil or substrate (under 200mm depth)	Soil	320 sqm



14-26 Bruce Street KENSINGTON-
 CASE STUDY

Date 08/01/2025

LANDSCAPE



Rev: E
 DWG: 33

Planting green roof



Apg Acl Accc Abi Abz



Brc Bis Bprl Bbu Cca



Cse Ccs Cap Cref Cld



Hvsp HBS lld Jcr KAP



LLL Lco Lhy Mhub Mpp



Ran Robl Sof SaPF SaWC



Aph Aca Bvn Brco



Cci Cupw Capi Cap-2



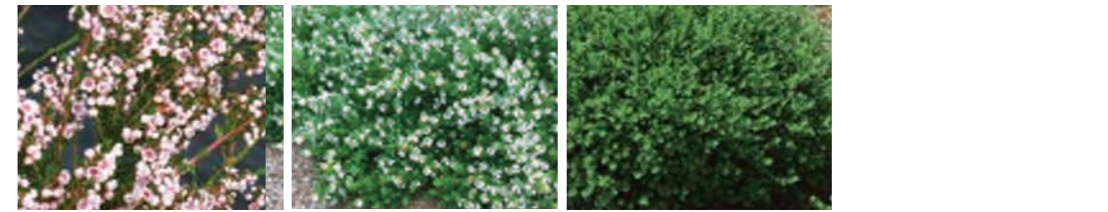
Dcr Ggc Gfg Gjn



Lpvd Lpe Lltu Llc



Orv Pau Pmp Pif



Tsph WfLH Wfz

Plant façade

Northern façade



Acw Appr ASRH Accc



ELR Egc Gbr Gjn



Asco Bvn Brco



Hmhh Mpp Scwc TRL

Southern façade



Aph Arc Cci HBS



Jcr Lleg Prc

Ground floor north



Acl Asco Abu Bvn

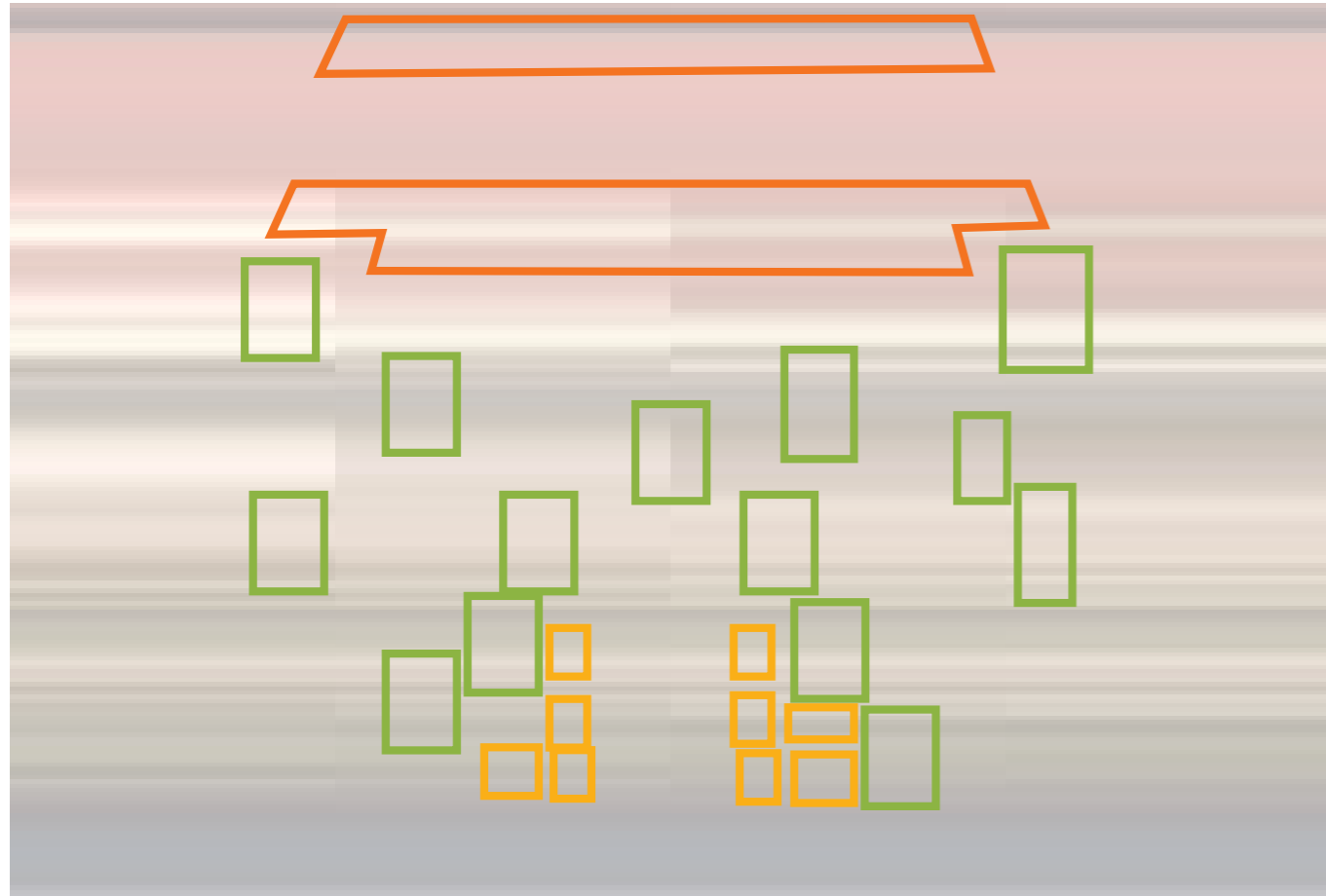


Ccan Emp Hmhh Lbr



Mpp TRL Wfg

Images



Planting typologies

Legend

-  Roof Planting
-  Lightweight Tree Planters
-  Lightweight Planters



Image 1 Façade from Bruce Street public domain

- The view from Bruce Street demonstrates how the street tree planting contributes to the greening of the façade.
- Effective façade greening across the whole elevation makes the building contribute to urban greening, especially in the heavily urbanised character of Kensington.
- A north facing façade gives the best results for greening as it enables thriving growth of small trees and shrubs. There are more challenges on eastern and western façades, however with the right soil volumes, species selection and maintenance greening is possible.
- Full greening is very challenging on a southern façade and building articulation is better achieved through architectural means.

Image: D Hannah 2024

Images



Image 2 Oblique aerial to south-east

- This view shows the diversity in façade greening and how the building slab edge responds to the horticultural needs of the trees and shrubs by stepping in to enable overhead rain and light.
- It is expected that the façade greening will increase by at least two times as the planting establishes.
- The green within the Moonee Ponds Creek Reserve is seen in the distance.
- The extensive green roof is dramatically different to the existing surrounding warehouse roofs.

Image: D Hannah 2024



Image 3 Oblique aerial to south-west

- The extensive roof shows the diversity of over one hundred different species of indigenous plants which is a goal of a bioroof.
- The extent of greening is well balanced with the services and photovoltaic array spatial needs.
- There is a clear maintenance border around the perimeter.

Image: D Hannah 2024



How to contact us

Online:

melbourne.vic.gov.au

In person:

Melbourne Town Hall - Administration Building
120 Swanston Street, Melbourne
Business hours, Monday to Friday
(Public holidays excluded)

Telephone:

03 9658 9658
Business hours, Monday to Friday
(Public holidays excluded)

Fax:

03 9654 4854

In writing:

City of Melbourne
GPO Box 1603
Melbourne VIC 3001
Australia



Interpreter services

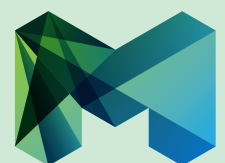
We cater for people of all backgrounds
Please call 03 9280 0726

03 9280 0717 廣東話
03 9280 0719 Bahasa Indonesia
03 9280 0720 Italiano
03 9280 0721 普通话
03 9280 0722 Soomaali
03 9280 0723 Español
03 9280 0725 Việt Ngữ
03 9280 0726 عربي
03 9280 0726 한국어
03 9280 0726 हिंदी
03 9280 0726 All other languages

National Relay Service:

If you are deaf, hearing impaired or speech-impaired,
call us via the National Relay Service: Teletypewriter (TTY)
users phone 1300 555 727 then ask for 03 9658 9658
9am to 5pm, Monday to Friday (Public holidays excluded)

melbourne.vic.gov.au



CITY OF MELBOURNE