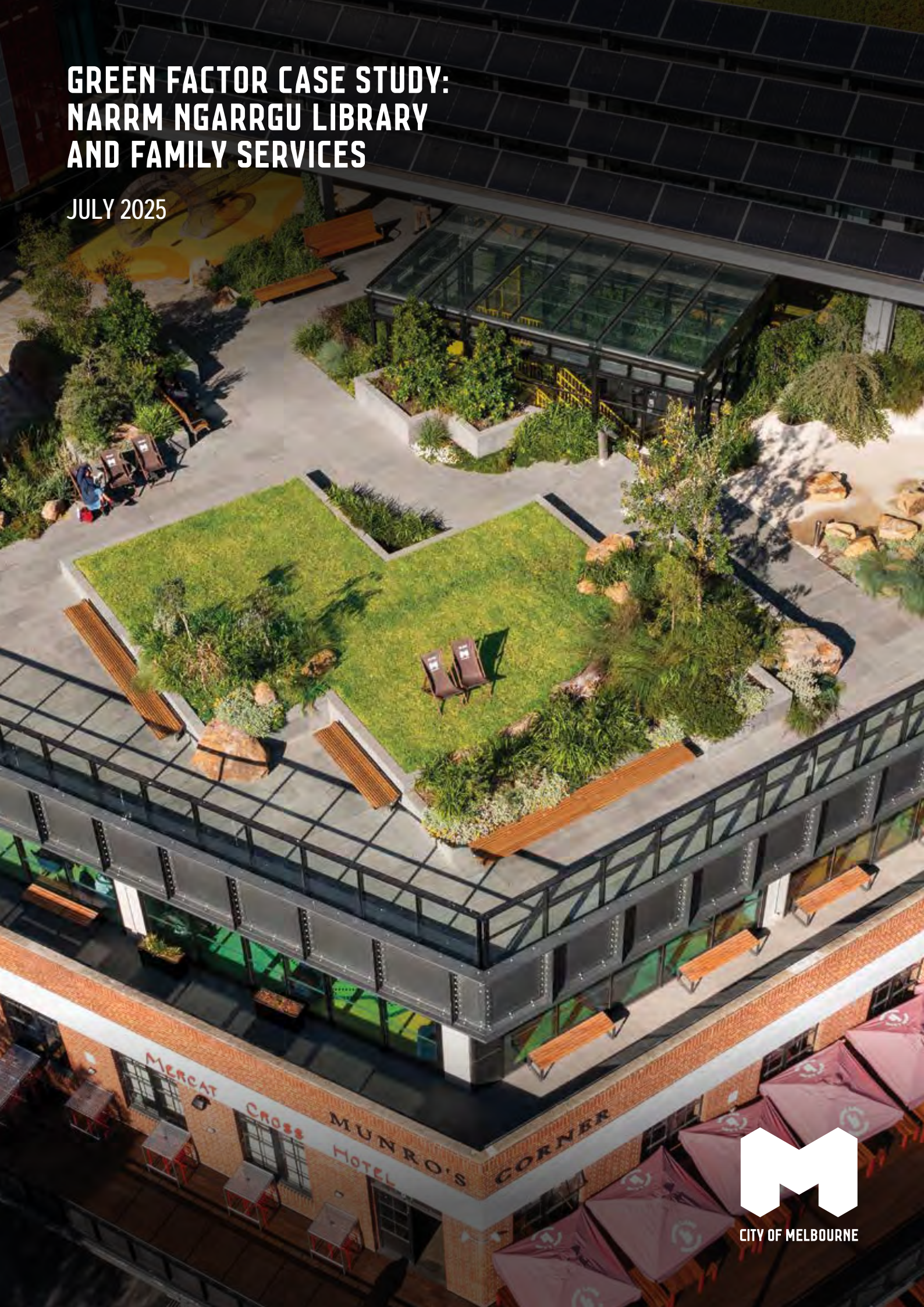


# GREEN FACTOR CASE STUDY: NARRM NGARRGU LIBRARY AND FAMILY SERVICES

JULY 2025



CITY OF MELBOURNE



## **Acknowledgement of Traditional Owners**

The City of Melbourne respectfully acknowledges the Traditional Owners of the land we govern, the Wurundjeri Woi-wurrung and Bunurong / Boon Wurrung peoples of the Kulin and pays respect to their Elders past and present. We acknowledge and honour the unbroken spiritual, cultural and political connection they have maintained to this unique place for more than 2000 generations.

We accept the invitation in the Uluru Statement from the Heart and are committed to walking together to build a better future.

## Council Plan 2021-25

The Council Plan 2021-25 sets out our strategic direction and commitment to the community for the next four years. Based on six strategic objectives for our city, this is our detailed plan for our city's revitalisation and considers the needs of all people who access and experience the City of Melbourne municipality. For more information visit [melbourne.vic.gov.au/council-plan](https://melbourne.vic.gov.au/council-plan)



### Climate and biodiversity emergency

Melbourne is a city setting the standard on climate action. Prioritising our environment and taking urgent action to reduce emissions and waste is key to protecting public health, strengthening the economy and creating a city that mitigates and adapts to climate change.

# CONTENTS

Introduction	4
Green Factor tool	4
Amendment C376: Sustainable Building Design	4
How to use this document	5
Case Study: narm ngarrgu Library and Family Services	7
Project summary	7
Application details	8
Appendix 1: Example town planning landscape package submission	24

July 2025

Cover Image: Rooftop terrace at narm ngarrgu Library and Family Services, Melbourne. Photo credit: David Hannah.

## Acknowledgements:

Many people contributed to the development of this case study and the Green Factor tool. We are truly grateful and would like to thank all contributors including Bush Projects, HIP V. HYPE, Little Sketches, the University of Helsinki and the University of Melbourne.

## Disclaimer

This report is provided for information and it does not purport to be complete. While care has been taken to ensure the content in the report is accurate, we cannot guarantee it is without flaw of any kind. There may be errors and omissions or it may not be wholly appropriate for your particular purposes. In addition, the publication is a snapshot in time based on historic information which is liable to change. The City of Melbourne accepts no responsibility and disclaims all liability for any error, loss or other consequence which may arise from you relying on any information contained in this report.

# INTRODUCTION

## Green Factor tool

The Green Factor tool is a free online green infrastructure assessment tool developed by City of Melbourne. It is designed to help landscape architects, designers, planners and developers benchmark and improve greening outcomes for proposed developments. Green Factor supports City of Melbourne's ambitions to increase the quality and quantity of greening in the private realm. This forms part of our commitment to respond to the climate and biodiversity emergency.

The Green Factor tool offers a simple and iterative process that prompts users to consider green roofs, vertical greening, vegetation retention, rain gardens, canopy trees and biodiversity as part of their design response. Our environmental strategies have been used to prioritise the types of greening that will provide greatest benefit to the public and the environment. The scoring of Green Factor is underpinned by the latest research into the environmental and social benefits of green infrastructure.

Green Factor will enable new developments to deliver benefits in the following areas:

- urban heat island effect reduction
- biodiversity and habitat provision
- stormwater reduction
- social amenity such as recreation and mental wellbeing
- urban food production
- aesthetic values.

## Amendment C376: Sustainable Building Design

The Green Factor tool is part of a larger environmentally sustainable design planning scheme amendment that City of Melbourne is pursuing, Amendment C376: Sustainable Building Design.

The amendment is a key action from City of Melbourne's Green Our City Strategic Action Plan and includes introducing changes to the planning scheme to encourage more green infrastructure within the private realm. This will be achieved through planning controls in the form of a Design Development Overlay. We have undertaken rigorous and feasibility assessments with building industry users to the viability of these requirements in future developments.

Embedded into our proposed Amendment C376 is a minimum requirement that all new and existing developments with works resulting in more than 1000 square metres of additional gross floor area should achieve a Green Factor score of 0.55.

Additionally, as part of the DDO submission requirements a Green Factor scorecard needs to be submitted as part of the landscape documentation for relevant planning applications. The Green Factor tool complements other requirements to achieve ratings in existing, industry recognised Environmentally Sustainable Design tools, which demonstrate how developments can achieve industry best practice targets.

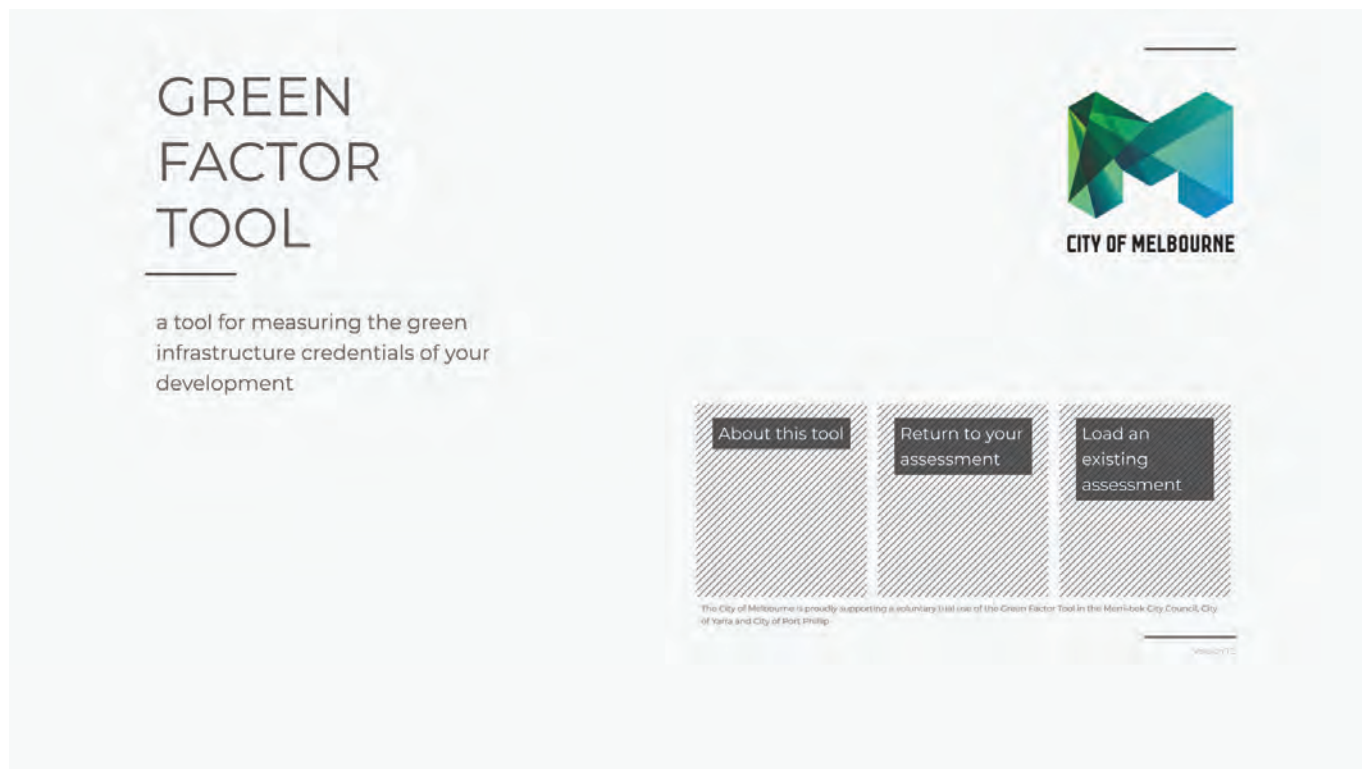
**Access the Green Factor tool online at**  
[www.greenfactor.com.au](http://www.greenfactor.com.au)

For more information contact  
[greeningmelbourne@melbourne.vic.gov.au](mailto:greeningmelbourne@melbourne.vic.gov.au)

## How to use this document

This document will take you through a Green Factor tool assessment process using the case study of a City of Melbourne project, narm ngarrgu Library and Family Services, located in the Queen Victoria Market precinct.

This case study will help you understand what information is required to develop a high-quality Green Factor landscape package as part of your planning application.





# CASE STUDY: NARRM NGARRGU LIBRARY AND FAMILY SERVICES

## Project summary

<b>Location</b>	narrm ngarrgu Library and Family Services, 141 Therry Street, Melbourne VIC 3000
<b>Development type</b>	Public building
<b>Landscape design</b>	Bush Projects
<b>Completion date</b>	November 2023
<b>Green Factor score</b>	0.79



Rooftop terrace at narrm ngarrgu Library and Family Services - artist's impression  
Image courtesy of Bush Projects

## Application details

### About the site

narrm ngarrgu Library and Family Services is part of the Munro development in the Queen Victoria Market Precinct. The development also features community housing, retail spaces and an underground car park.

The rooftop terrace is located on the third floor, adjacent to the children's playrooms and family services. The public can access the rooftop terrace during opening hours. The design team worked alongside First Nations Elders, artists and community to reflect their knowledge systems and bring this warm, welcoming space to life.

For this case study example, we have applied an arbitrary site boundary to this project because it is a retrofit of an existing building.

This project has a site area of 966 square metres as shown in Figure 1. This site area will be used to calculate the Green Factor score.

### Tips for your Green Factor application:

- The Green Factor tool requires you to provide details about your project site area, location and boundaries, as well as basic specifications of the green infrastructure elements including soil area and plant type, quantities and coverage.
- Keep in mind that the Green Factor tool can be used at different stages of your project.
  - 1. Early concept design:** If you're early in your planning and design process, use the Green Factor tool as part of an iterative process throughout the design phase. Try different inputs to explore how it is possible to increase the quantity (area of greening) and quality (type of green infrastructure inputs) of greening in your project to achieve a high Green Factor score.
  - 2. Final stages of design:** If you're close to lodging your planning application, we recommend having a comprehensive landscape package on hand when using the tool. To achieve a higher Green Factor score, you'll likely be focusing on improving the quality of greening (type of green infrastructure inputs) as opposed to making significant changes to the total area of greening within the project site area.
- For typical statutory planning applications, the site area is defined by the certificate of title and associated site boundaries.
- All proposed greening must be located within the site boundary and be external to the building envelope.



Figure 1. narrm ngarrgu Library and Family Services project site boundary. Taken from Appendix 1: Example town planning landscape package submission.



Rooftop terrace at narm ngarrgu Library and Family Services - Artist's impression  
Image courtesy of Bush Projects





Rooftop terrace at narrm ngarrgu Library and Family Services - Artist's impression  
Image courtesy of Bush Projects

## Green infrastructure elements

Your project's proposed green infrastructure elements are assigned an 'area' for input into the Green Factor tool. The green infrastructure areas relevant to this project are planters (on structure), green roof and green facade, as described in Table 1.




## Green Factor input summary

Figure 2 provides a summary of the inputs submitted for narm ngarrgu Library and Family Services project as part of the Green Factor assessment.

The specified green infrastructure elements used here are reflective of the level of detail needed for a Green Factor submission at planning application stage. This includes basic specifications of soil area, plant category, type and coverage, and tree quantities for each area.

Explore the illustrations (Figure 3, 4 and 5) to understand how the green infrastructure elements have been incorporated into the project's landscape design from a Green Factor perspective.

Table 1. Green infrastructure areas relevant for narm ngarrgu Library and Family Services.

GREEN INFRASTRUCTURE AREA		DESCRIPTION
<b>Planters (on structure)</b>		<p>Planters are on-structure containers consisting of a raised edge with or without a solid base. They can be used at ground level, on balconies or podiums or on roofs. They are different from green roofs and can support small and medium trees with the right soil volume.</p>
<b>Green roof</b>		<p>A green roof is a vegetated landscape built up from a series of layers that are installed on a roof surface. They can be installed layer by layer on the roof ('loose laid') or as modular, pre-prepared layers in trays.</p>
<b>Green facade</b>		<p>A green facade is created by growing climbing plants up and across the facade of a building, either from plants grown in garden beds at its base, or by container planting installed at different levels across the building. Climbing plants can attach directly to the surface of a building or they can be supported on a structure independent of the building.</p>

## Summary of Green Factor inputs

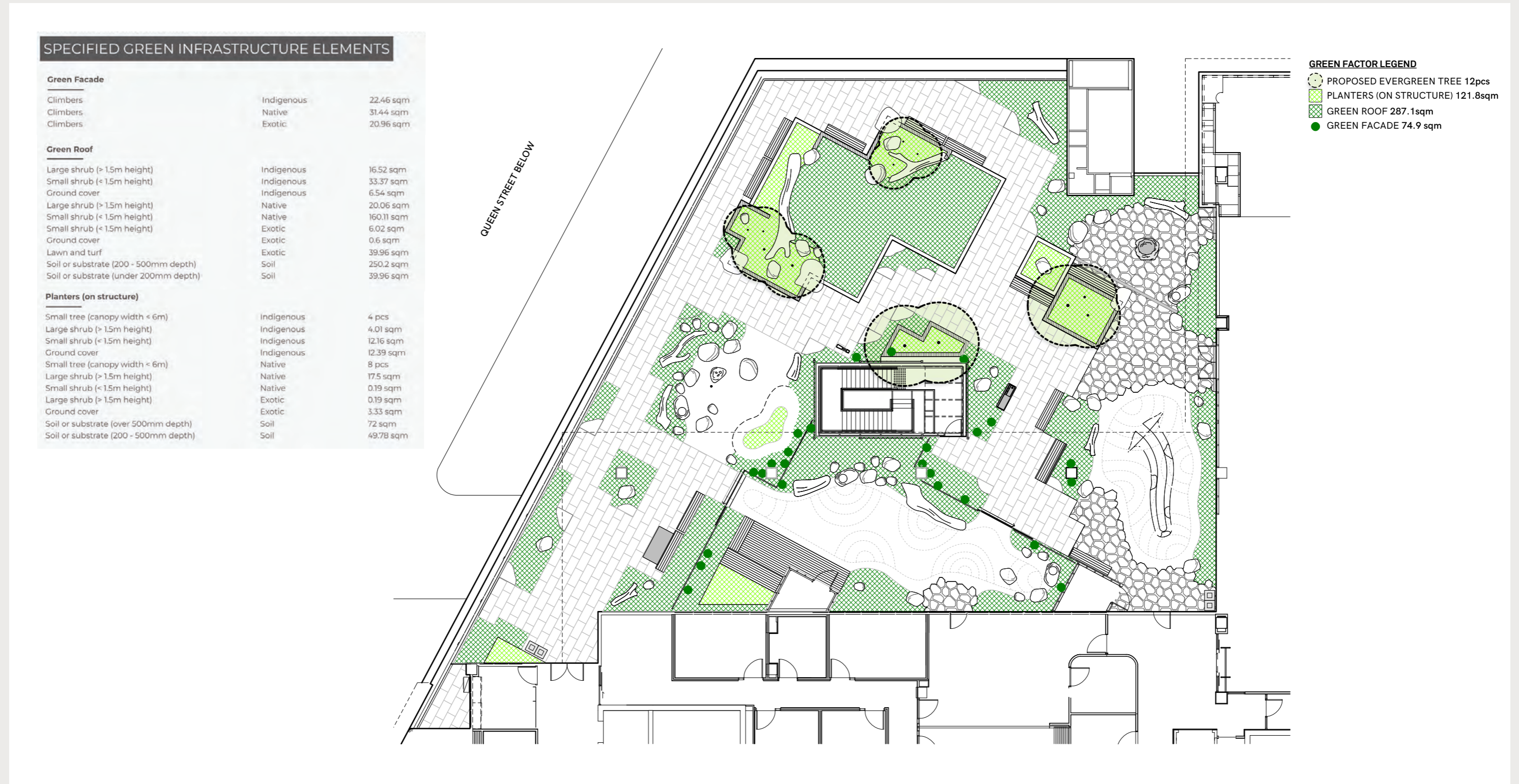


Figure 2. Summary of the Green Factor inputs for narm ngarrgu Library and Family Services, which is broken down into areas and specified green infrastructure elements.

## Green Infrastructure area: Planters (on structure)



### Planters (on structure)

This area features a total of eight raised planters supporting various small trees, shrubs and groundcover plants.

The planters cover a total area of 121.8 square metres.

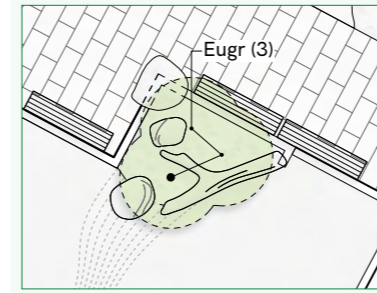
### SPECIFIED GREEN INFRASTRUCTURE ELEMENTS

#### Planters (on structure)

Small tree (canopy width < 6m)	Indigenous	4 pcs
Large shrub (> 1.5m height)	Indigenous	4.01 sqm
Small shrub (< 1.5m height)	Indigenous	12.16 sqm
Ground cover	Indigenous	12.39 sqm
Small tree (canopy width < 6m)	Native	8 pcs
Large shrub (> 1.5m height)	Native	17.5 sqm
Small shrub (< 1.5m height)	Native	0.19 sqm
Large shrub (> 1.5m height)	Exotic	0.19 sqm
Ground cover	Exotic	3.33 sqm
Soil or substrate (over 500mm depth)	Soil	72 sqm
Soil or substrate (200 - 500mm depth)	Soil	49.78 sqm

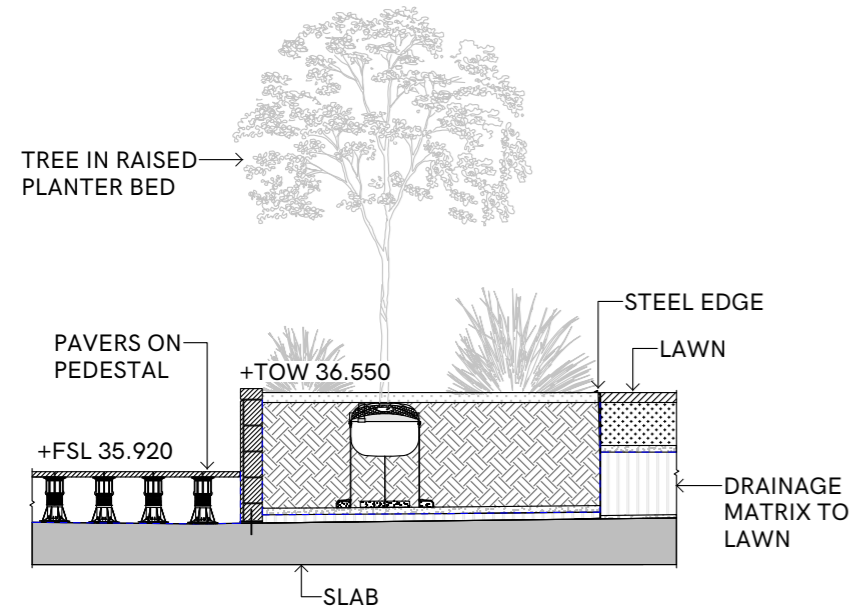
### *Eucalyptus gregsoniana*

GF input: 3 pcs /  
Small tree / Native



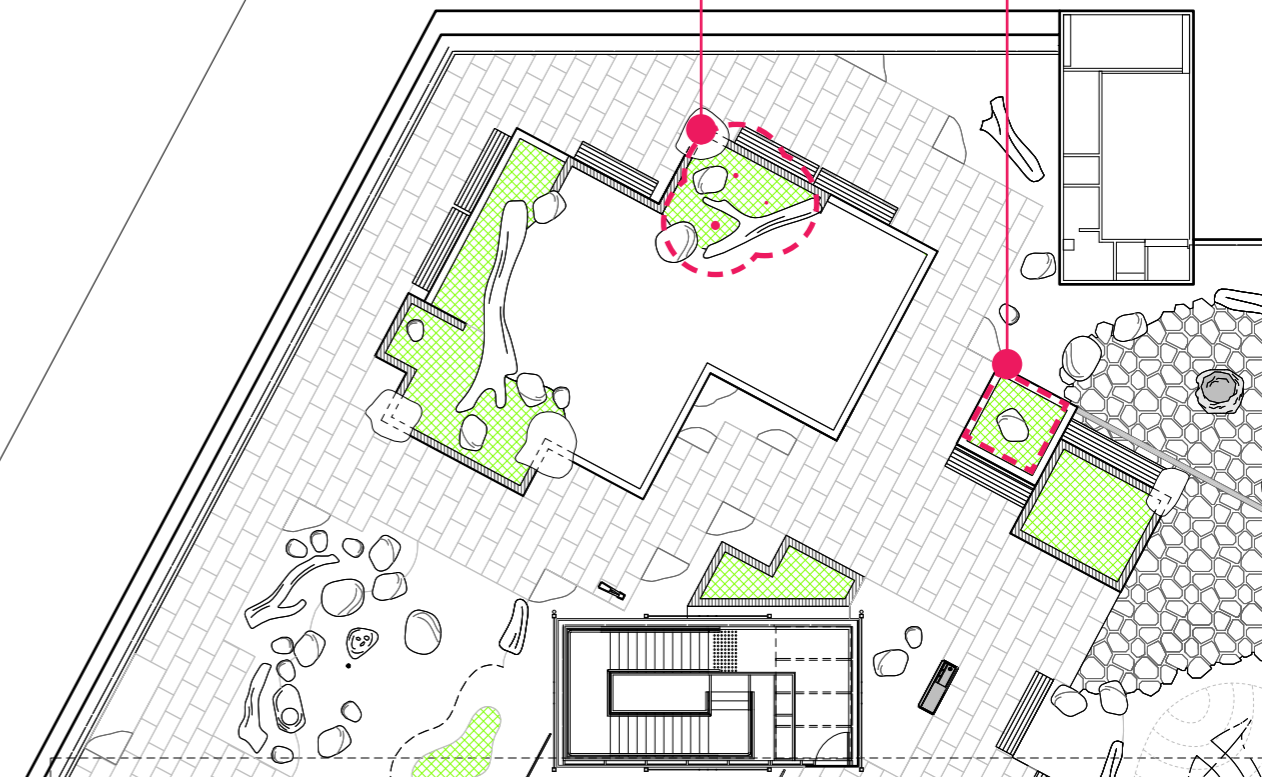
### Soil area for individual planter

GF input: Soil cover 200-500mm depth / 4.3 sqm



03 SECTION EE  
1:50

QUEEN STREET BELOW



#### GREEN FACTOR LEGEND

PLANTERS (ON STRUCTURE) 121.8sqm

Figure 3. Illustration of how the green infrastructure elements for 'Planters (on structure)' have been incorporated into the project's landscape design from a Green Factor perspective.

## Green Infrastructure area: Green Roof



### Green Roof

The landscape design features 287.1 square metres of green roof area covered with lawn and predominantly indigenous shrubs and groundcover plants.

#### SPECIFIED GREEN INFRASTRUCTURE ELEMENTS

##### Green Roof

Large shrub (> 1.5m height)	Indigenous	16.52 sqm
Small shrub (< 1.5m height)	Indigenous	33.37 sqm
Ground cover	Indigenous	6.54 sqm
Large shrub (> 1.5m height)	Native	20.06 sqm
Small shrub (< 1.5m height)	Native	160.11 sqm
Small shrub (< 1.5m height)	Exotic	6.02 sqm
Ground cover	Exotic	0.6 sqm
Lawn and turf	Exotic	36.96 sqm
Soil or substrate (200 - 500mm depth)	Soil	250.2 sqm
Soil or substrate (under 200mm depth)	Soil	39.96 sqm

##### Groundcover:

GF input: groundcover / indigenous / 8.4 sqm

##### Large shrubs:

GF input: Large shrubs / indigenous / 7 sqm

Total garden bed area = 15.4 sqm

##### Lawn and turf

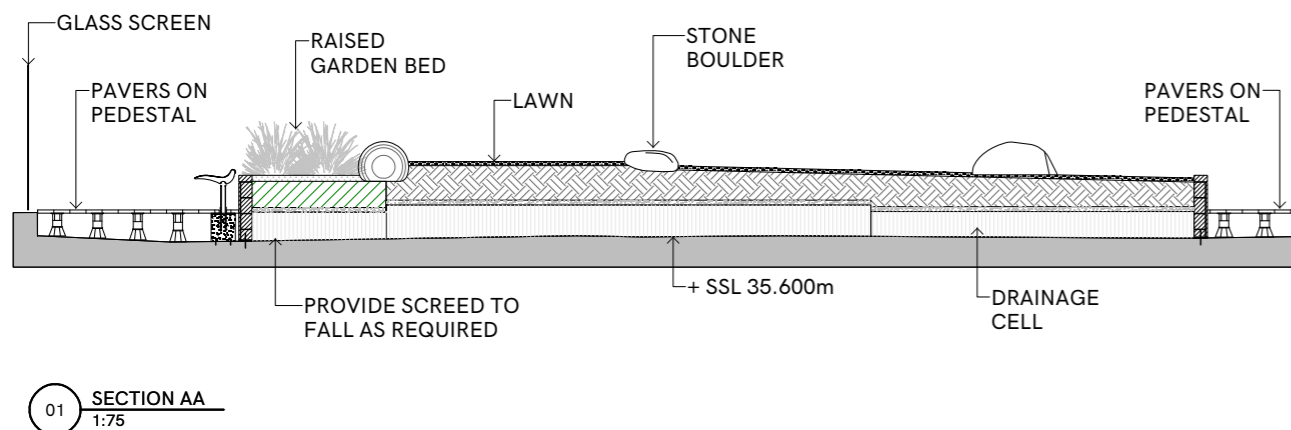
GF input: Exotic / 36.96 sqm

##### Soil area for lawn section

GF input: under 200 mm depth / 36.96 sqm



**GREEN FACTOR LEGEND**  
 GREEN ROOF 287.1sqm



QUEEN STREET BELOW

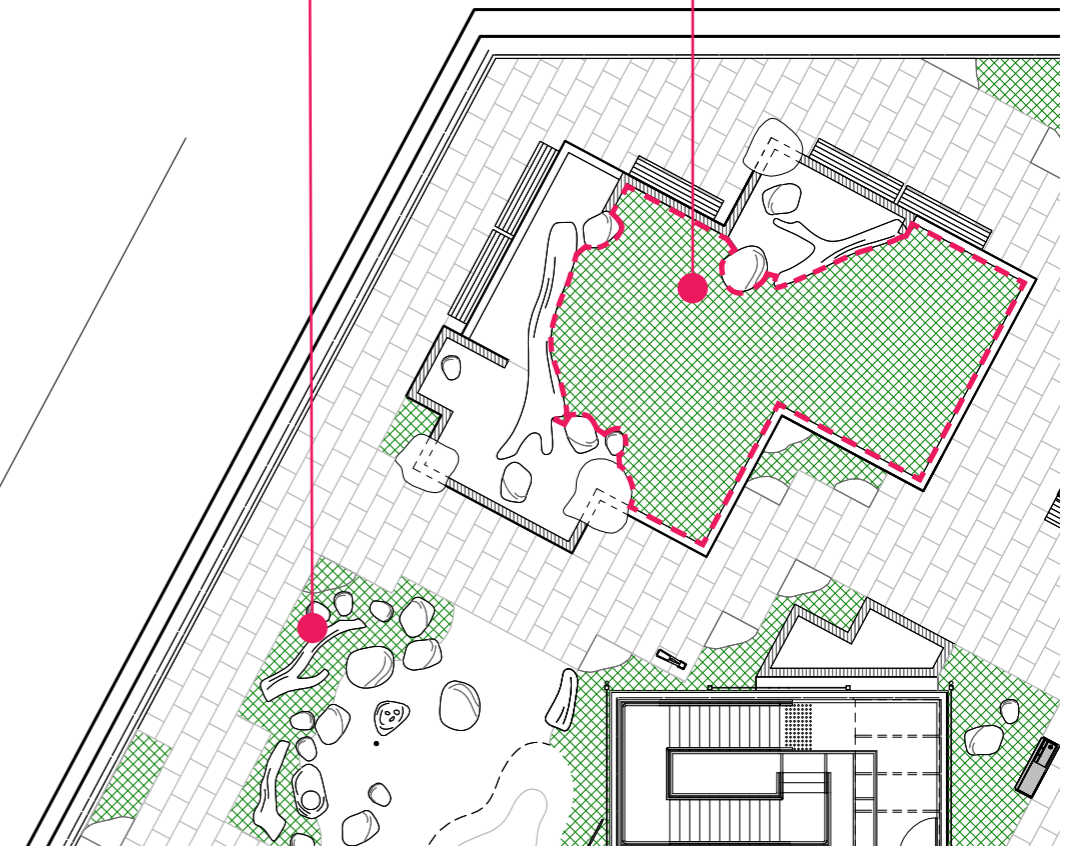


Figure 4. Illustration of how the green infrastructure elements for 'Green Roof' have been incorporated into the project's landscape design from a Green Factor perspective

## Green Infrastructure area: Green Facade



### Green Facade

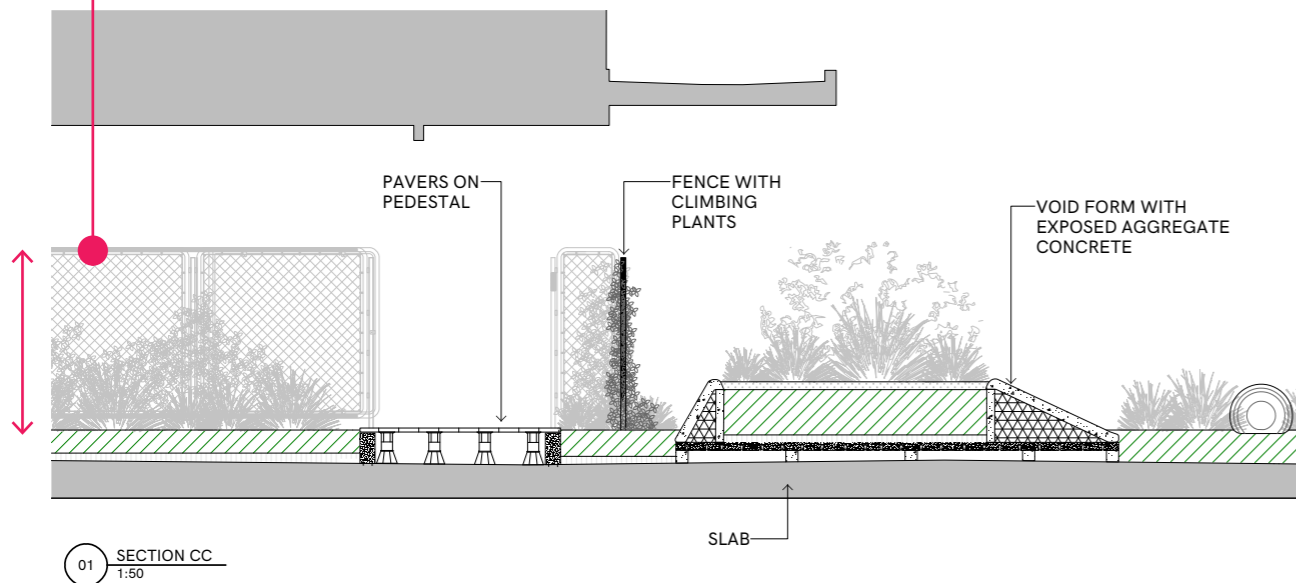
The landscape design features climbing plants growing along the fences which act as support structures.

A total of 25 climbing plants were planted, providing 74.9 square metres of vertical coverage.

#### SPECIFIED GREEN INFRASTRUCTURE ELEMENTS

Green Facade		
Climbers	Indigenous	22.46 sqm
Climbers	Native	31.44 sqm
Climbers	Exotic	20.96 sqm

The height of the fence is 1.8 m. Remember that the vertical coverage of the climbing plants cannot exceed the fence area (fence height x fence width) in any location.



### *Hardenbergia violacea* 'Snow White'

GF input: Indigenous / 1.3 sqm

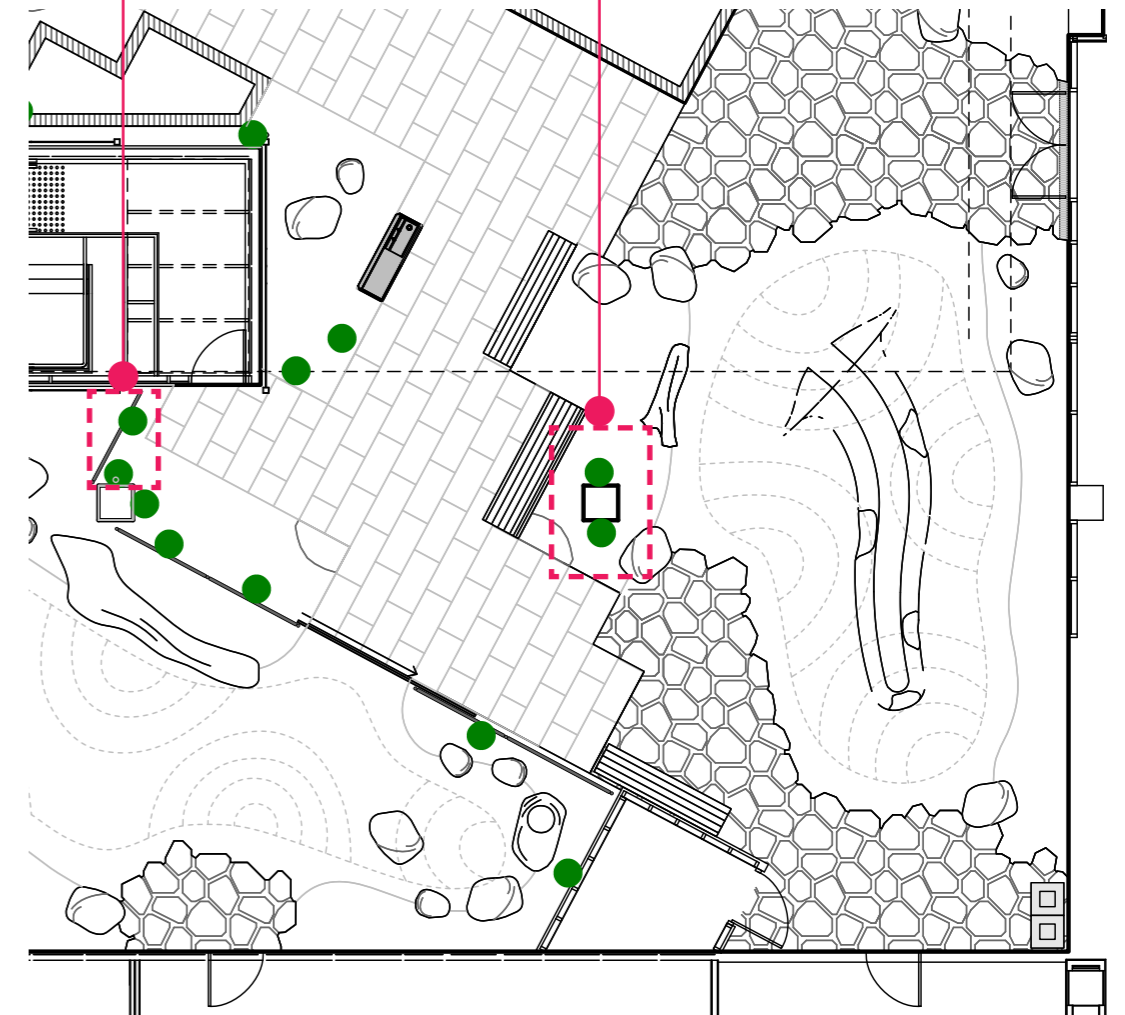
### *Parthenocissus tricuspidata* 'Lowii'

GF input: Exotic / 1.76 sqm  
Total fence area = 3.06 sqm



### *Parthenocissus tricuspidata* 'Lowii'

GF input: Exotic / 12 sqm



#### GREEN FACTOR LEGEND

● GREEN FACADE 74.9 sqm

Figure 5. Illustration of how the green infrastructure elements for a 'Green Facade' have been incorporated into the project's landscape design from a Green Factor perspective



# APPENDIX 1: EXAMPLE TOWN PLANNING LANDSCAPE PACKAGE SUBMISSION



# NARRM NGARRGU LIBRARY & FAMILY SERVICES CENTRE

141 TERRY STREET, MELBOURNE VIC

EXAMPLE GREEN FACTOR TOOL TOWN PLANNING LANDSCAPE SUBMISSION PACKAGE

LOCATION PLAN (SITE AREA = 966m<sup>2</sup>)



## PROJECT TEAM

CLIENT	CITY OF MELBOURNE
ARCHITECT	6 DEGREES
LANDSCAPE ARCHITECT	BUSH PROJECTS

## DRAWING INDEX

DWG	TITLE	SCALE	REV
	<b>COVER, LEGENDS &amp; SPECIFICATIONS</b>		
LA000	COVER PAGE	N.T.S.	DRAFT
	<b>SITE, CONTEXT &amp; DEMOLITION PLANS</b>		
LA100	LEVEL 03 LANDSCAPE SITE PLAN	1:200 @ A3	DRAFT
	<b>LANDSCAPE SURFACES &amp; SETOUT PLANS</b>		
LA200	LEVEL 03 LANDSCAPE PLAN	1:150 @ A3	DRAFT
LA201	LEVEL 03 GREEN FACTOR PLAN	1:150 @ A3	DRAFT
	<b>SECTIONS &amp; ELEVATIONS</b>		
LA600	LANDSCAPE SECTIONS - SHEET 01	1:75 @ A3	DRAFT
LA601	LANDSCAPE SECTIONS - SHEET 02	1:50 @ A3	DRAFT
	<b>PLANTING</b>		
LA700	LEVEL 03 TREE PLAN	1:150 @ A3	DRAFT
LA701	LEVEL 03 PLANTING MIX PLAN	1:150 @ A3	DRAFT
LA702	LEVEL 03 PLANTING SHRUB PLAN	1:150 @ A3	DRAFT
LA703	LEVEL 03 PLANT REPORT - SHEET 1	N.T.S.	DRAFT
LA704	LEVEL 03 PLANT REPORT - SHEET 2	N.T.S.	DRAFT
LA705	LEVEL 03 PLANT REPORT - SHEET 3	N.T.S.	DRAFT
LA706	LEVEL 03 PLANT REPORT - SHEET 4	N.T.S.	DRAFT
LA707	LEVEL 03 PLANT SCHEDULE - SHEET 1	N.T.S.	DRAFT
LA708	LEVEL 03 PLANT SCHEDULE - SHEET 2	N.T.S.	DRAFT
LA709	LEVEL 03 PLANT SCHEDULE - SHEET 3	N.T.S.	DRAFT
LA800	GREEN FACTOR SCORECARD	N.T.S.	DRAFT
	<b>ISOMETRIC, PERSPECTIVE &amp; PHOTOS</b>		
LA801	LANDSCAPE CONCEPTUAL RENDER - SHEET 1	N.T.S.	DRAFT
LA802	LANDSCAPE CONCEPTUAL RENDER - SHEET 2	N.T.S.	DRAFT
LA803	LANDSCAPE CONCEPTUAL RENDER - SHEET 3	N.T.S.	DRAFT
LA804	LANDSCAPE CONCEPTUAL RENDER - SHEET 4	N.T.S.	DRAFT

**DISCLAIMER:**  
THIS GUIDANCE DOCUMENT HAS BEEN PREPARED BY BUSH PROJECTS FOR THE CITY OF MELBOURNE. THE PURPOSE OF THIS DOCUMENT IS TO PROVIDE DEVELOPERS WITH AN EXAMPLE OF HOW A GREEN FACTOR SCORECARD SUBMISSION SHOULD BE PROVIDED WITHIN A STANDARD LANDSCAPE DOCUMENTATION SUBMISSION SUBMITTED FOR TOWN PLANNING APPROVAL.

THESE DRAWINGS ARE THE COPYRIGHT OF BUSH PROJECTS AND ARE NOT TO BE REPRODUCED WITHOUT WRITTEN APPROVAL.

**PRINT IN COLOUR**



REV	DATE	DR	CH	COMMENT

**PRELIMINARY**  
NOT FOR CONSTRUCTION

PROJECT NAME: NARRM NGARRGU LIBRARY & FAMILY SERVICES CENTRE

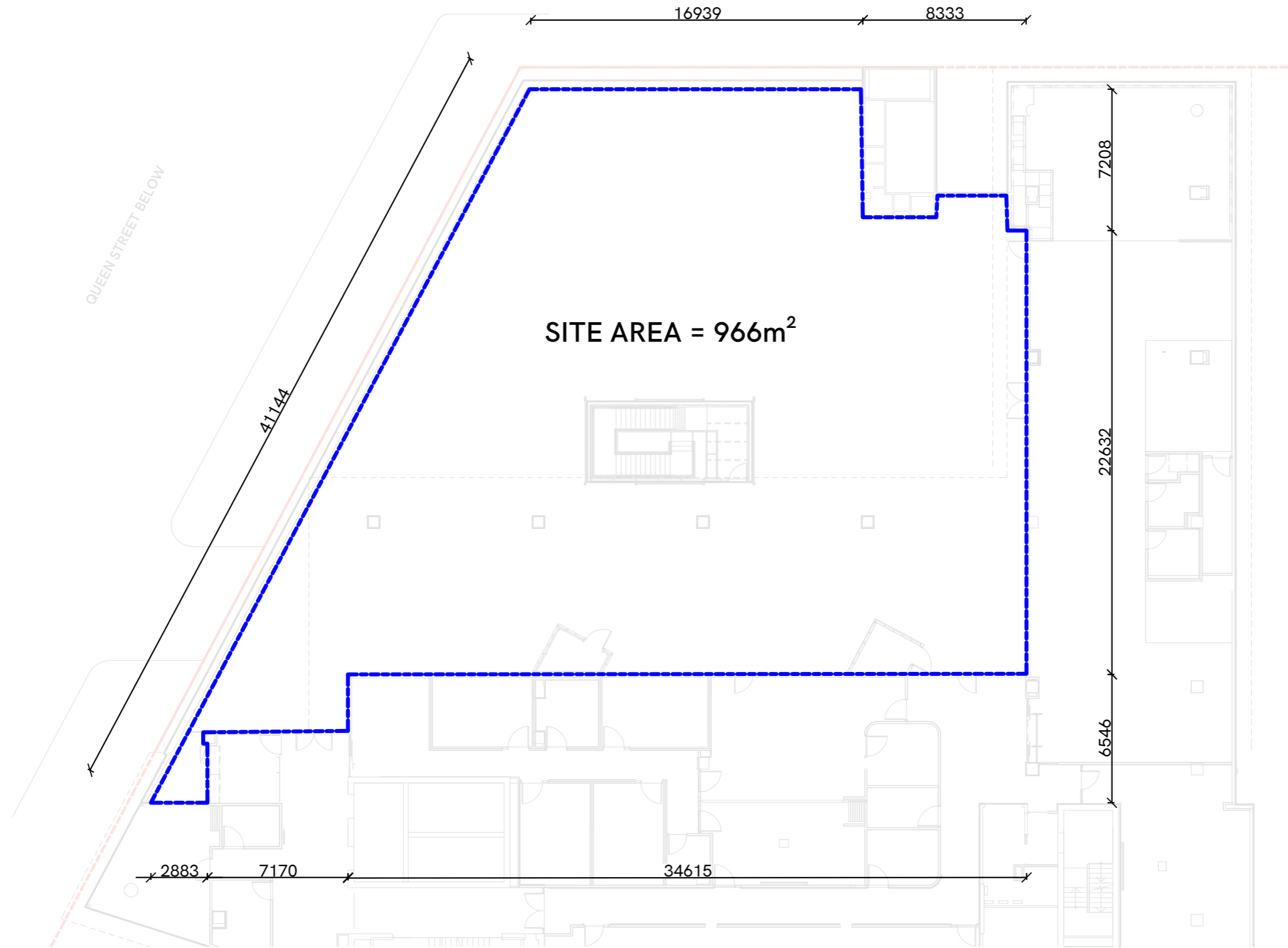
PROJECT No.: 22020

CLIENT: CITY OF MELBOURNE

DRAWING: LA000

DRAWING TITLE: COVER PAGE

1:200 @ A3 **DRAFT**



THESE DRAWINGS ARE THE  
COPYRIGHT OF BUSH PROJECTS  
AND ARE NOT TO BE REPRODUCED  
WITHOUT WRITTEN APPROVAL.

**PRINT IN COLOUR**



REV	DATE	DR	CH	COMMENT

**PRELIMINARY  
NOT FOR CONSTRUCTION**

PROJECT NAME: NARRM NGARRGU LIBRARY & FAMILY SERVICES CENTRE

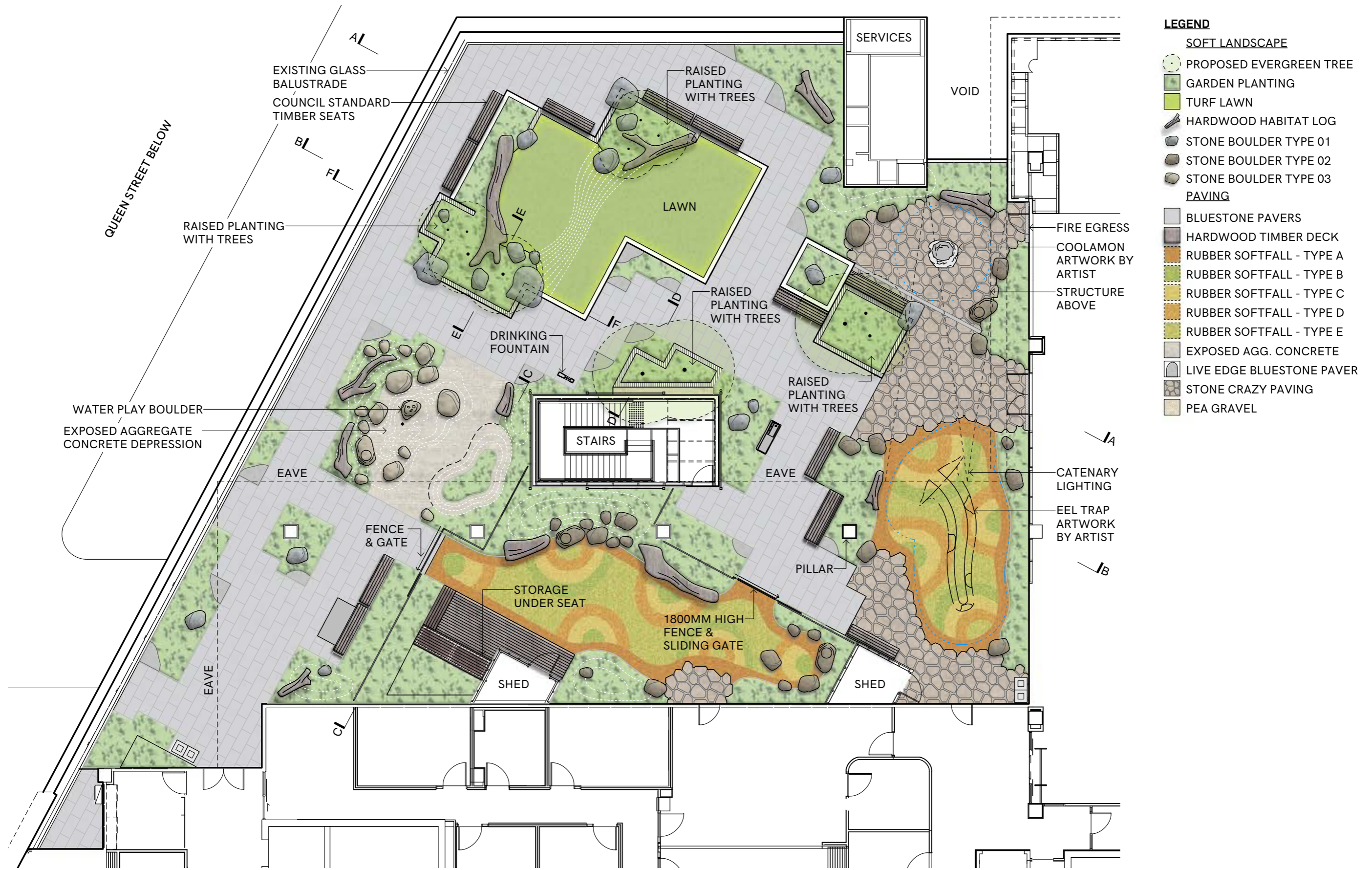
CLIENT: CITY OF MELBOURNE

DRAWING TITLE: LEVEL 03 LANDSCAPE SITE PLAN

PROJECT No.: 22020

DRAWING: LA100

1:200 @ A3 **DRAFT**



THESE DRAWINGS ARE THE COPYRIGHT OF BUSH PROJECTS AND ARE NOT TO BE REPRODUCED WITHOUT WRITTEN APPROVAL.  
**PRINT IN COLOUR**



REV	DATE	DR	CH	COMMENT

**PRELIMINARY**  
 NOT FOR CONSTRUCTION

PROJECT NAME: NARRM NGARRGU LIBRARY & FAMILY SERVICES CENTRE

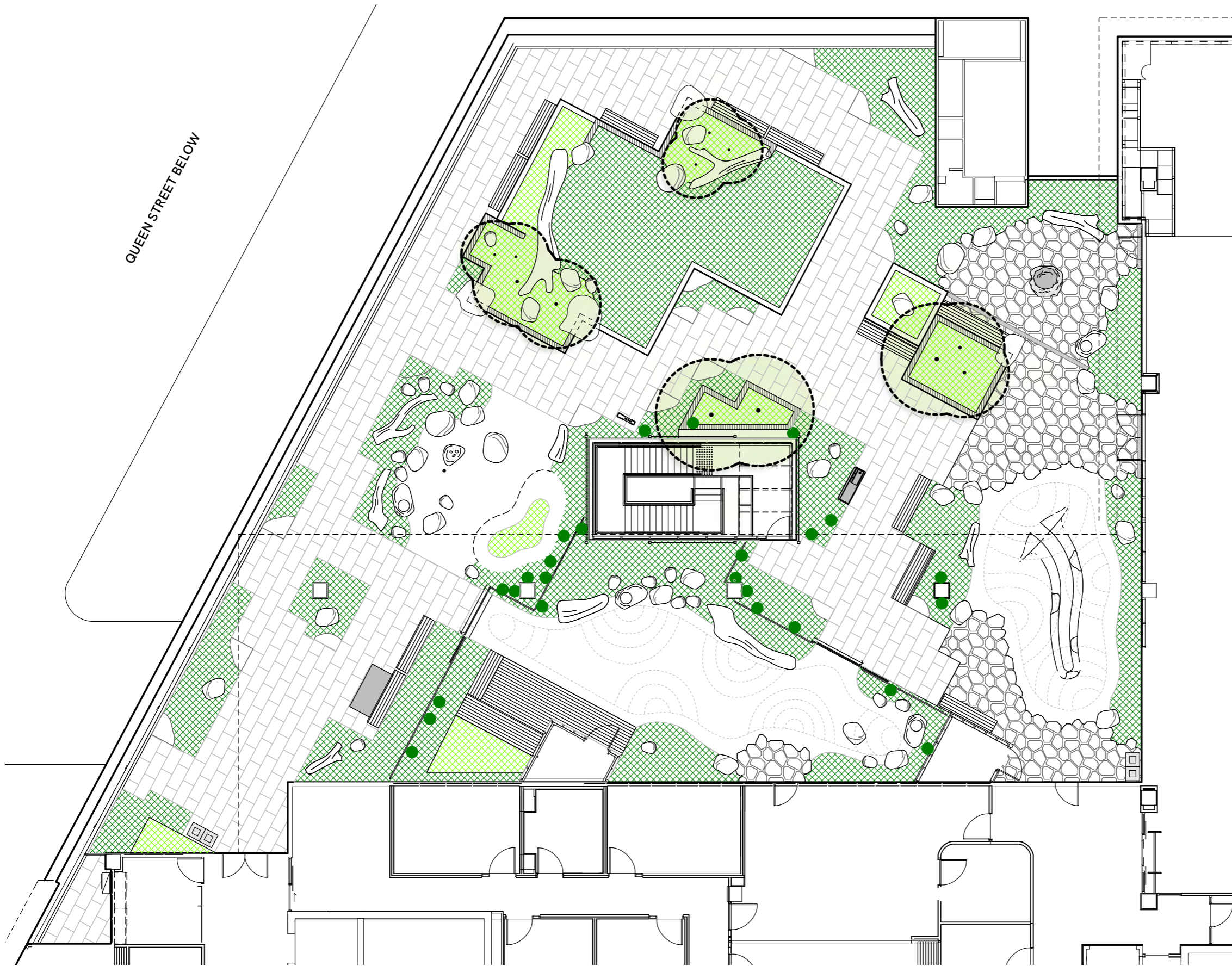
PROJECT No.: 22020

CLIENT: CITY OF MELBOURNE





DRAWING: LA200

DRAWING TITLE: LEVEL 03 LANDSCAPE PLAN

1:150 @ A3 **DRAFT**



**GREEN FACTOR LEGEND**

-  PROPOSED EVERGREEN TREE 12pcs
-  PLANTERS (ON STRUCTURE) 121.8sqm
-  GREEN ROOF 287.1sqm
-  GREEN FACADE 74.9 sqm

QUEEN STREET BELOW

THESE DRAWINGS ARE THE COPYRIGHT OF BUSH PROJECTS AND ARE NOT TO BE REPRODUCED WITHOUT WRITTEN APPROVAL.

**PRINT IN COLOUR**



REV	DATE	DR	CH	COMMENT

PRELIMINARY  
NOT FOR CONSTRUCTION

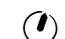
PROJECT NAME: NARRM NGARRGU LIBRARY & FAMILY SERVICES CENTRE

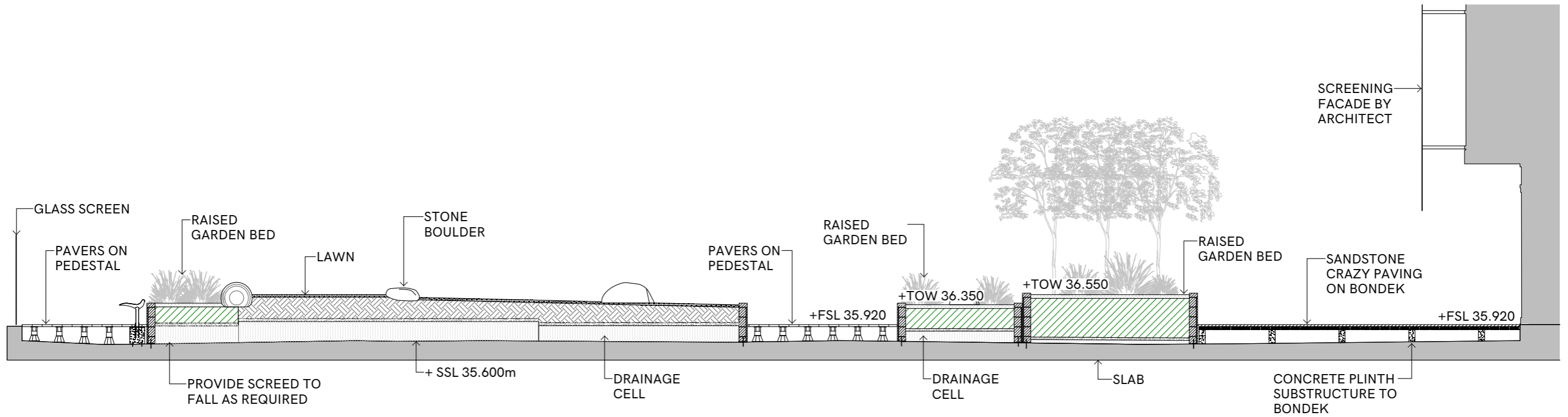
CLIENT: CITY OF MELBOURNE

DRAWING TITLE: LEVEL 03 GREEN FACTOR PLAN

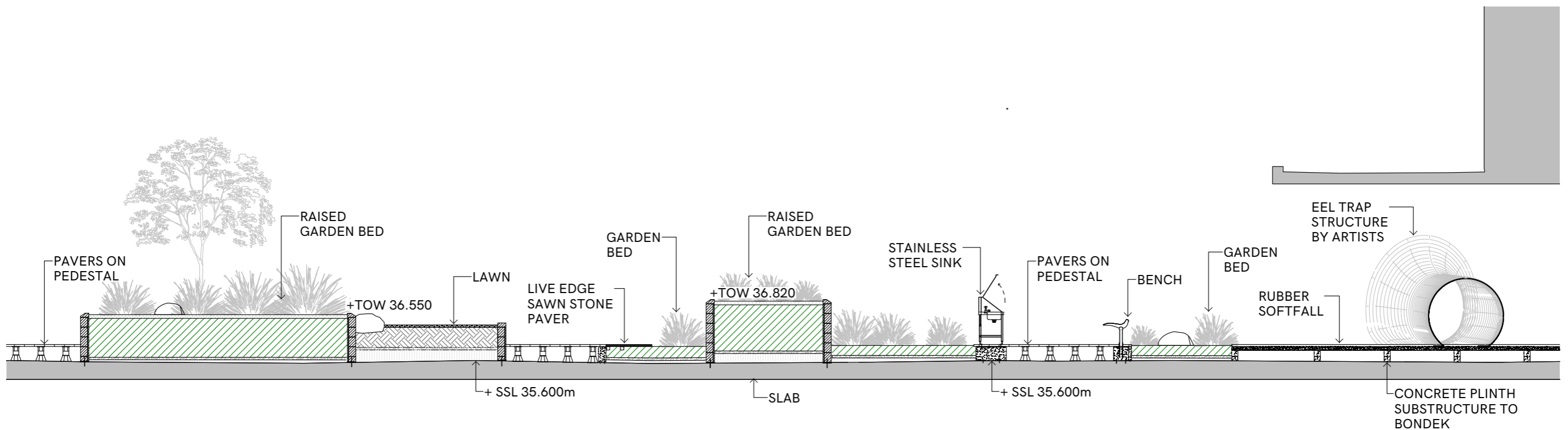
PROJECT No.: 22020

DRAWING: LA201

1:150 @ A3  **DRAFT**



01 SECTION AA  
1:75



02 SECTION BB  
1:75

THESE DRAWINGS ARE THE COPYRIGHT OF BUSH PROJECTS AND ARE NOT TO BE REPRODUCED WITHOUT WRITTEN APPROVAL.

PRINT IN COLOUR



REV	DATE	DR	CH	COMMENT

PRELIMINARY  
NOT FOR CONSTRUCTION

PROJECT NAME: NARRM NGARRGU LIBRARY & FAMILY SERVICES CENTRE

CLIENT: CITY OF MELBOURNE

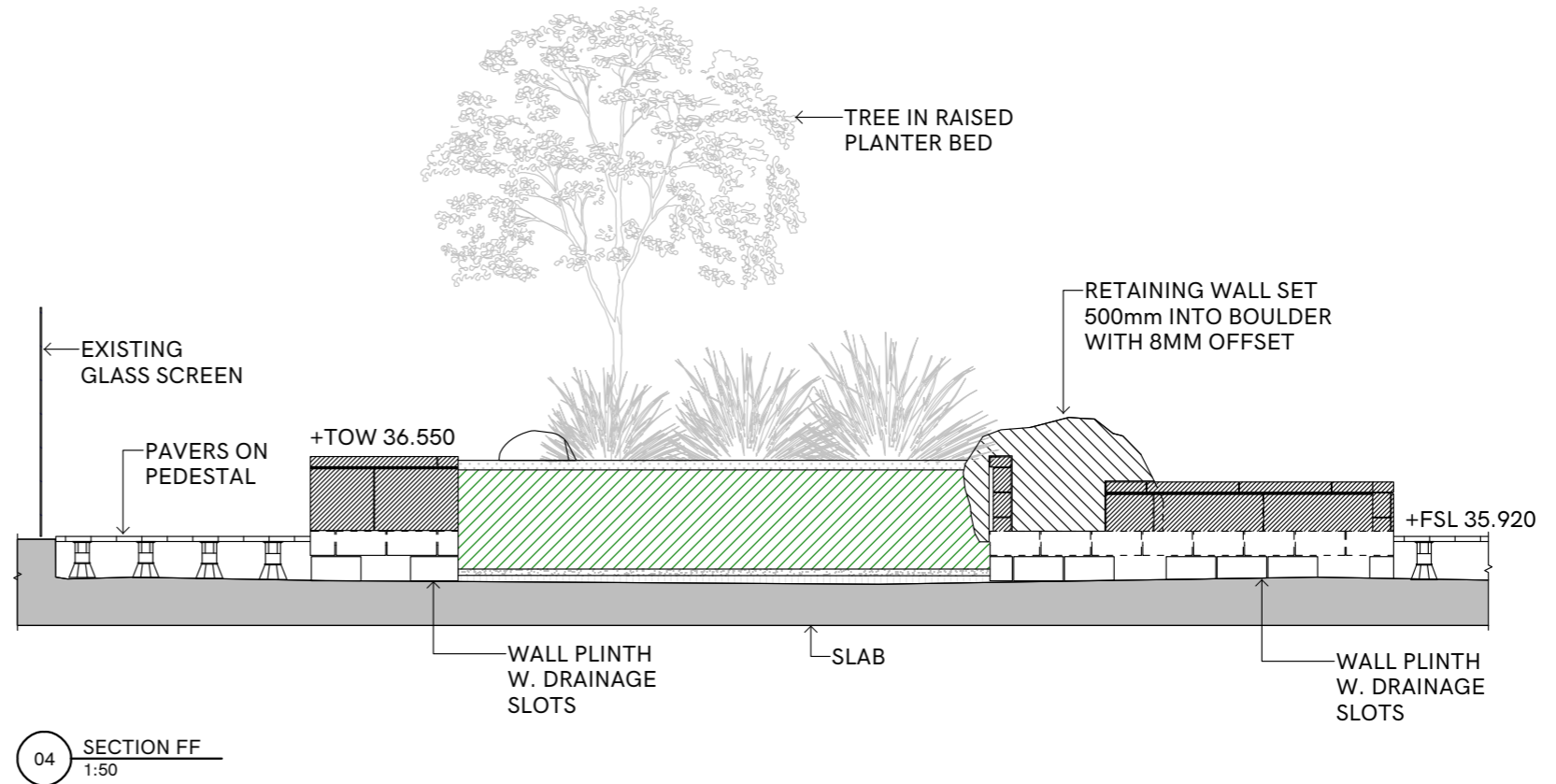
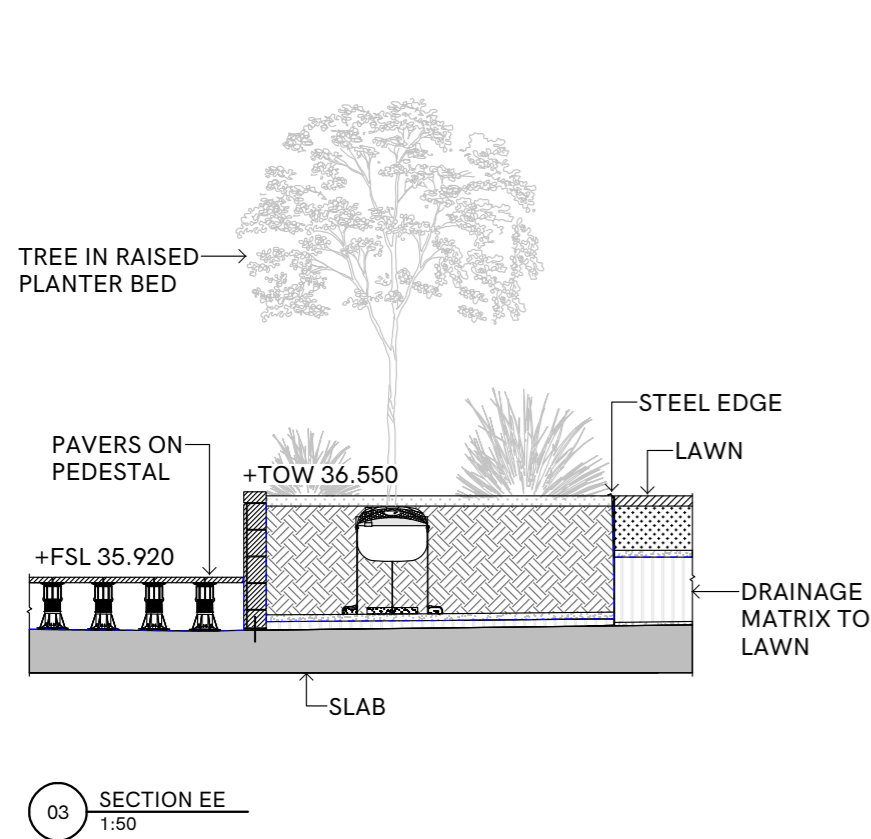
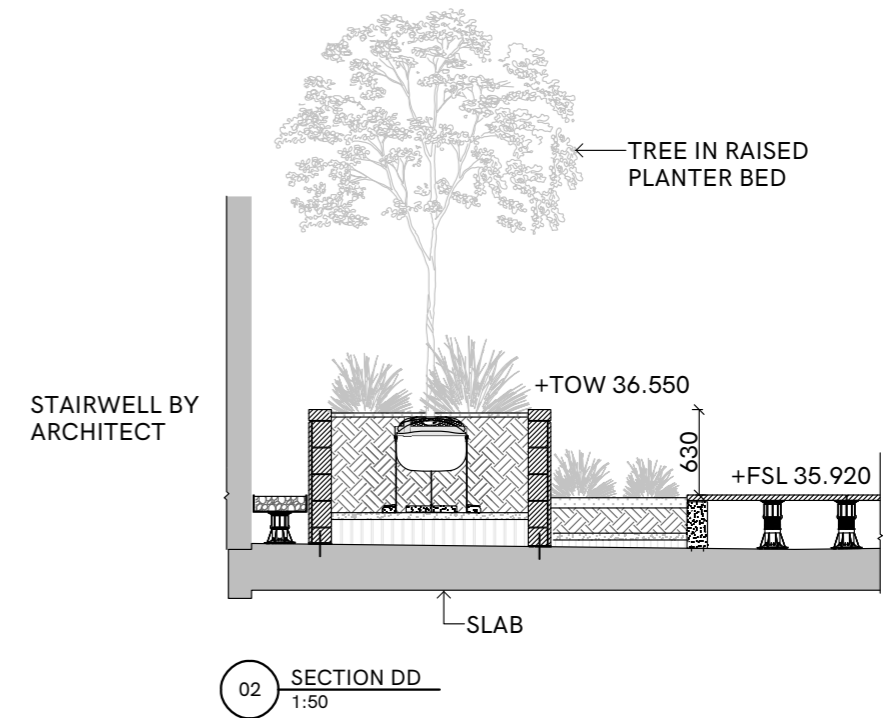
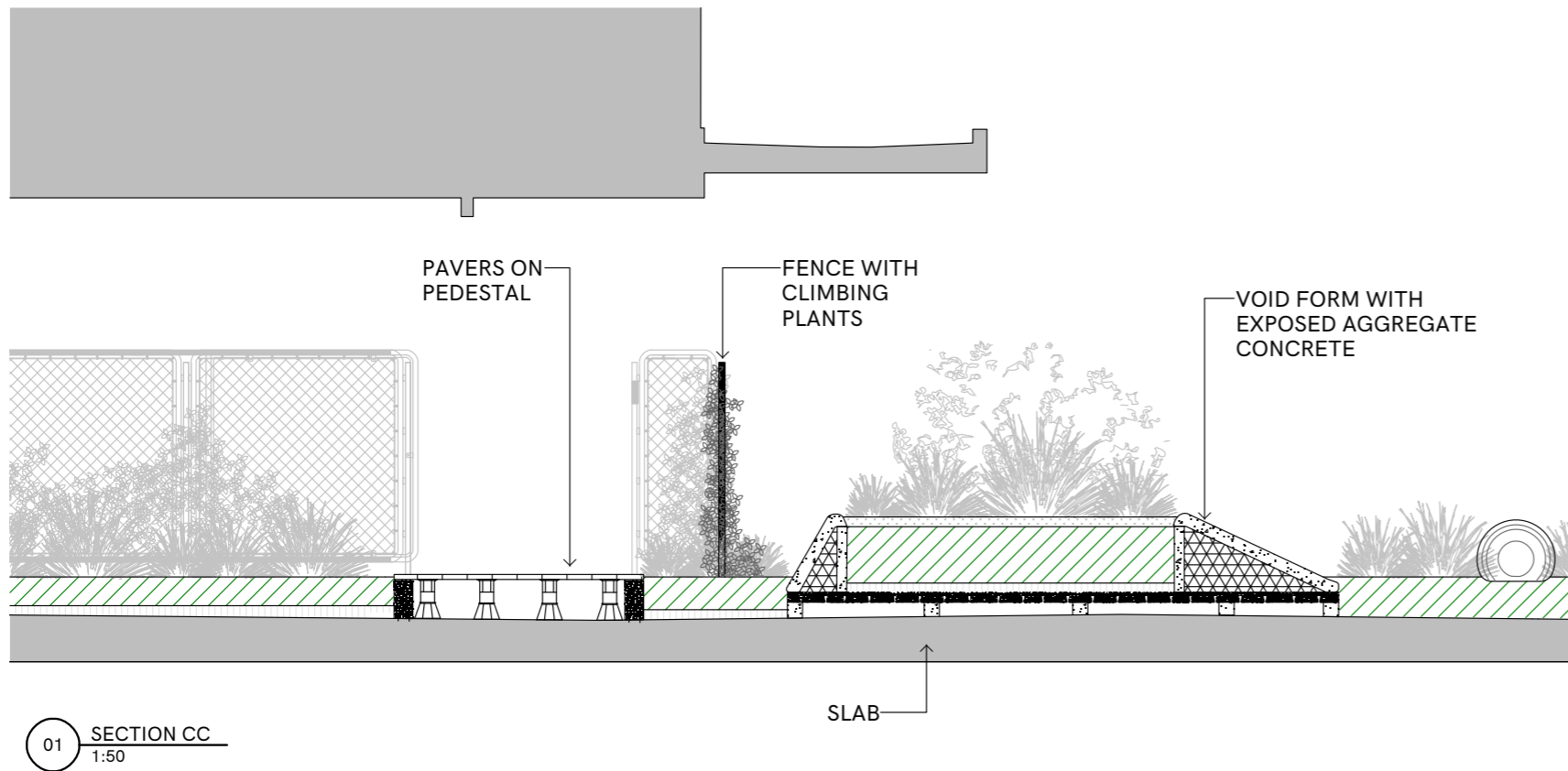
DRAWING TITLE: LANDSCAPE SECTIONS - SHEET 01

PROJECT No.: 22020

DRAWING: LA600

1:75 @ A3

DRAFT



THESE DRAWINGS ARE THE COPYRIGHT OF BUSH PROJECTS AND ARE NOT TO BE REPRODUCED WITHOUT WRITTEN APPROVAL.  
**PRINT IN COLOUR**

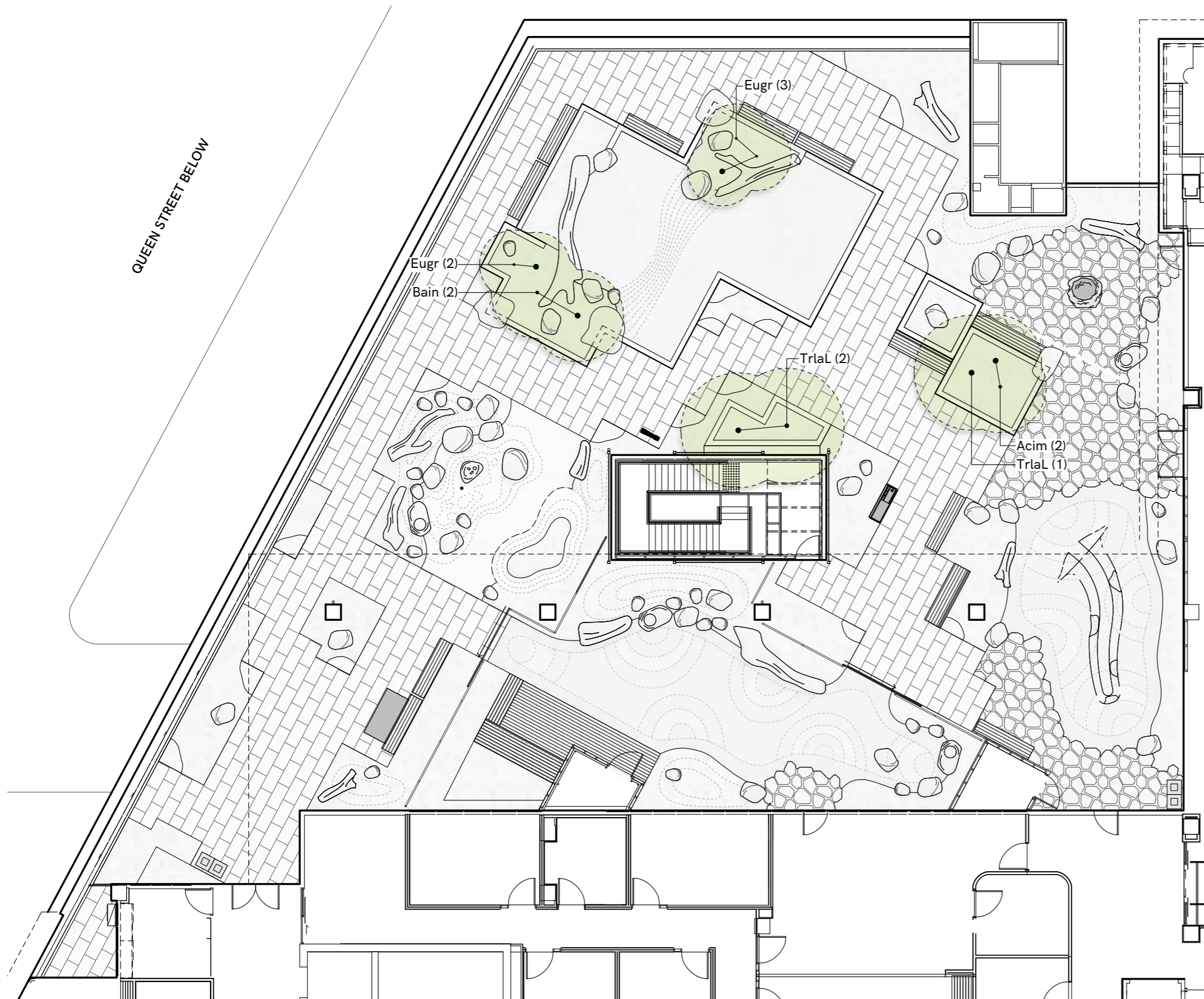


REV	DATE	DR	CH	COMMENT

**PRELIMINARY**  
NOT FOR CONSTRUCTION

PROJECT NAME: NARRM NGARRGU LIBRARY & FAMILY SERVICES CENTRE  
CLIENT: CITY OF MELBOURNE  
DRAWING TITLE: LANDSCAPE SECTIONS - SHEET 02

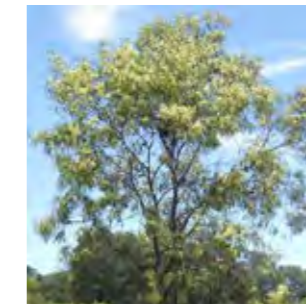
PROJECT No.: 22020  
DRAWING: LA601  
1:50 @ A3 **DRAFT**



**TREE SCHEDULE**

CODE	BOTANICAL NAME	ORIGIN	QTY
Acim	<i>Acacia implexa</i>	Indigenous	2
Bain	<i>Banksia integrifolia</i>	Indigenous	2
Eugr	<i>Eucalyptus gregsoniana</i>	Native	5
TrlaL	<i>Tristaniopsis laurina 'Luscious'</i>	Native	3

**Evergreen Trees**



Code: Acim  
 Name:  
*Acacia implexa* -  
 Lightwood  
 Height 9.0M x Spread 4.0M



Code: Bain  
 Name:  
*Banksia integrifolia* -  
 Coastal Banksia  
 Height 10.0M x Spread 4.0M



Code: Eugr  
 Name:  
*Eucalyptus gregsoniana* -  
 Mallee Snow Gum  
 Height 4.0M x Spread 3.0M



Code: TrlaL  
 Name:  
*Tristaniopsis laurina 'Luscious'* -  
 Kanooka Gum  
 Height 12.0M x Spread 5.0M

THESE DRAWINGS ARE THE  
 COPYRIGHT OF BUSH PROJECTS  
 AND ARE NOT TO BE REPRODUCED  
 WITHOUT WRITTEN APPROVAL.

**PRINT IN COLOUR**



REV DATE DR CH COMMENT

**PRELIMINARY  
 NOT FOR CONSTRUCTION**

PROJECT NAME: NARRM NGARRGU LIBRARY & FAMILY SERVICES CENTRE

PROJECT No.: 22020

CLIENT: CITY OF MELBOURNE

DRAWING: LA700

DRAWING TITLE: LEVEL 03 TREE PLAN

1:150 @ A3 **DRAFT**



SYM CODE	BOTANICAL NAME
MIX 01 Dire	<i>Dichondra repens</i>
MIX 02 Lipa Pptr	<i>Libertia paniculata</i> 'Shadow Star' <i>Pteris tremula</i>
MIX 03 Vihe	<i>Viola hederacea</i>
MIX 04 Plar Vihe	<i>Plectranthus argentatus</i> <i>Viola hederacea</i>
MIX 05 WefrF	<i>Westringia fruticosa</i> 'Flat'n'Fruity'
MIX 06 DireK HaviM	<i>Dianella revoluta</i> 'Kentlyn' <i>Hardenbergia violacea</i> 'Mini Haha'
MIX 07 PopoK RhanP	<i>Poa poiformis</i> 'Kingsdale' <i>Rhodanthe anthemoides</i> 'Paper Star'
MIX 08 LospL XehyS	<i>Lomandra longifolia</i> x <i>confertifolia</i> <i>Xerochrysum</i> 'Sundaze Everlasting'
MIX 09 RhspS	<i>Rhagodia spinescens</i> 'Silver Border'
MIX 10 BrmuP MypaM	<i>Brachyscome multifida</i> 'Pacific Cloud' <i>Myoporum parvifolium</i> 'Mallee Carpet'
MIX 11 LebrM	<i>Leucophyta brownii</i> 'Moonlight'
MIX 12 DicaG ErmaP	<i>Dianella caerulea</i> 'Goddess' <i>Eremophila maculata</i> 'Apricot'
MIX 13 LimuJ MipuG	<i>Liriope muscari</i> 'Just Right' <i>Microseris punctatum</i> 'Grandiceps'
MIX 14 LoloF Pomo Sequ	<i>Lomandra longifolia</i> 'Fine N Dandy' <i>Poa morrisii</i> <i>Senecio quadridentatus</i>
MIX 15 Camo Dicr	<i>Carpobrotus modestus</i> <i>Disphyma crassifolium</i>
MIX 16 Atse Ento	<i>Atriplex semibaccata</i> <i>Enchylaena tomentosa</i>
MIX 17 Armi Sequ ThtrT Waco	<i>Arthropodium milleflorum</i> <i>Senecio quadridentatus</i> <i>Themeda triandra</i> 'True Blue' <i>Wahlenbergia communis</i>
MIX 18 Arst Bubu Meau Mila	<i>Arthropodium stritum</i> <i>Bulbine bulbosa</i> <i>Mentha australis</i> <i>Microseris lanceolata</i>
MIX 19 LoloT Sppa	<i>Lomandra longifolia</i> 'Tanika' <i>Spyridium parvifolium</i>
MIX 20 Cala Chap DiarS Pygl	<i>Calocephalus lacteus</i> <i>Chrysocephalum apiculatum</i> <i>Dichondra argentea</i> 'Silver Falls' <i>Pycnosorus globosus</i>
MIX 21 Alca Alnu Dilo	<i>Alpina caerulea</i> <i>Alpina nutans</i> <i>Dianella longifolia</i>

THESE DRAWINGS ARE THE COPYRIGHT OF BUSH PROJECTS AND ARE NOT TO BE REPRODUCED WITHOUT WRITTEN APPROVAL.

**PRINT IN COLOUR**



REV	DATE	DR	CH	COMMENT

**PRELIMINARY  
NOT FOR CONSTRUCTION**

PROJECT NAME: NARRM NGARRGU LIBRARY & FAMILY SERVICES CENTRE

CLIENT: CITY OF MELBOURNE

DRAWING TITLE: LEVEL 03 PLANTING MIX PLAN

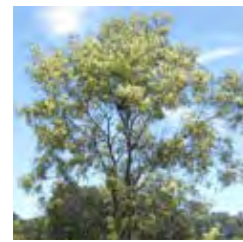
PROJECT No.: 22020

DRAWING: LA701

1:150 @ A3 **DRAFT**



## Evergreen Trees



**Code:** Acim  
**Botanical Name:**  
*Acacia implexa*  
**Common Name:**  
 Lightwood  
**Size:**  
 Height 9.0m x Spread 4.0m



**Code:** Bain  
**Botanical Name:**  
*Banksia integrifolia*  
**Common Name:**  
 Coastal Banksia  
**Size:**  
 Height 10.0m x Spread 4.0m



**Code:** Eugr  
**Botanical Name:**  
*Eucalyptus gregsoniana*  
**Common Name:**  
 Mallee Snow Gum  
**Size:**  
 Height 4.0m x Spread 3.0m



**Code:** TriaL  
**Botanical Name:**  
*Tristaniopsis laurina* 'Luscious'  
**Common Name:**  
 Kanooka Gum  
**Size:**  
 Height 12.0m x Spread 5.0m

## Shrubs



**Code:** Acac  
**Botanical Name:**  
*Acacia acinacea*  
**Common Name:**  
 Gold Dust Wattle  
**Size:**  
 Height 2.0m x Spread 3.0m



**Code:** Atci  
**Botanical Name:**  
*Atriplex cinerea*  
**Common Name:**  
 Grey Saltbush  
**Size:**  
 Height 1.5m x Spread 2.0m



**Code:** Atnu  
**Botanical Name:**  
*Atriplex nummularia*  
**Common Name:**  
 Old Man Saltbush  
**Size:**  
 Height 1.5m x Spread 2.0m



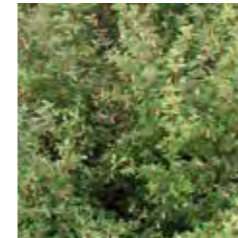
**Code:** Bama  
**Botanical Name:**  
*Banksia marginata*  
**Common Name:**  
 Silver Banksia  
**Size:**  
 Height 5.0m x Spread 2.5m



**Code:** CoalC  
**Botanical Name:**  
*Correa alba* 'Compact'  
**Common Name:**  
 White Correa  
**Size:**  
 Height 0.4m x Spread 1.2m



**Code:** CogIC  
**Botanical Name:**  
*Correa glabra* 'Coliban River'  
**Common Name:**  
 Rock Correa  
**Size:**  
 Height 1.5m x Spread 1.5m



**Code:** Core  
**Botanical Name:**  
*Correa reflexa*  
**Common Name:**  
 Common Correa  
**Size:**  
 Height 1.5m x Spread 1.5m



**Code:** CoreIT  
**Botanical Name:**  
*Correa reflexa x alba* 'Lemon Twist'  
**Common Name:**  
 Native Fuchsia  
**Size:**  
 Height 1.5m x Spread 1.0m



**Code:** ErmaP  
**Botanical Name:**  
*Eremophila maculata* 'Apricot'  
**Common Name:**  
 Spotted Emu Bush  
**Size:**  
 Height 1.5m x Spread 1.0m



**Code:** GrroS  
**Botanical Name:**  
*Grevillea rosmarinifolia*  
 'Scarlet Sprite'  
**Common Name:**  
 Grevillea  
**Size:**  
 Height 1.0m x Spread 0.8m



**Code:** HyfIL  
**Botanical Name:**  
*Hymenosporum flavum* 'Gold Nugget'  
**Common Name:**  
 Native Frangipani  
**Size:**  
 Height 1.0m x Spread 1.0m



**Code:** Laba  
**Botanical Name:**  
*Lasiopetalum baueri*  
**Common Name:**  
 Slender Velvet Bush  
**Size:**  
 Height 1.5m x Spread 1.0m



**Code:** Lela  
**Botanical Name:**  
*Leptospermum laevigatum*  
**Common Name:**  
 Coastal tea Tree  
**Size:**  
 Height 4.0m x Spread 2.5m



**Code:** LebrM  
**Botanical Name:**  
*Leucophyta brownii* 'Moonlight'  
**Common Name:**  
 Cushion Bush  
**Size:**  
 Height 0.5m x Spread 0.5m



**Code:** Mype  
**Botanical Name:**  
*Myoporum petiolatum*  
**Common Name:**  
 Sticky Boobialla  
**Size:**  
 Height 2.0m x Spread 2.0m



**Code:** Olax  
**Botanical Name:**  
*Olearia axillaris* 'Little Smokie'  
**Common Name:**  
 Coast Daisy Bush  
**Size:**  
 Height 1.0m x Spread 1.0m

THESE DRAWINGS ARE THE  
 COPYRIGHT OF BUSH PROJECTS  
 AND ARE NOT TO BE REPRODUCED  
 WITHOUT WRITTEN APPROVAL.

**PRINT IN COLOUR**



REV	DATE	DR	CH	COMMENT

**PRELIMINARY  
 NOT FOR CONSTRUCTION**

PROJECT NAME: NARRM NGARRGU LIBRARY & FAMILY SERVICES CENTRE

CLIENT: CITY OF MELBOURNE

DRAWING TITLE: LEVEL 03 PLANT REPORT - SHEET 1

PROJECT No.: 22020

DRAWING: LA703

N.T.S.

**DRAFT**

## Shrubs



**Code:** Rhpa  
**Botanical Name:**  
*Rhagodia parabolica*  
**Common Name:**  
 Fragrant Saltbush  
**Size:**  
 Height 2.5m x Spread 2.0m



**Code:** WefrN  
**Botanical Name:**  
*Westringia fruticosa* 'Naringa'  
**Common Name:**  
 Coastal Rosemary  
**Size:**  
 Height 1.5m x Spread 1.0m



**Code:** RhpaG  
**Botanical Name:**  
*Rhagodia parabolica* 'Grey Edge'  
**Common Name:**  
 Rhagodia Grey Edge  
**Size:**  
 Height 1.0m x Spread 2.0m



**Code:** WefrF  
**Botanical Name:**  
*Westringia fruticosa* 'Flat'n'Fruity'  
**Common Name:**  
 Coastal Rosemary  
**Size:**  
 Height 0.2m x Spread 0.1m



**Code:** RhspS  
**Botanical Name:**  
*Rhagodia spinescens* 'Silver Border'  
**Common Name:**  
 Creeping Salt Bush  
**Size:**  
 Height 0.5m x Spread 1.0m



**Code:** WefrJ  
**Botanical Name:**  
*Westringia fruticosa* 'Jervis Gem'  
**Common Name:**  
 Coastal Rosemary  
**Size:**  
 Height 1.2m x Spread 1.5m



**Code:** Sppa  
**Botanical Name:**  
*Spyridium parvifolium*  
**Common Name:**  
 Dusty Miller  
**Size:**  
 Height 3.0m x Spread 1.5m



**Code:** WefrZ  
**Botanical Name:**  
*Westringia fruticosa* 'Zena'  
**Common Name:**  
 Coastal Rosemary  
**Size:**  
 Height 1.5m x Spread 1.5m



**Code:** SyfrL  
**Botanical Name:**  
*Syzygium francisii* 'Little Gem'  
**Common Name:**  
 Lilly Pilly  
**Size:**  
 Height 2.0m x Spread 1.5m



**Code:** Audu  
**Botanical Name:**  
*Austromyrtus dulcis*  
**Common Name:**  
 Midgen Berry  
**Size:**  
 Height 2.0m x Spread 0.5m

## Flowering Perennial Herbs, Ferns & Palms



**Code:** Alca  
**Botanical Name:**  
*Alpina caerulea*  
**Common Name:**  
 Native ginger  
**Size:**  
 Height 1.5m x Spread 1.0m



**Code:** Bubu  
**Botanical Name:**  
*Bulbine bulbosa*  
**Common Name:**  
 Bulbine Lily  
**Size:**  
 Height 0.5m x Spread 0.5m



**Code:** Alnu  
**Botanical Name:**  
*Alpina nutans*  
**Common Name:**  
 Dwarf Cardamon Ginger  
**Size:**  
 Height 2.0m x Spread 1.0m



**Code:** Chap  
**Botanical Name:**  
*Chrysocephalum apiculatum*  
**Common Name:**  
 Common Everlasting  
**Size:**  
 Height 0.3m x Spread 0.3m



**Code:** Armi  
**Botanical Name:**  
*Arthropodium milleflorum*  
**Common Name:**  
 Vanilla Lily  
**Size:**  
 Height 1.0m x Spread 1.0m



**Code:** CybrL  
**Botanical Name:**  
*Cyathea brownii* 'Larrikin'  
**Common Name:**  
 Norfolk Tree Fern  
**Size:**  
 Height 4.0m x Spread 2.0m



**Code:** Arst  
**Botanical Name:**  
*Arthropodium stritum*  
**Common Name:**  
 Chocolate Lily  
**Size:**  
 Height 0.6m x Spread 0.1m



**Code:** Dian  
**Botanical Name:**  
*Dicksonia antarctica*  
**Common Name:**  
 Soft Tree Fern  
**Size:**  
 Height 4.5m x Spread 2.0m



**Code:** Asau  
**Botanical Name:**  
*Asplenium australasicum*  
**Common Name:**  
 Bird's Nest Fern  
**Size:**  
 Height 0.5m x Spread 1.5m



**Code:** Meau  
**Botanical Name:**  
*Mentha australis*  
**Common Name:**  
 Native River Mint  
**Size:**  
 Height 0.3m x Spread 1.0m



**Code:** BrmuP  
**Botanical Name:**  
*Brachyscome multifida*  
 'Pacific Cloud'  
**Common Name:**  
 Native Daisy  
**Size:**  
 Height 0.5m x Spread 1.5m



**Code:** Mila  
**Botanical Name:**  
*Microseris lanceolata*  
**Common Name:**  
 Yam Daisy  
**Size:**  
 Height 0.3m x Spread 0.3m

THESE DRAWINGS ARE THE  
 COPYRIGHT OF BUSH PROJECTS  
 AND ARE NOT TO BE REPRODUCED  
 WITHOUT WRITTEN APPROVAL.

**PRINT IN COLOUR**



REV	DATE	DR	CH	COMMENT

**PRELIMINARY  
 NOT FOR CONSTRUCTION**

PROJECT NAME: NARRM NGARRGU LIBRARY & FAMILY SERVICES CENTRE

PROJECT No.: 22020

CLIENT: CITY OF MELBOURNE

DRAWING: LA704

DRAWING TITLE: LEVEL 03 PLANT REPORT - SHEET 2

N.T.S.

**DRAFT**



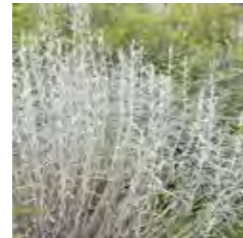
**Code:** MipuG  
**Botanical Name:**  
*Microseris punctatum 'Grandiceps'*  
**Common Name:**  
 Elk Fern  
**Size:**  
 Height 0.6m x Spread 0.6m



**Code:** RhanP  
**Botanical Name:**  
*Rhodanthe anthemoides 'Paper Star'*  
**Common Name:**  
 Chamomile Sunray  
**Size:**  
 Height 0.4m x Spread 0.5m



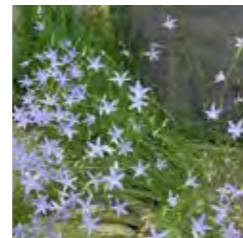
**Code:** Plar  
**Botanical Name:**  
*Plectranthus argentatus*  
**Common Name:**  
 Silver Plectranthus  
**Size:**  
 Height 1.0m x Spread 4.0m



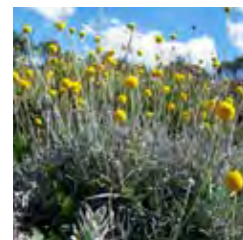
**Code:** Sequ  
**Botanical Name:**  
*Senecio quadridentatus*  
**Common Name:**  
 Cotton Fireweed  
**Size:**  
 Height 1.0m x Spread 1.0m



**Code:** Pptr  
**Botanical Name:**  
*Pteris tremula*  
**Common Name:**  
 Tender Brake Fern  
**Size:**  
 Height 0.8m x Spread 0.5m



**Code:** Waco  
**Botanical Name:**  
*Wahlenbergia communis*  
**Common Name:**  
 Tufted Bluebell  
**Size:**  
 Height 0.4m x Spread 0.2m



**Code:** Pygl  
**Botanical Name:**  
*Pycnosorus globosus*  
**Common Name:**  
 Billy Buttons  
**Size:**  
 Height 0.3m x Spread 0.3m

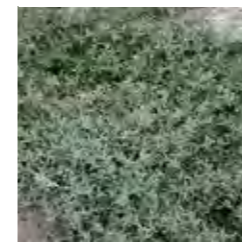


**Code:** Cala  
**Botanical Name:**  
*Calocephalus lacteus*  
**Common Name:**  
 Milky Beauty Heads  
**Size:**  
 Height 0.2m x Spread 0.3m



**Code:** Rhex  
**Botanical Name:**  
*Rhaphis excelsa*  
**Common Name:**  
 Rhaphis Palm  
**Size:**  
 Height 2.0m x Spread 2.0m

## Groundcovers



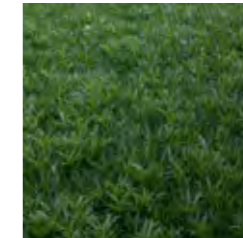
**Code:** Atse  
**Botanical Name:**  
*Atriplex semibaccata*  
**Common Name:**  
 Creeping Saltbush  
**Size:**  
 Height 0.4m x Spread 1.0m



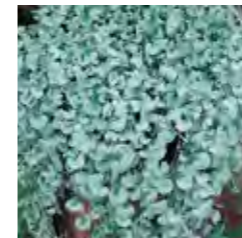
**Code:** Ento  
**Botanical Name:**  
*Enchylaena tomentosa*  
**Common Name:**  
 Ruby Saltbush  
**Size:**  
 Height 0.5m x Spread 1.0m



**Code:** Camo  
**Botanical Name:**  
*Carpobrotus modestus*  
**Common Name:**  
 Inland Pig Face  
**Size:**  
 Height 0.1m x Spread 2.0m



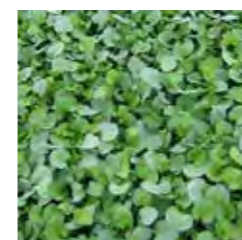
**Code:** MypaM  
**Botanical Name:**  
*Myoporum parvifolium*  
 'Mallee Carpet'  
**Common Name:**  
 Creeping boobialla  
**Size:**  
 Height 0.2m x Spread 2.0m



**Code:** DiarS  
**Botanical Name:**  
*Dichondra argentea 'Silver Falls'*  
**Common Name:**  
 Dichondra  
**Size:**  
 Height 0.2m x Spread 1.0m



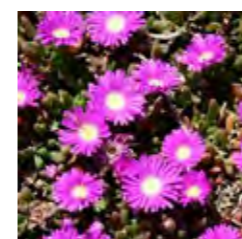
**Code:** Vihe  
**Botanical Name:**  
*Viola hederacea*  
**Common Name:**  
 Native Violet  
**Size:**  
 Height 0.2m x Spread 0.2m



**Code:** Dire  
**Botanical Name:**  
*Dichondra repens*  
**Common Name:**  
 Kidney Weed  
**Size:**  
 Height 0.2m x Spread 0.2m



**Code:** XehyS  
**Botanical Name:**  
*Xerochrysum hybrid*  
 'Sundaze Everlasting Gold'  
**Common Name:**  
 Everlasting Daisy  
**Size:**  
 Height 0.3m x Spread 0.5m



**Code:** Dicr  
**Botanical Name:**  
*Disphyma crassifolium*  
**Common Name:**  
 Pig Face  
**Size:**  
 Height 0.2m x Spread 0.5m



**Code:** HaviM  
**Botanical Name:**  
*Hardenbergia violacea 'Mini Haha'*  
**Common Name:**  
 Dwarf Hardenbergia  
**Size:**  
 Height 0.2m x Spread 1.0m

THESE DRAWINGS ARE THE  
 COPYRIGHT OF BUSH PROJECTS  
 AND ARE NOT TO BE REPRODUCED  
 WITHOUT WRITTEN APPROVAL.

PRINT IN COLOUR



REV	DATE	DR	CH	COMMENT

PRELIMINARY  
 NOT FOR CONSTRUCTION

PROJECT NAME: NARRM NGARRGU LIBRARY & FAMILY SERVICES CENTRE

PROJECT No.: 22020

CLIENT: CITY OF MELBOURNE

DRAWING: LA705

DRAWING TITLE: LEVEL 03 PLANT REPORT - SHEET 3

N.T.S.

DRAFT

## Grasses & Grass-like Forms



**Code:** DicaG  
**Botanical Name:**  
*Dianella caerulea* 'Goddess'  
**Common Name:**  
 Blue Flax Lily  
**Size:**  
 Height 0.5m x Spread 0.5m



**Code:** LimuJ  
**Botanical Name:**  
*Liriope muscari* 'Just Right'  
**Common Name:**  
 Turf Lily  
**Size:**  
 Height 0.5m x Spread 0.5m



**Code:** Dilo  
**Botanical Name:**  
*Dianella longifolia*  
**Common Name:**  
 Pale Flax Lily  
**Size:**  
 Height 1.0m x Spread 0.4m



**Code:** LoloF  
**Botanical Name:**  
*Lomandra longifolia* 'Fine N Dandy'  
**Common Name:**  
 Mat Rush  
**Size:**  
 Height 1.5m x Spread 1.5m



**Code:** DireK  
**Botanical Name:**  
*Dianella revoluta* 'Kentlyn'  
**Common Name:**  
 Native Flax  
**Size:**  
 Height 0.8m x Spread 0.5m



**Code:** LoloT  
**Botanical Name:**  
*Lomandra longifolia* 'Tanika'  
**Common Name:**  
 Mat Rush  
**Size:**  
 Height 0.6m x Spread 0.6m



**Code:** DireL  
**Botanical Name:**  
*Dianella revoluta* 'Little Rev'  
**Common Name:**  
 Dianella Little Rev  
**Size:**  
 Height 0.3m x Spread 0.3m



**Code:** LospL  
**Botanical Name:**  
*Lomandra longifolia x confertifolia*  
*spp. pallida* 'Lime Tuff'  
**Common Name:**  
 Mat Rush  
**Size:**  
 Height 0.4m x Spread 0.4m



**Code:** Lipa  
**Botanical Name:**  
*Libertia paniculata* 'Shadow Star'  
**Common Name:**  
 Grass Flag  
**Size:**  
 Height 0.5m x Spread 0.5m



**Code:** PolaE  
**Botanical Name:**  
*Poa labillardieri* 'Eskdale'  
**Common Name:**  
 Blue Tussock Grass  
**Size:**  
 Height 0.5m x Spread 0.5m



**Code:** Pomo  
**Botanical Name:**  
*Poa morrisii*  
**Common Name:**  
 Velvet Tussock Grass  
**Size:**  
 Height 0.6m x Spread 0.6m



**Code:** PopoK  
**Botanical Name:**  
*Poa poiformis* 'Kingsdale'  
**Common Name:**  
 Tussock Grass  
**Size:**  
 Height 0.5m x Spread 0.5m



**Code:** ThtrT  
**Botanical Name:**  
*Themeda triandra* 'True Blue'  
**Common Name:**  
 Kangaroo Grass  
**Size:**  
 Height 1.0m x Spread 0.5m



**Code:** Xahy  
**Botanical Name:**  
*Xanthorrhoea hybrid supergrass*  
**Common Name:**  
 Grass Tree  
**Size:**  
 Height 2.0m x Spread 2.0m

## Climbers



**Code:** Apre  
**Botanical Name:**  
*Aphanopetalum resinosa*  
**Common Name:**  
 Gum Vine  
**Size:**  
 Height 2.0m x Spread 0.3m



**Code:** HaviW  
**Botanical Name:**  
*Hardenbergia violacea* 'Snow White'  
**Common Name:**  
 Hardenbergia  
**Size:**  
 Height 3.0m x Spread 1.5m



**Code:** Papa  
**Botanical Name:**  
*Pandorea pandorana*  
**Common Name:**  
 Wonga Wonga Vine  
**Size:**  
 Height 0.2m x Spread 0.2m



**Code:** Papa  
**Botanical Name:**  
*Parthenocissus tricuspidata* 'lowii'  
**Common Name:**  
 Japanese Creeper  
**Size:**  
 Height 3.0m x Spread 2.0m

THESE DRAWINGS ARE THE  
 COPYRIGHT OF BUSH PROJECTS  
 AND ARE NOT TO BE REPRODUCED  
 WITHOUT WRITTEN APPROVAL.

**PRINT IN COLOUR**



REV	DATE	DR	CH	COMMENT

**PRELIMINARY**  
 NOT FOR CONSTRUCTION

PROJECT NAME: NARRM NGARRGU LIBRARY & FAMILY SERVICES CENTRE

PROJECT No.: 22020

CLIENT: CITY OF MELBOURNE

DRAWING: LA706

DRAWING TITLE: LEVEL 03 PLANT REPORT - SHEET 4

N.T.S.

**DRAFT**

Green Factor Plant Schedule

CODE	BOTANICAL NAME	COMMON NAME	GREEN FACTOR VEGETATION TYPE	ORIGIN	MATURE HEIGHT (M)	MATURE WIDTH (M)	IN GROUND (EXISTING) QUANTITY	IN GROUND (NEW) QUANTITY	GREEN WALL QUANTITY	GREEN FACADE QUANTITY	PLANTERS (ON STRUCTURE) QUANTITY	GREEN ROOF QUANTITY
<b>Evergreen trees</b>												
Acim	<i>Acacia implexa</i>	Lightwood	Small tree	Indigenous	9	4					2	
Bain	<i>Banksia integrifolia</i>	Coastal Banksia	Small tree	Indigenous	10	4					2	
Eugr	<i>Eucalyptus gregsoniana</i>	Mallee Snow Gum	Small tree	Native	4	3					5	
TrlaL	<i>Tristaniopsis lauirna</i> 'Luscious'	Kanooka Gum	Small tree	Native	12	5					3	
<b>Shrubs</b>												
Acac	<i>Acacia acinacea</i>	Gold Dust Wattle	Large shrub	Indigenous	2	3						4
Atci	<i>Atriplex cinerea</i>	Grey Saltbush	Large shrub	Indigenous	1.5	2						5
Atnu	<i>Atriplex nummularia</i>	Old Man Saltbush	Large shrub	Native	1.5	2					4	6
Audu	<i>Austromyrtus dulcis</i>	Midgen Berry	Large shrub	Native	2	0.5					4	11
Bama	<i>Banksia marginata</i>	Silver Banksia	Large shrub	Indigenous	5	2.5					9	
CoalC	<i>Correa alba</i> 'Compact'	White Correa	Groundcover	Indigenous	0.4	1.2						3
CoglC	<i>Correa glabra</i> 'Coliban River'	Rock Correa	Large shrub	Indigenous	1.5	1.5						14
CorelT	<i>Correa reflexa x alba</i> 'Lemon Twist'	Native Fuchsia	Large shrub	Indigenous	1.5	1					3	5
Core	<i>Correa reflexa</i>	Common Correa	Large shrub	Indigenous	1.5	1.5					2	
ErmaP	<i>Eremophila maculata</i> 'Apricot'	Spotted Emu Bush	Large shrub	Native	1.5	1					9	20
GrroS	<i>Grevillea rosmarinifolia</i> 'Scarlet Sprite'	Grevillea	Small shrub	Indigenous	1	0.8					3	2
HyfIL	<i>Hymenosporum flavum</i> 'Gold Nugget'	Native Frangipani	Small shrub	Native	1	1						15
Laba	<i>Lasiopetalum baueri</i>	Slender Velvet Bush	Large shrub	Indigenous	1.5	1						9
Lela	<i>Leptospermum laevigatum</i>	Coastal tea Tree	Large shrub	Indigenous	4	2.5					1	2
LebrM	<i>Leucophyta brownii</i> 'Moonlight'	Cushion Bush	Small shrub	Indigenous	0.5	0.5						35
Mype	<i>Myoporum petiolatum</i>	Sticky Boobialla	Large shrub	Indigenous	2	2					1	
Olax	<i>Olearia axillaris</i> 'Little Smokie'	Coast Daisy Bush	Small shrub	Indigenous	1	1						10
RhpaG	<i>Rhagodia parabolica</i> 'Grey Edge'	Rhagodia Grey Edge	Small shrub	Native	1	2					1	
Rhpa	<i>Rhagodia parabolica</i>	Fragrant Saltbush	Large shrub	Native	2.5	2					4	12
RhspS	<i>Rhagodia spinescens</i> 'Silver Border'	Creeping Salt Bush	Small shrub	Indigenous	0.5	1						48
Sppa	<i>Spyridium parvifolium</i>	Dusty Miller	Large shrub	Native	3	1.5					10	6
SyfrL	<i>Syzygium francisii</i> 'Little Gem'	Lilly Pilly	Large shrub	Native	2	1.5					7	5
WefrN	<i>Westringia fruticosa</i> 'Naringa'	Coastal Rosemary	Large shrub	Native	1.5	1						5
WefrF	<i>Westringia fruticosa</i> 'Flat'n'Fruity'	Coastal Rosemary	Groundcover	Native	0.2	0.5						7
WefrJ	<i>Westringia fruticosa</i> 'Jervis Gem'	Coastal Rosemary	Small shrub	Native	1.2	1.5					2	3
WefrZ	<i>Westringia fruticosa</i> 'Zena'	Coastal Rosemary	Large shrub	Native	1.5	1.5						11

THESE DRAWINGS ARE THE COPYRIGHT OF BUSH PROJECTS AND ARE NOT TO BE REPRODUCED WITHOUT WRITTEN APPROVAL.

**PRINT IN COLOUR**



REV	DATE	DR	CH	COMMENT

**PRELIMINARY  
NOT FOR CONSTRUCTION**

PROJECT NAME: NARRM NGARRGU LIBRARY & FAMILY SERVICES CENTRE

PROJECT No.: 22020

CLIENT: CITY OF MELBOURNE

DRAWING: LA707

DRAWING TITLE: LEVEL 03 PLANT SCHEDULE - SHEET 1

N.T.S.

**DRAFT**

CODE	BOTANICAL NAME	COMMON NAME	GREEN FACTOR VEGETATION TYPE	ORIGIN	MATURE HEIGHT (M)	MATURE WIDTH (M)	IN GROUND (EXISTING) QUANTITY	IN GROUND (NEW) QUANTITY	GREEN WALL QUANTITY	GREEN FACADE QUANTITY	PLANTERS (ON STRUCTURE) QUANTITY	GREEN ROOF QUANTITY
<b>Climbers</b>												
AprE	<i>Aphanopetalum resinosum</i>	Gum Vine	Climber	Native	2	2				9		
HaviW	<i>Hardenbergia violacea 'Snow White'</i>	Hardenbergia	Climber	Indigenous	3	1.5				8		
Papa	<i>Pandorea pandorana</i>	Wonga Wonga Vine	Climber	Indigenous	2	2				2		
PatrL	<i>Parthenocissus tricuspidata 'Lowii'</i>	Japanese Creeper	Climber	Exotic	3	2				6		
<b>Flowering perennial herbs, ferns &amp; palms</b>												
Alca	<i>Alpina caerulea</i>	Native ginger	Large shrub	Native	1.5	1						1
Alnu	<i>Alpinia nutans</i>	Dwarf Cardamon Ginger	Large shrub	Native	2	1						3
Armi	<i>Arthropodium milleflorum</i>	Vanilla Lily	Small shrub	Indigenous	1	1					4	12
Arst	<i>Arthropodium stritum</i>	Chocolate Lily	Small shrub	Indigenous	0.6	0.1						8
Asau	<i>Asplenium australasicum</i>	Bird's Nest Fern	Small shrub	Native	0.5	1.5						3
BrmuP	<i>Brachyscome multifida 'Pacific Cloud'</i>	Native Daisy	Groundcover	Indigenous	0.3	0.5					6	30
Bubu	<i>Bulbine bulbosa</i>	Bulbine Lily	Small shrub	Indigenous	0.5	0.5						8
Cala	<i>Calocephalus lacteus</i>	Milky Beauty Heads	Groundcover	Indigenous	0.2	0.3					30	9
Chap	<i>Chrysocephalum apiculatum</i>	Common Everlasting	Groundcover	Indigenous	0.3	0.3					58	8
CybrL	<i>Cyathea brownii 'Larrikin'</i>	Norfolk Tree Fern	Large shrub	Native	4	2						1
Dian	<i>Dicksonia antartica</i>	Soft Tree Fern	Large shrub	Indigenous	4.5	2						3
Meau	<i>Mentha australis</i>	Native River Mint	Groundcover	Indigenous	0.3	1						8
Mila	<i>Microseris lanceolata</i>	Yam Daisy	Groundcover	Indigenous	0.3	0.3						8
MipuG	<i>Microseris punctatum 'Grandiceps'</i>	Elk Fern	Small shrub	Native	0.6	0.6						20
Plar	<i>Plectranthus argentatus</i>	Silver Plectranthus	Small shrub	Native	1	4						80
Pttr	<i>Pteris tremula</i>	Tender Brake Fern	Small shrub	Indigenous	0.8	0.5						18
Pygl	<i>Pycnosorus globosus</i>	Billy Buttons	Groundcover	Indigenous	0.3	0.3					42	11
Rhex	<i>Rhaphis excelsa</i>	Rhapis Palm	Large shrub	Exotic	2	2					1	
RhanP	<i>Rhodanthe anthemoides 'Paper Star'</i>	Chamomile Sunray	Groundcover	Indigenous	0.4	0.5						11
Sequ	<i>Senecio quadridentatus</i>	Cotton Fireweed	Small shrub	Indigenous	1	1					9	2
Waco	<i>Wahlenbergia communis</i>	Tufted Bluebell	Groundcover	Indigenous	0.4	0.2					8	28

THESE DRAWINGS ARE THE COPYRIGHT OF BUSH PROJECTS AND ARE NOT TO BE REPRODUCED WITHOUT WRITTEN APPROVAL.

**PRINT IN COLOUR**



REV	DATE	DR	CH	COMMENT

**PRELIMINARY**  
NOT FOR CONSTRUCTION

PROJECT NAME: NARRM NGARRGU LIBRARY & FAMILY SERVICES CENTRE

PROJECT No.: 22020

CLIENT: CITY OF MELBOURNE

DRAWING: LA708

DRAWING TITLE: LEVEL 03 PLANT SCHEDULE - SHEET 2

N.T.S.

**DRAFT**

CODE	BOTANICAL NAME	COMMON NAME	GREEN FACTOR VEGETATION TYPE	ORIGIN	MATURE HEIGHT (M)	MATURE WIDTH (M)	IN GROUND (EXISTING) QUANTITY	IN GROUND (NEW) QUANTITY	GREEN WALL QUANTITY	GREEN FACADE QUANTITY	PLANTERS (ON STRUCTURE) QUANTITY	GREEN ROOF QUANTITY
<b>Groundcovers</b>												
Atse	<i>Atriplex semibaccata</i>	Creeping Saltbush	Groundcover	Indigenous	0.4	1					7	
Camo	<i>Carpobrotus modestus</i>	Inland Pig Face	Groundcover	Indigenous	0.1	2					6	
DiarS	<i>Dichondra argentea 'Silver Falls'</i>	Dichondra	Groundcover	Exotic	0.2	1					34	5
Dire	<i>Dichondra repens</i>	Kidney Weed	Groundcover	Indigenous	0.2	0.2						39
Dicr	<i>Disphyma crassifolium</i>	Pig Face	Groundcover	Indigenous	0.2	0.5					25	
Ento	<i>Enchylaena tomentosa</i>	Ruby Saltbush	Small shrub	Indigenous	0.5	1					15	
HaviM	<i>Hardenbergia violacea 'Mini Haha'</i>	Dwarf Hardenbergia	Groundcover	Indigenous	0.2	1					7	50
MypaM	<i>Myoporum parvifolium 'Mallee Carpet'</i>	Creeping boobialla	Groundcover	Indigenous	0.2	2					6	10
Vihe	<i>Viola hederacea</i>	Native Violet	Groundcover	Indigenous	0.2	0.2						124
XehyS	<i>Xerochrysum hybrid 'Sundaze Everlasting Gold'</i>	Everlasting Daisy	Groundcover	Indigenous	0.3	0.5						30
<b>Grasses &amp; grass-like forms</b>												
DicaG	<i>Dianella caerulea 'Goddess'</i>	Blue Flax Lily	Small shrub	Indigenous	0.5	0.5					178	119
Dilo	<i>Dianella longifolia</i>	Pale Flax Lily	Small shrub	Indigenous	1	0.4						22
DireK	<i>Dianella revoluta 'Kentlyn'</i>	Native Flax	Small shrub	Indigenous	0.8	0.5					10	150
DireL	<i>Dianella revoluta 'Little Rev'</i>	Dianella Little Rev	Groundcover	Indigenous	0.3	0.3						1
Lipa	<i>Libertia paniculata 'Shadow Star'</i>	Grass Flag	Small shrub	Native	0.7	0.5						54
LimuJ	<i>Liriope muscari 'Just Right'</i>	Turf Lily	Small shrub	Exotic	0.5	0.5						199
Lospl	<i>Lomandra longifolia x confertifolia spp. pallida 'Lime Tuff'</i>	Mat Rush	Groundcover	Indigenous	0.4	0.4						62
LoloF	<i>Lomandra longifolia 'Fine N Dandy'</i>	Mat Rush	Large shrub	Indigenous	1.5	1.5						10
LoloT	<i>Lomandra longifolia 'Tanika'</i>	Mat Rush	Small shrub	Indigenous	0.6	0.6					18	10
PolaE	<i>Poa labillardieri 'Eskdale'</i>	Blue Tussock Grass	Small shrub	Indigenous	0.5	0.5						5
Pomo	<i>Poa morrisii</i>	Velvet Tussock Grass	Small shrub	Indigenous	0.6	0.6						10
PopoK	<i>Poa poiiformis 'Kingsdale'</i>	Tussock Grass	Small shrub	Indigenous	0.5	0.5						43
ThtrT	<i>Themeda triandra 'True Blue'</i>	Kangaroo Grass	Small shrub	Indigenous	1	0.5					8	40
Xahy	<i>Xanthorrhoea hybrid 'Supergrass'</i>	Grass Tree	Large shrub	Indigenous	2	2					4	
<b>Lawn</b>												
Lawn	<i>Stenotaphrum secundatum 'Sir Walter'</i>	Sir Walter Buffalo	Turf	Exotic								36.96 sqm

THESE DRAWINGS ARE THE COPYRIGHT OF BUSH PROJECTS AND ARE NOT TO BE REPRODUCED WITHOUT WRITTEN APPROVAL.

**PRINT IN COLOUR**



REV	DATE	DR	CH	COMMENT

**PRELIMINARY  
NOT FOR CONSTRUCTION**

PROJECT NAME: NARRM NGARRGU LIBRARY & FAMILY SERVICES CENTRE

PROJECT No.: 22020

CLIENT: CITY OF MELBOURNE

DRAWING: LA709

DRAWING TITLE: LEVEL 03 PLANT SCHEDULE - SHEET 3

N.T.S.

**DRAFT**

# GREEN FACTOR SCORECARD



141 Therry Street | Melbourne | Public building  
 Planning application number: TPMR-2018-2  
 City of Melbourne



CITY OF MELBOURNE

### GREEN FACTOR SCORE

0.79

765.2 m<sup>2</sup> of Green Factor area<sup>a</sup>  
 966 m<sup>2</sup> total site area

How does this compare?

### GREEN ELEMENTS

Ranked by % contribution to Green Factor

1. Small shrub (< 1.5m height)	36.4%
2. Small tree (canopy width < 6m)	18.5%
3. Soil or substrate (200 - 500mm depth)	15.7%
4. Large shrub (> 1.5m height)	10.2%
5. Climbers	7%
6. Lawn and turf	4.6%
7. Soil or substrate (over 500mm depth)	3.8%
8. Ground cover	3.4%
9. Soil or substrate (under 200mm depth)	0.5%

### ECOSYSTEM OUTCOMES

Relative contribution

### LOCATION OF GREEN ELEMENTS

Ranked by % contribution to Green Factor

Green Roof	59.9%
Planters (on structure)	33.1%
Green Facade	7%
Non-green area	None

### GREEN FACTOR AREA

### PROJECT INFORMATION

Project considerations

- Certified maintenance plan
- Landscape architect engaged in design
- Landscape brief developed
- Irrigation consultant appointed
- Rain/non-potable water used for irrigation
- Urban Forest Fund

Finalised September 02, 2024

### SPECIFIED GREEN INFRASTRUCTURE ELEMENTS

Green Facade			Planters (on structure)		
Climbers	Indigenous	22.46 sqm	Small tree (canopy width < 6m)	Indigenous	4 pcs
Climbers	Native	31.44 sqm	Large shrub (> 1.5m height)	Indigenous	4.01 sqm
Climbers	Exotic	20.96 sqm	Small shrub (< 1.5m height)	Indigenous	12.16 sqm
			Ground cover	Indigenous	12.39 sqm
			Small tree (canopy width < 6m)	Native	8 pcs
			Large shrub (> 1.5m height)	Native	17.5 sqm
			Small shrub (< 1.5m height)	Native	0.19 sqm
			Large shrub (> 1.5m height)	Exotic	0.19 sqm
			Ground cover	Exotic	3.33 sqm
			Soil or substrate (over 500mm depth)	Soil	72 sqm
			Soil or substrate (200 - 500mm depth)	Soil	49.78 sqm
Green Roof					
Large shrub (> 1.5m height)	Indigenous	16.52 sqm			
Small shrub (< 1.5m height)	Indigenous	33.37 sqm			
Ground cover	Indigenous	6.54 sqm			
Large shrub (> 1.5m height)	Native	20.06 sqm			
Small shrub (< 1.5m height)	Native	160.11 sqm			
Small shrub (< 1.5m height)	Exotic	6.02 sqm			
Ground cover	Exotic	0.6 sqm			
Lawn and turf	Exotic	39.96 sqm			
Soil or substrate (200 - 500mm depth)	Soil	250.2 sqm			
Soil or substrate (under 200mm depth)	Soil	39.96 sqm			

THESE DRAWINGS ARE THE COPYRIGHT OF BUSH PROJECTS AND ARE NOT TO BE REPRODUCED WITHOUT WRITTEN APPROVAL.

**PRINT IN COLOUR**



REV	DATE	DR	CH	COMMENT

PRELIMINARY  
NOT FOR CONSTRUCTION

PROJECT NAME: NARRM NGARRGU LIBRARY & FAMILY SERVICES CENTRE

PROJECT No.: 22020

CLIENT: CITY OF MELBOURNE

DRAWING: LA800

DRAWING TITLE: GREEN FACTOR SCORECARD

N.T.S.

**DRAFT**



THESE DRAWINGS ARE THE  
 COPYRIGHT OF BUSH PROJECTS  
 AND ARE NOT TO BE REPRODUCED  
 WITHOUT WRITTEN APPROVAL.  
**PRINT IN COLOUR**



REV	DATE	DR	CH	COMMENT
<b>PRELIMINARY NOT FOR CONSTRUCTION</b>				

PROJECT NAME: NARRM NGARRGU LIBRARY & FAMILY SERVICES CENTRE

PROJECT No.: 22020

CLIENT: CITY OF MELBOURNE

DRAWING: LA801

DRAWING TITLE: LANDSCAPE CONCEPTUAL RENDER - SHEET 1

N.T.S.

**DRAFT**



THESE DRAWINGS ARE THE  
 COPYRIGHT OF BUSH PROJECTS  
 AND ARE NOT TO BE REPRODUCED  
 WITHOUT WRITTEN APPROVAL.  
**PRINT IN COLOUR**



REV	DATE	DR	CH	COMMENT
<b>PRELIMINARY NOT FOR CONSTRUCTION</b>				

PROJECT NAME: NARRM NGARRGU LIBRARY & FAMILY SERVICES CENTRE

PROJECT No.: 22020

CLIENT: CITY OF MELBOURNE

DRAWING: LA802

DRAWING TITLE: LANDSCAPE CONCEPTUAL RENDER - SHEET 2

N.T.S.

**DRAFT**



THESE DRAWINGS ARE THE  
 COPYRIGHT OF BUSH PROJECTS  
 AND ARE NOT TO BE REPRODUCED  
 WITHOUT WRITTEN APPROVAL.  
**PRINT IN COLOUR**



REV	DATE	DR	CH	COMMENT
<b>PRELIMINARY NOT FOR CONSTRUCTION</b>				

PROJECT NAME: NARRM NGARRGU LIBRARY & FAMILY SERVICES CENTRE

PROJECT No.: 22020

CLIENT: CITY OF MELBOURNE

DRAWING: LA803

DRAWING TITLE: LANDSCAPE CONCEPTUAL RENDER - SHEET 3

N.T.S.

**DRAFT**



THESE DRAWINGS ARE THE  
 COPYRIGHT OF BUSH PROJECTS  
 AND ARE NOT TO BE REPRODUCED  
 WITHOUT WRITTEN APPROVAL.  
**PRINT IN COLOUR**



REV	DATE	DR	CH	COMMENT
<b>PRELIMINARY NOT FOR CONSTRUCTION</b>				

PROJECT NAME: NARRM NGARRGU LIBRARY & FAMILY SERVICES CENTRE

PROJECT No.: 22020

CLIENT: CITY OF MELBOURNE

DRAWING: LA804

DRAWING TITLE: LANDSCAPE CONCEPTUAL RENDER - SHEET 4

N.T.S.

**DRAFT**



## How to contact us

### Online:

[melbourne.vic.gov.au](http://melbourne.vic.gov.au)

### In person:

Melbourne Town Hall - Administration Building  
120 Swanston Street, Melbourne  
Business hours, Monday to Friday  
(Public holidays excluded)

### Telephone:

03 9658 9658  
Business hours, Monday to Friday  
(Public holidays excluded)

### Fax:

03 9654 4854

### In writing:

City of Melbourne  
GPO Box 1603  
Melbourne VIC 3001  
Australia



### Interpreter services

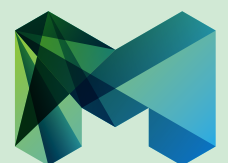
We cater for people of all backgrounds  
Please call 03 9280 0726

03 9280 0717 廣東話  
03 9280 0719 Bahasa Indonesia  
03 9280 0720 Italiano  
03 9280 0721 普通话  
03 9280 0722 Soomaali  
03 9280 0723 Español  
03 9280 0725 Việt Ngữ  
03 9280 0726 عربي  
03 9280 0726 한국어  
03 9280 0726 हिंदी  
03 9280 0726 All other languages

### National Relay Service:

If you are deaf, hearing impaired or speech-impaired,  
call us via the National Relay Service: Teletypewriter (TTY)  
users phone 1300 555 727 then ask for 03 9658 9658  
9am to 5pm, Monday to Friday (Public holidays excluded)

[melbourne.vic.gov.au](http://melbourne.vic.gov.au)



CITY OF MELBOURNE