

EAST MELBOURNE

URBAN FOREST PRECINCT PLAN 2025-35



CITY OF MELBOURNE

Acknowledgement of Traditional Owners

The City of Melbourne respectfully acknowledges the Traditional Owners of the land we govern, the Wurundjeri Woi-wurrung and Bunurong / Boon Wurrung peoples of the Kulin and pays respect to their Elders past and present.

We acknowledge and honour the unbroken spiritual, cultural and political connection they have maintained to this unique place for more than 2000 generations.

We accept the invitation in the Uluru Statement from the Heart and are committed to walking together to build a better future.

Council Plan 2021-25

The Council Plan 2021-25 sets out our strategic direction and commitment to the community for the next four years. Based on six strategic objectives for our city, this is our detailed plan for our city's revitalisation and considers the needs of all people who access and experience the City of Melbourne municipality. For more information visit melbourne.vic.gov.au/council-plan



Climate and biodiversity emergency

Melbourne is a city setting the standard on climate action. Prioritising our environment and taking urgent action to reduce emissions and waste is key to protecting public health, strengthening the economy and creating a city that mitigates and adapts to climate change.

CONTENTS

Message from City of Melbourne	5
The Urban Forest	6
What is an urban forest?	6
What are the urban forest precinct plans?	6
Why is the urban forest important?	8
How does the urban forest help with climate change?	8
The City of Melbourne's heat vulnerability	10
History of land management in Melbourne	12
East Melbourne's urban forest	17
East Melbourne community vision	18
Managing the urban forest	24
Canopy cover	24
Species selection	26
Diversity	28
How we will plant, grow and care for our trees	30
Site specific tree planting considerations	32
How can you be involved in your local urban forest?	34

30 December 2024

Cover: Illustration by the artist Lilian Darmono

Disclaimer

This report is provided for information and it does not purport to be complete. While care has been taken to ensure the content in the report is accurate, we cannot guarantee it is without flaw of any kind. There may be errors and omissions or it may not be wholly appropriate for your particular purposes. In addition, the publication is a snapshot in time based on historic information which is liable to change. The City of Melbourne accepts no responsibility and disclaims all liability for any error, loss or other consequence which may arise from you relying on any information contained in this report.

To find out how you can participate in the decision-making process for City of Melbourne's current and future initiatives, visit melbourne.vic.gov.au/participate



FOREWORD FROM THE LORD MAYOR OF MELBOURNE AND COUNCILLOR



Melbourne's trees are justly famous for the character and the environmental benefits they bring to our city. More than 80,000 trees in our municipality are so important in cooling the streets and parks and providing habitat for birds and animals. We're very proud that all the trees we plant are thoughtfully planned through our Urban Forest Precinct plans.

The plans grew out of an Urban Forest Strategy that has embedded healthy city principles in our thinking. The social, environmental and health benefits of urban forests have become more clear with every year. From parks to wetlands, river embankments, balconies and roof gardens, Melbourne's urban forest creates an enjoyable and healthy place for people to work and live. Now we have an opportunity to renew our urban forest planning for the next decade.

The past ten years in Melbourne have seen innovative urban forest management across ten precincts. We celebrate and embrace the distinctive quality of each. A key part of our approach is planting trees appropriate to each neighbourhood, in consultation with the community. Building on these discussions, ten new Urban Forest Precinct Plans have been developed that will enhance each neighbourhood's character.

Why renew the plans? The beauty of Melbourne's trees and gardens has always enchanted residents, workers and visitors, and our urban forest planning must evolve to protect and expand this natural asset. Looking ahead, it's important to focus on climate change. This is crucial.

We recognise Melbourne's vulnerability to extreme heat, and we know that trees play a key role in reducing the impact of heat on people and wildlife. The great value of urban forest planning lies in increasing canopy cover, improving amenity and consulting with the community to maximise the benefits of trees for everyone in our city.

Creating healthy ecosystems, protecting biodiversity, becoming a water-sensitive city, reducing the urban heat island effect - all these aims help position Melbourne as a leader in urban forestry. These plans recognise and strengthen the deep connection our community has to the natural environment. In the next decade let's continue to create a legacy with an urban forest of which Melbourne can be proud.



Lord Mayor
Nicholas Reece



Councillor Davydd Griffiths
Environment Portfolio Lead

THE URBAN FOREST

What is an Urban Forest?

The urban forest is made up of all of the trees and other vegetation – and the soil and water that supports it – within our municipality. It includes vegetation in streets, parks, gardens, plazas, campuses, river and creek embankments, wetlands, railway corridors, community gardens, green walls, balconies and roofs.

The land on which the City of Melbourne sits has been managed for thousands of generations by the Wurundjeri Woi-wurrung and Bunurong / Boon Wurrung peoples of the Kulin. The *urban* forest that we experience today is a result of our environmental, economic, social, political and cultural history.

What are the Urban Forest Precinct Plans?

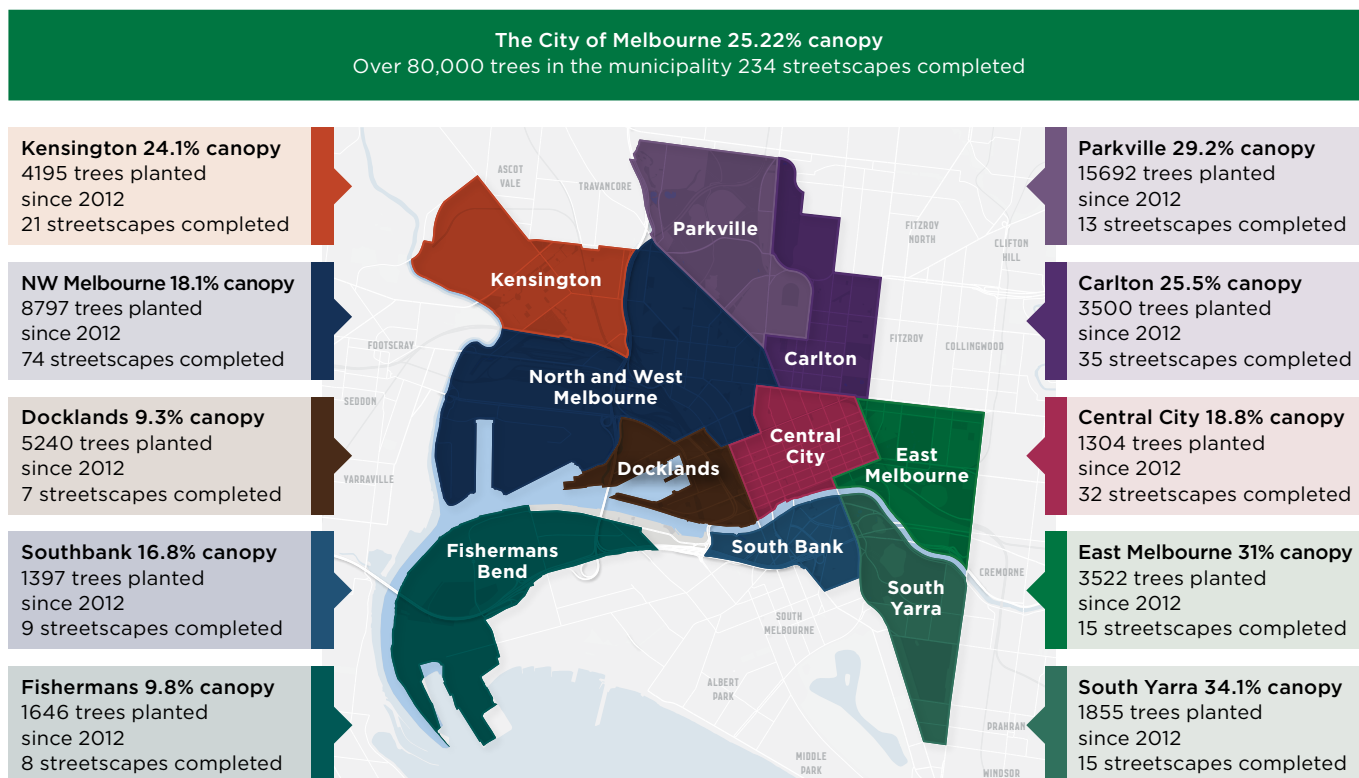
We have divided our municipality into 10 urban forest precincts (Map 1). The Urban Forest Precinct Plans guide tree planting in streets over a 10-year period. The precinct plans complement our 2012 Urban Forest Strategy and form a key component of the strategy’s implementation.

The precinct plans direct tree planting to achieve the Urban Forest Strategy objectives, protect and enhance neighbourhood character, and to prioritise works and budgets. The plans build on many decades of urban forest management and respect the legacy of thousands of generations of management of this Country.

Each Urban Forest Precinct Plan has been developed together with the community. They are based on science and urban design principles. The first round of precinct planning occurred between 2013 and 2015. Those documents were designed with the local community to determine shared vision for the urban forest.

Map 1. shows the targets outlined in the original Urban Forest Precinct Plans and the current canopy cover in each of the precincts. Since 2012 our trees numbers have risen to over 80,000 in the municipality with 3500 trees planted in East Melbourne including 15 major street tree planting projects completed.

Map 1. Trees planted in the municipality



Map 2. Trees planted over the last 10 years in the municipality and in East Melbourne



Key

- Trees planted since 2012
- Parks / green spaces



Why is the urban forest important?

Our Urban Forest Strategy (2012) was one of the first in the world. Since its introduction, many other strategies and policy documents around the world have been introduced that support a similar approach to supporting and building healthy cities through urban forestry.

Urban forests provide many environmental, economic and social benefits that make cities enjoyable places for people to live and work. Trees are appreciated for their beauty, but they also provide many other benefits.

Early urban forest management focused on how trees looked, but research in the 1990s began to quantify the other benefits of urban trees with cooling and slowing of stormwater recognised as particularly important. More recently, urban trees have been identified as integral to ecology in cities – urban trees support a wide variety of wildlife, are a key tool to help keep cities healthy, adapt to climate change and mitigate the urban heat island effect (whereby urban areas are several degrees hotter than surrounding rural areas).

Urban forests support human health and wellbeing in many ways:

- Cooling the city
- Supporting health, wellbeing and happiness of people
- Improving social connection
- Cleaning air and water
- Attracting people to live, work and visit the city
- Providing habitat for native birds and animals
- Stimulating economic activity in retail and dining precincts
- Creating a unique sense of character to an area
- Supporting cultural practices of First Nation people

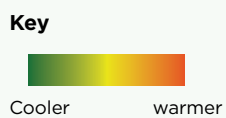
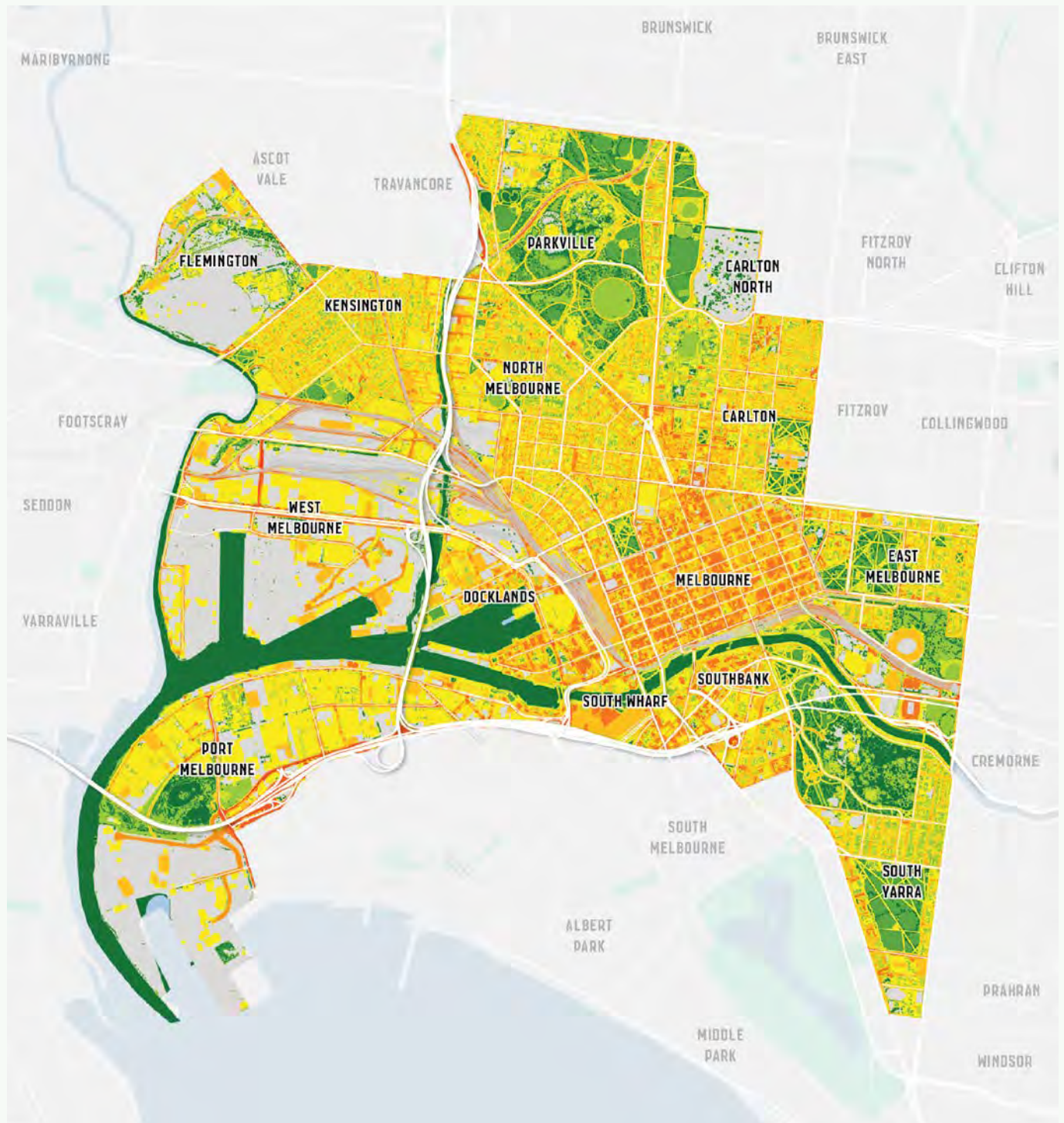
The urban forest has been identified as one of the most cost-effective ways to reduce the impacts of climate change and heat on our city. The Urban Forest Strategy has established principles and targets that will help us to maximise the benefits of the urban forest for people and wildlife.

How does the urban forest help with climate change?

Climate change impacts to human health and wellbeing are a significant concern for our municipality. Climate change science tells us that Melbourne is likely to experience an increase in the frequency and severity of extreme weather events such as heat waves, drought and flooding. Heat waves kill more people in Australia (and the world) each year than any other natural disaster (Coates et al 2014; 2022). When the global average temperature rises above pre-industrialisation levels by 1.5C it will likely cause major and irreversible damage to global ecosystems, putting liveability everywhere at risk. This critical 1.5C threshold is expected to be reached within the next ten years regardless of global emission reductions (World Meteorological Organization Report 1338, 2023).

The urban heat island compounds the effects of climate change. This means that central Melbourne will reach temperatures associated with heat related illness in vulnerable populations more often and for longer than surrounding suburban and rural areas. The urban heat island is a result of hard surfaces that absorb heat, human activity that generates heat and low vegetation cover that does not provide enough shade and natural cooling.

Map 3. A human thermal comfort model across the municipality, green represents the greatest human thermal comfort, whereas orange represents areas with the lowest human thermal comfort ranges.

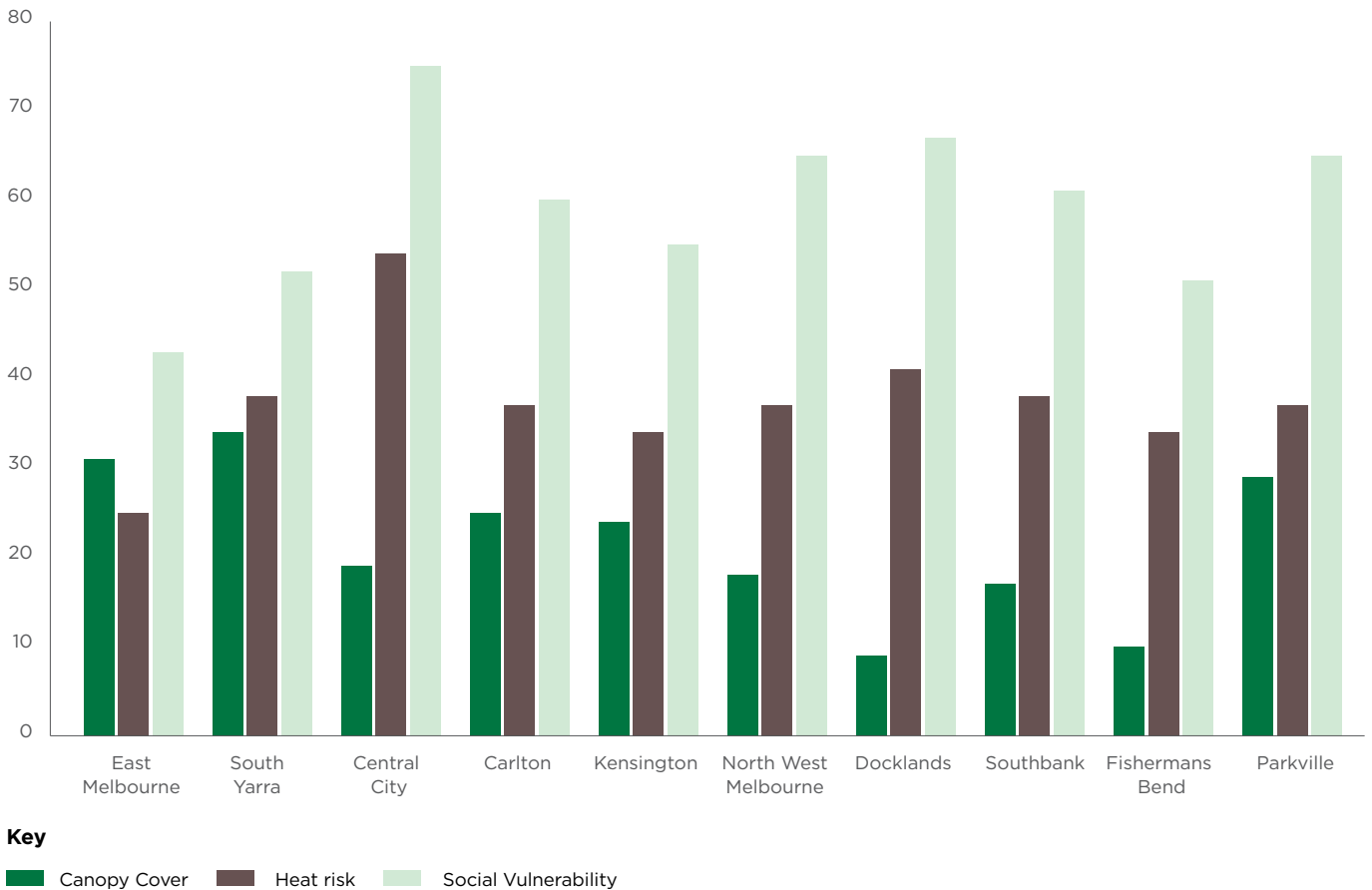


The City of Melbourne's heat vulnerability

We monitor heat vulnerability in the municipality by considering many factors. It is not only about where the hottest places are, but also about the level vulnerability of that local community to heat. Figure 1. shows social vulnerability, heat risk and canopy cover across the urban forest precincts. Social vulnerability is a measurement that considers information such as the numbers of very old or young people, people who need assistance, people renting,

people below the poverty line and other potentially isolated groups. The heat risk is a metric which combines exposure to heat, the number of heat hazard days and the social vulnerability. While the City of Melbourne is recognised as a liveable city, there are areas of high social vulnerability within each of our neighbourhoods and this increases our heat risks. Locations with high heat risk are often areas with low canopy cover as well. Planting trees can help to provide comfortable and cool places in areas of high heat risk. East Melbourne has the lowest social vulnerability, heat risk and one of the highest canopy covers in the municipality.

Figure 1. Social vulnerability, heat risk and canopy cover across the urban forest precincts



The Urban Forest Strategy (2012 – 2032) sets out high level principles to guide management of Melbourne’s urban forest:

- Mitigate and adapt to climate change
- Reduce the urban heat island effect
- Design for health and wellbeing
- Create healthier ecosystems
- Design for liveability and cultural integrity
- Become a water sensitive city
- Position Melbourne as a leader in urban forestry

These principals are supported by targets to help us achieve a healthy urban forest:

- **Increase canopy cover;** achieve 40% by 2040
- **Increase urban forest diversity;** no more than 5% of one species, 10% of one genus and 20% of one family
- **Improve vegetation health;** 90% of our tree population will be healthy by 2040
- **Improve soil moisture and water quality**
- **Improve urban ecology;** protect and enhance urban ecology and biodiversity
- **Inform and consult with the community;** increase community understanding and connection to our urban forest

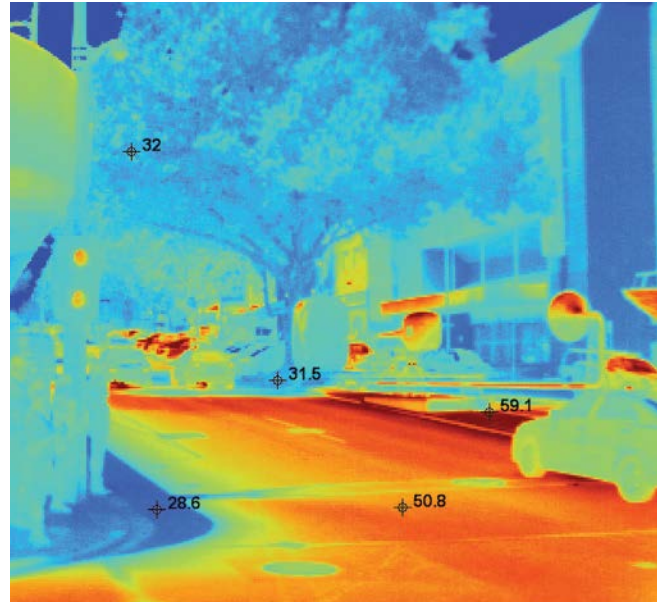


Image. Thermal image of Russel Street, Melbourne



Image. Trees are important for healthy streetscapes

History of land management in Melbourne

We recognise that Aboriginal peoples are the First Nations people of this land and that they have strived to retain their cultures and identity through colonisation for more than two centuries.

The urban forest today is a mixture of plant types from all around the world, but it hasn't always been this way. Before buildings and roads came to dominate the landscape, this place was a more ecologically diverse environment. There were many different plant communities which indicated different soil types, as well as major areas such as rivers and swamps.

The Wurundjeri Woi-wurrung people are the Traditional Owners of the area known today as East Melbourne. Colonisation had profound and irreversible impacts on the land, plants, animals and people. Prior to colonisation, the landscape was mainly open woodlands, with grassy plains, trees and brackish swamps. This land was actively managed for thousands of generations by the Wurundjeri Woi-wurrung people.

Trees were an important part of Country prior to colonisation and continue to have cultural significance for First Nations people today. We believe that we can do better at respecting First Nations people values and priorities in the urban forest. The precinct plans present an opportunity to collaborate with Traditional Owners to ensure that the urban forest is managed in a way that protects and enhances its cultural importance. Through this plan, we aspire to:

- Respect Aboriginal values and priorities through the planning of the urban forest
- Maintain regular meetings with Traditional Owners to discuss management of our urban forest
- Identify culturally significant trees and collaborate with Traditional Owners on programs to protect and celebrate them
- Ensure that pre-colonial tree species and other vegetation are visible in the urban forest and throughout the city

These are not all of our aspirations and ongoing collaboration with Traditional Owners may lead to further opportunities.

The Manna Gum (*Eucalyptus viminalis*) is a culturally important tree for Traditional Owners, and the health and wellbeing of the Manna Gum in the municipality is of prime importance to continue our commitment to reconciliation. Currently, there are over 450 Manna Gums in the city, mostly located around Royal Park. Prior to colonisation, Manna Gums would have been found closer to waterways. The City of Melbourne is working with Traditional Owners on long-term programs to protect and celebrate Manna Gums throughout the city.

Images: Artistic representation of pre-colonial vegetation in the area now known as The City of Melbourne. All images created by ASPECT Studios and TCL Studios.





Early Treeless Melbourne

The colonisation of Melbourne had profound impacts on this land. The open woodlands, brackish swamps and herb-rich plains were quickly changed to a bare, compacted and dry landscape. Early paintings clearly show the widespread land clearing.

This changed landscape was then 're-built' to form the city we know today. The process of urbanisation changed the environment of the city, such as industrialisation polluting our soil and water and the compaction of our clay soils. After the initial colonisation of Melbourne, when indigenous bushland was cleared to make way for a township, trees were given little priority. In the early days trees were seen

as a resource to be used and little thought was given to the way the town looked. Between 1850 and 1870 the desire was to create shelter from wind and as quickly as possible. By the 1870s the city fully recognised the benefits of street tree plantings and in 1888 a planned program of street planting started. By the early twentieth century, planes, elms, oaks, poplars, lagunarias, chestnuts and palms were planted along the boulevards, streets and parks of Melbourne. For the drier areas north of Melbourne, kurrajongs, silky oaks, Moreton Bay figs, she-oaks and golden wattles were planted. This period shows a diverse range of trees planted and highlights that thought was given to trees environmental benefits and tolerances.

Images: Historic images of early Melbourne streets, and a 1854 painting (Nathanial Whittock)





EAST MELBOURNE'S URBAN FOREST

Historical tree planting

Early tree planting in East Melbourne was influenced by the need to create shelter from wind and sun. The first significant street tree plantings in East Melbourne occurred in 1859 when Victoria Parade was planted with blue gums. While the tree species have changed, Victoria Parade has continued to have trees planted there since this time. The public wanted more trees to make the streets beautiful and increase health benefits. In response, we started our first tree planting programme in 1878 when Wellington Parade was planted. Grey Street planting was budgeted for in 1890 and boulevards were planted to make the streets look more beautiful in the lead up to the Royal visit in 1901. Records suggest that tree planting was occurring in Melbourne streets from that period up until World War one. Gisborne Street was planted with London plane trees around 1906. Major tree planting occurred in East Melbourne in the 1930s when the majority of roundabouts and median strips were constructed.

East Melbourne Character

Most streets in East Melbourne are 30 metres wide and include broad centre median strips with narrow footpaths and no nature strips. The medians break up the large areas of pavement, are generally clear of most underground and overhead services, and can accommodate large canopy trees. Two small pockets of Jolimont appear leafy because of the surrounding parks, and their more narrow 10m to 15m street widths create a more intimate character.

Tree Diversity in East Melbourne

The core tree genera that form East Melbourne's urban forest are elms, planes, maples and corymbias (gums). Elms are iconic in the East Melbourne precinct and link it to the Fitzroy Gardens, it is important to preserve this established character. The evergreen lemon scented gums in Lansdowne Street and the brush box in Albert Street provide a contrast to the trees on other major streets. Jolimont is planted with a mixture of mid-sized trees suited to the narrower streets. Compared to other neighbourhoods, East Melbourne has one of the highest proportions of exotic trees and lowest proportion of native and indigenous trees. East Melbourne's street trees are most similar to South Yarra and Carlton, and most different to Fishermans Bend and the Central City. Planning tree planting within each precinct provides opportunities to reinforce local character. We want to embrace and celebrate the differences between precincts.



Image. George Street 1901

East Melbourne Community Vision

Community perspectives are central to our urban forest planning. A range of different community engagement approaches were used to capture diverse community perspectives. This plan reflects the many community ideas, priorities and values shared during this process.

“East Melbourne’s urban forest respects its heritage of avenues, closed canopies and deciduous trees while becoming more diverse and inclusive for native biodiversity, interactions with the river and food production”.

Your urban forest, community recommendations

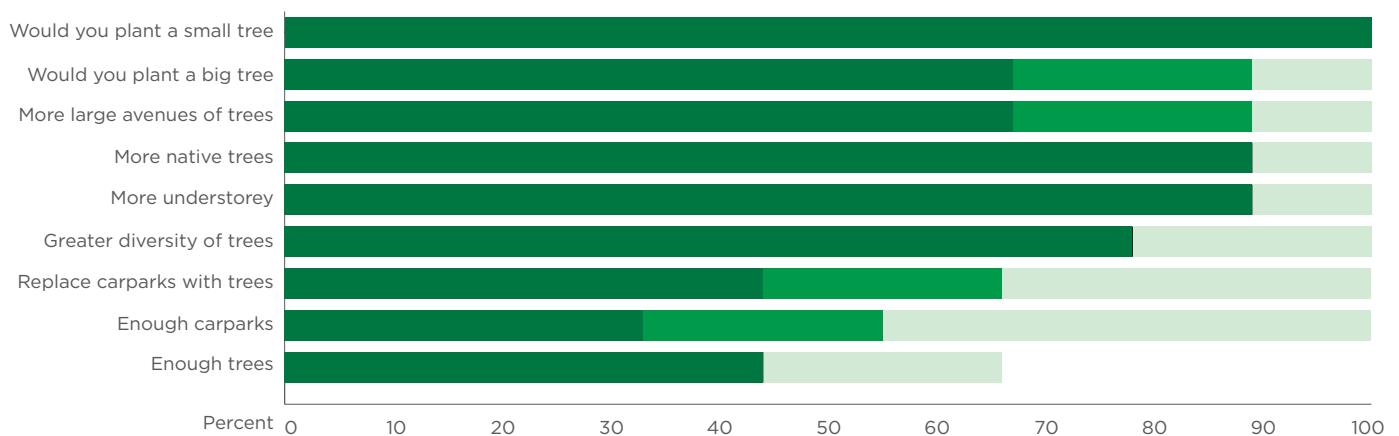
A diverse range of views were expressed by the community, but some consistent themes can be used to guide future planting:

East Melbourne’s existing urban forest character is large avenues of trees providing shade and autumn colour. This character should be maintained into the future.

- It is acknowledged that range of species that contribute to this character (such as elms) are both abundant and potentially at risk from increasing temperatures, pests and diseases.
- The avenue appearance in East Melbourne should be maintained while allowing for increased tree species diversity. Different species could be used in strategic locations to increase diversity, such as roundabouts or on streets which already have mixed species plantings.
- Understorey plantings are likely to be supported by the community provided that consideration is given to existing neighbourhood character.
- Some community members would like to see innovation around biodiversity and food such as understorey planting, and the use of indigenous, native and food tree species.
- There is scope to introduce landmark native species plantings in strategic locations.

Map 4. shows the community priority places for greening from the community engagement in East Melbourne. The community valued the urban forest for many different reasons and sometimes there were conflicting opinions. The major themes from our engagement are illustrated with representative quotes. These values are reflected in the vision statement.

Figure 2. Community attitudes towards trees and competing demands in East Melbourne



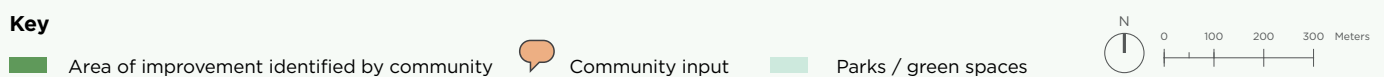
Key

Agree Disagree Neither

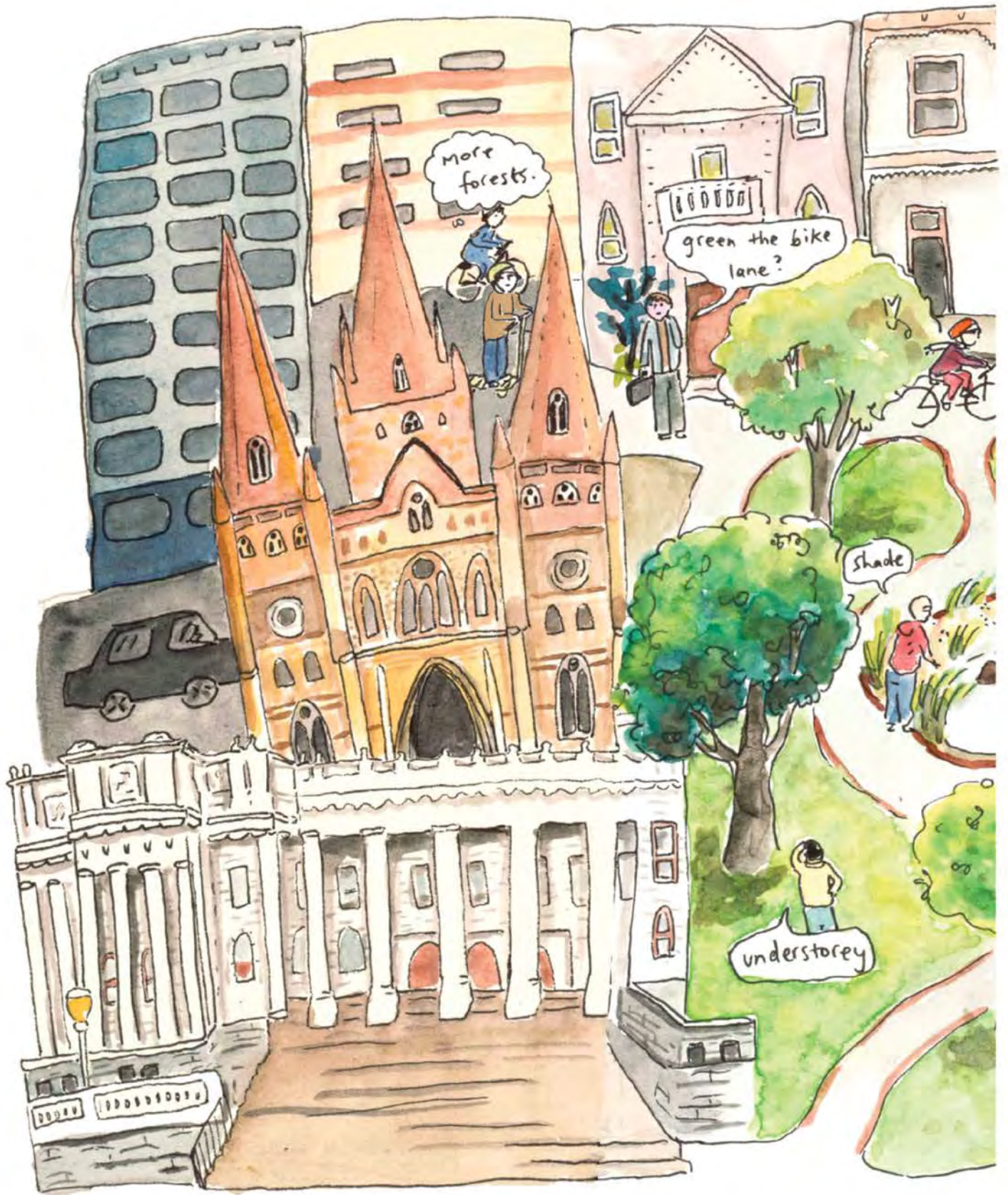
Images: East Melbourne community workshop in March 2023



Map 4. Areas highlighted green for improvement based on community workshops. The comment icons indicate all the locations of in-depth comments posted by the community, with major themes and illustrative quotes from our engagement are also presented.







East Melbourne.



Image. Comics by artist Sofia Sabbagh

MANAGING THE URBAN FOREST

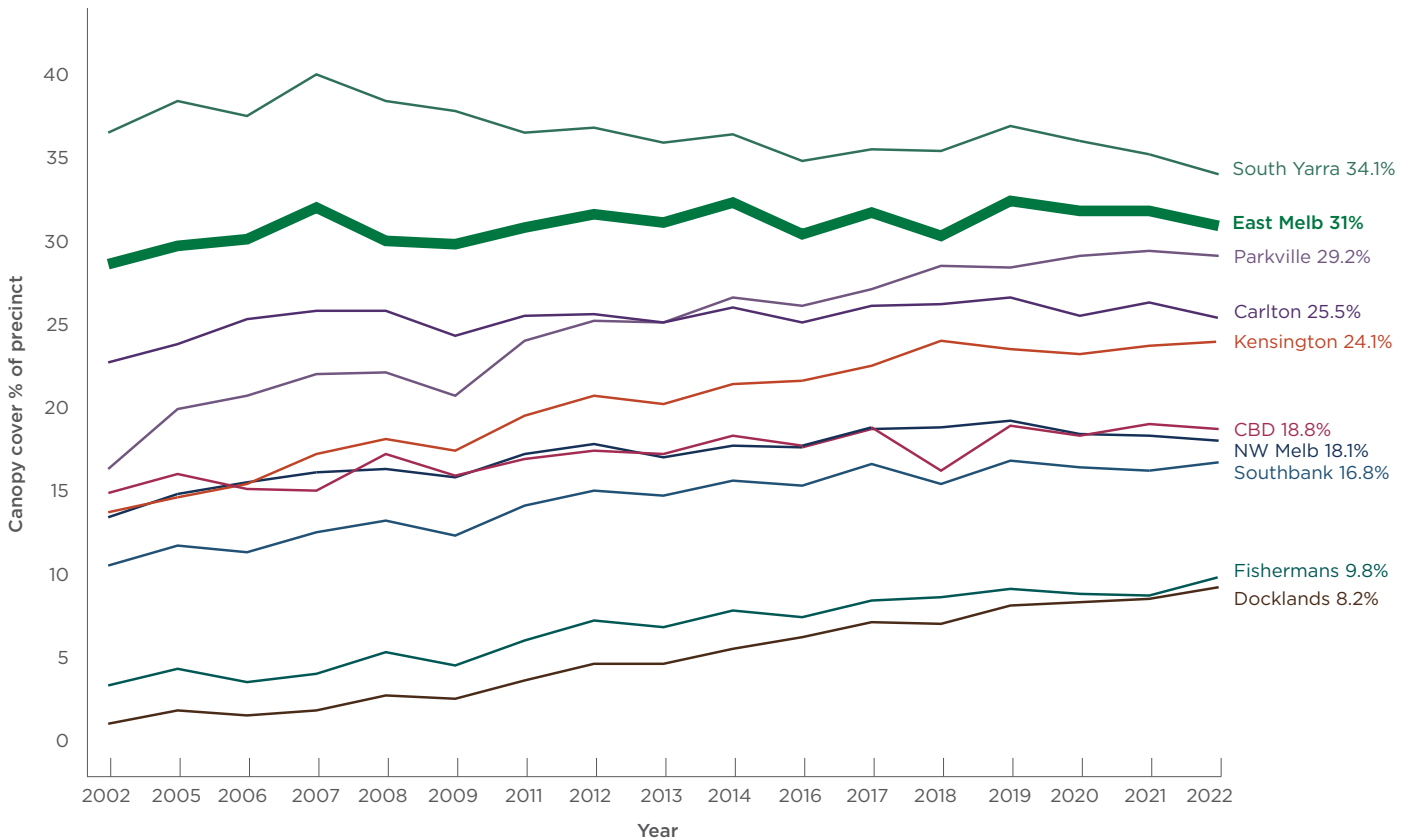
Canopy cover

Trees take time to grow, sometimes up to 20 years before they provide significant canopy cover. When mature trees are removed it takes a long time to replace the canopy cover. Although more than 3000 new trees are planted across the city each year, slow growth and tree removals mean that it can take a long time for canopy cover to increase.

East Melbourne's canopy cover

Map 5. shows canopy cover of streets in East Melbourne. In 2023 some streetscapes have low canopy but because of recent new plantings: canopy cover is expected to increase in these streets over the coming decades. Streetscapes with low canopy and no recent tree planting are prioritised for planting in the next 10 years. We expect low canopy streets to become high canopy streets over time.

Figure 3. Canopy cover for each precinct over the past 20 years



Key

- East Melbourne
- South Yarra
- CBD
- Carlton
- Docklands
- Kensington
- NW Melbourne
- Parkville
- Southbank
- Fishermans Bend

Map 5. Canopy cover per street segment in East Melbourne



Key - Canopy cover (%)

- Established canopy (>40%)
- Established canopy (31-39%)
- Growing canopy (20-30%)
- Growing canopy (<=30%) with new trees
- Poor canopy (<20%)
- Parks / green spaces



Species selection

Urban forests can help create a sense of place and unique local identity. The community engagement within each precinct helps us understand what the community loves about its local urban forest, and what the community hopes it will look and feel like in the future. This helps us to manage a diverse urban forest by supporting different local characters.

Maintaining urban forest character through species selection

Achieving urban forest diversity goals does not mean that the urban forest character needs to change, we can achieve the same look and feel with a range of different species. Major types of trees with different characters include:

- Deciduous trees that lose all of their leaves for parts of the year. This character typically allows shade in summer and sunlight during winter, as well as autumn colours. Deciduous species that could be well suited in Melbourne's future climate could include species from North America and Asia that have warmer distributions than European species.
- Evergreen trees that retain green leaves throughout the year. This character typically provides an all year greening opportunity and are typically better adapted to handling extreme climatic conditions (very hot or dry or cold).
- Monocultures refer to only one species of tree being planted on a street.
- Mixed species streets refer to a mix of different types of trees. These can be a mix of different deciduous trees, or a mix of both deciduous and evergreen species.

Map 6. shows the current street planting types in East Melbourne. The parks and gardens within the precinct host a diverse range of plant species. Some major East-West roads have diverse mixed tree species plantings with both deciduous and evergreen species. North-South streetscapes are mostly mixed avenues of deciduous trees. Future planting will reinforce this neighbourhood character and support the community vision by:

- Maintaining the character of North-South and East-West streets with mixed species of deciduous trees.
- Incorporate diversity in to the precinct in North-South streets that support mixed plantings of both deciduous and evergreen plants.
- Diversify monoculture streetscapes with different species, whilst keeping consistent character (i.e. using all deciduous species).
- Use understory plantings and feature trees at local landmark sites (such as roundabouts, raised crossings, extended kerb spaces).
- Connect open spaces by maximising canopy cover and planting tree species or understory vegetation that supports biodiversity.
- Use tree planting around boundaries of parks to extend park styles into adjacent streets.
- Create breaks between high-risk populations of significant species by planting different species in specific locations.

Map 6. Current street tree planting types in East Melbourne



Key - Species type

- Deciduous mixed
 - Mixed planting
 - Deciduous monoculture
- Evergreen monoculture
 - Evergreen mixed
 - Parks / green spaces



■ Diversity

Around 36 per cent of the urban forest in the municipality is made up of eucalypt, plane and elm trees. East Melbourne is also dominated by these species. Other prominent species in the neighbourhood include maples and oak trees, this is reflected in the community consultation where autumn colour and uniform avenues were considered important for the neighbourhood character.

Urban forest diversity is important for a healthy forest. Diversity in tree species helps protect the biodiversity of the city but also and importantly reduces the risk of large areas of tree loss in the face of pests and pathogens. Whilst maintaining the character of each precinct is important, there is also a need to protect existing trees from increasing pest and pathogen pressure, exacerbated by climate change.

Numbers-based diversity targets have largely been achieved for the city since the start of the Urban Forest Strategy, so our focus in the next decade is targeted plantings to create diversity in specific locations to reduce the potential impact of pests and diseases. To achieve this, we will seek to:

- Create breaks between high-risk species throughout the municipality using different tree species.
- Protect trees of significance under the Victorian Heritage Register by creating species breaks in surrounding areas.
- Continue tree trial programs to test new species, including research into disease resistant cultivars of significant tree species.
- Learn from urban forest management in other parts of Australia or globally facing similar pest and disease problems.
- Develop programs to use citizen science for urban forest surveillance of high-risk pests and pathogens.

Sycamore lace bug and elm leaf beetle infestations are a high risk for East Melbourne. If we have streets with a mix of different tree species (whilst maintaining local character) that will reduce this pest and pathogen risk. It is also important to establish isolated groups of elm and plane trees, so that different populations of these species can be protected if a large-scale pest or pathogen outbreak were to occur. Map 7. shows locations where diverse tree species will be planted in order to establish protected groups of high-risk trees in East Melbourne.

Map 7. Locations of elms, planes and eucalypt species in East Melbourne, with areas for species breaks indicated



Key

- Elm tree break zone
- Plane tree break zone
- Elm tree
- Plane trees
- Gum tree
- Parks / green spaces



How we will plant, grow and care for our trees

Tree planting has been prioritised in different streets based on where trees are needed most. The timing may change due to other projects or developments that affect tree planting or survival. New opportunities for streetscape improvement may also provide planting opportunities that are not shown in this plan.

Map 8. summarise the actions we will take in each street over the next 10 years. These actions are described as plant, grow or care for.

Plant

The future priority streets to plant in the next ten years are streetscapes with low canopy cover that have not had any new trees planted recently (in the past 10 years). These have been scheduled across a 10-year period based on their complexity.

Replacement of individual trees is an on-going process. Replacement trees are planted the following season where possible. New trees undergo three years of maintenance after planting to give them the best start. It is best practice to plant young trees so they can grow and adapt safely to the site conditions, rather than mature specimens which typically find it harder to adjust to the urban ecosystem when transplanted. All trees are geo-located, maintained through their lives and routinely assessed for health and risk.

Grow

Older, under-performing streetscapes will also be prioritised for review towards the end of the 10-year period and are labelled under 'observation for intervention'. Streets planted in the last 10 years will also be monitored to ensure maximum healthy growth rates.

Biodiversity in the municipality will be supported through targeted biodiversity plantings on streetscapes. Habitat connectivity mapping for the whole city identified the top 10 streets to prioritise habitat planting for birds and insect pollinators to strengthen the connected habitat for these animals across the City. East Melbourne has one street mapped as important for insect pollinator habitat. In addition to this, three streets have been identified as potential biodiversity corridors, due to their connections between parks and street attributes which allow more biodiverse plantings.

Care for

We are fortunate to have avenues of significantly aged trees throughout the municipality. Many of these are elm trees planted after 1888, when planned programs of street planting commenced in the municipality. Significant avenues of old trees will need increasing amounts of care, and pro-active planning into the future, particularly considering the compounding effects of climate change. These areas are labelled under 'significantly aged avenues'.

This strategy provides the long-term direction for planting in the precinct. Tree species are selected for each street be considering the layout, constraints in the streets, desired neighbourhood character, appropriate size and climate suitability. By 2032, all streetscapes within East Melbourne will have been assessed for tree planting potential.

Map 8. Planting plan over the next 10 years in East Melbourne



Key

Pollinators

Insect pollinators

Plant

Years 1 - 4

Years 5 - 7

Years 8 - 10

Grow

Observe for intervention

Monitor new tree growth

Care for

Biodiversity corridor

Significantly aged avenues

Parks / green spaces





no need for cars

roads are planted out, and we use community e-busses.

The view is beautiful

welcome to the community garden

it's quiet, and calm.

it smells like flowers...

The trees!

They're enormous!

I'm going to swim in the Birrarung

Buildings support the urban forest

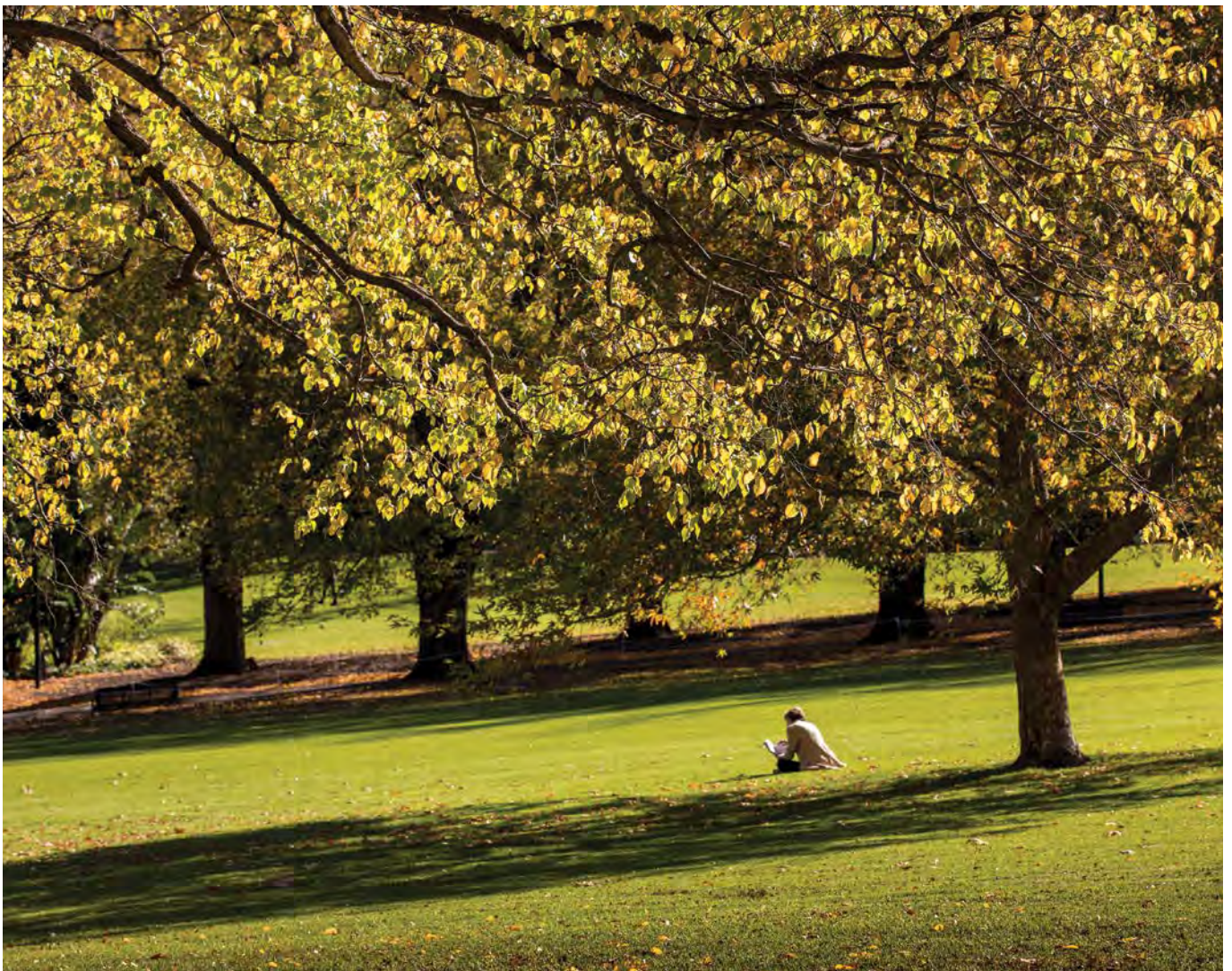
and are integrated with it.

Image. Comics by artist Sofia Sabbagh

Site specific tree planting considerations

When we come to implementing site specific tree planting, there are many additional factors we consider. We have precinct-specific datasets which inform us about:

- Opportunities for integrated water management
- Ecological connectivity of habitat and priority locations for biodiversity plantings
- Existing habitat for different animal groups
- Street constraints (footpath widths, powerlines)
- Underlying soil types
- Pre-colonisation plant communities
- Heritage overlays
- Topography and water movement
- Public and private land use
- Major capital works plans and urban renewal areas.



Ecological vegetation class

Street location types

Integrated water management catchments

Victoria heritage register

Soil

Biosecurity

Topography

Heritage overlay



How can you be involved in your local urban forest?

A key priority of the Urban Forest Strategy is to position Melbourne as a leader in urban forestry. Informing, involving the community and increasing the public profile of the urban forest are key actions to help us achieve this. There are a range of ways you can be involved with urban forest management:

- Biodiversity and sustainable gardening guides available online
- Citizen Forester Program
- Gardens for Wildlife Program
- Keep an eye out online for more resources, events and engagement.

If you are a resident of East Melbourne you can support a healthy urban forest by planting a tree on your private property. Additionally, you can consider how other plants in your garden can support local biodiversity. Map 9. shows the habitat for biodiversity in East Melbourne with existing habitat for pollinating insects, woodland birds and frogs



Map 9. Habitat in East Melbourne



Key - Habitats

- Frog
- Woodland bird
- Pollinating insect
- Parks / green spaces





East Melbourne.



Image. Comics by artist Sofia Sabbagh

How to contact us

Online:

melbourne.vic.gov.au

In person:

Melbourne Town Hall - Administration Building
120 Swanston Street, Melbourne
Business hours, Monday to Friday
(Public holidays excluded)

Telephone:

03 9658 9658
Business hours, Monday to Friday
(Public holidays excluded)

Fax:

03 9654 4854

In writing:

City of Melbourne
GPO Box 1603
Melbourne VIC 3001
Australia



Interpreter services

We cater for people of all backgrounds
Please call 03 9280 0726

03 9280 0717	廣東話
03 9280 0719	Bahasa Indonesia
03 9280 0720	Italiano
03 9280 0721	普通话
03 9280 0722	Soomaali
03 9280 0723	Español
03 9280 0725	Việt Ngữ
03 9280 0726	عربي
03 9280 0726	한국어
03 9280 0726	हिंदी
03 9280 0726	All other languages

National Relay Service:

If you are deaf, hearing impaired or speech-impaired,
call us via the National Relay Service: Teletypewriter (TTY)
users phone 1300 555 727 then ask for 03 9658 9658
9am to 5pm, Monday to Friday (Public holidays excluded)

melbourne.vic.gov.au



CITY OF MELBOURNE