

INCLUSIVE MELBOURNE ACTION PLAN

2024-2026

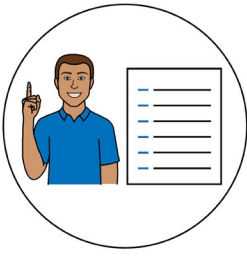


Easy English



CITY OF MELBOURNE

Blue words



Some words in this book are **blue**.

We write what the blue words mean.

Help with this book



You can get someone to help you

- understand this book

- find more information.



Contact information is at the end of this book.

We acknowledge First Nations people

Acknowledge means we understand the importance of **First Nations people's**



- culture



- language



- history.



First Nations people are the Aboriginal and Torres Strait Islander people.



In Melbourne the First Nations people are called the

- Wurundjeri Woi-wurrung

and

- Bunurong Boon Wurrung.

Melbourne is also called **Naarm**.



The Wurundjeri Woi-wurrung and Bunurong
Boon Wurrung people

- are still important to Naarm



- are the **traditional owners** of Naarm.

Traditional owners means the

Wurundjeri Woi-wurrung and

Bunurong Boon Wurrung people



- have been in Naarm for many years



- look after the land, water and sky.



CITY OF MELBOURNE

About this book

This book is from the City of Melbourne.



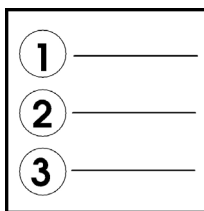
This book is about our **Inclusive** Melbourne Action Plan.

Inclusive means everyone can be part of something.



Our Inclusive Melbourne Action Plan says how we will make Melbourne more inclusive.

We call it **our plan**.



Our plan has

- 3 areas

and

- 4 focus groups.

1 We will have inclusive places and services



We want the City of Melbourne to be a work place that

- is safe



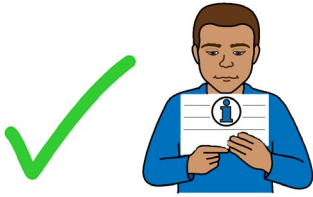
- welcomes everyone



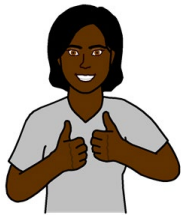
- is **accessible**.

Accessible means easy for everyone to use.

We want all our information to be



- accessible
- inclusive.



We want all our services and programs to be good for everyone.



We want all our events to be good for everyone.



We want all our public places to be

- accessible



- safe



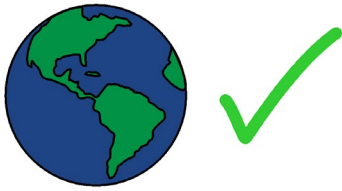
- inclusive.

2 We want a sustainable and inclusive economy



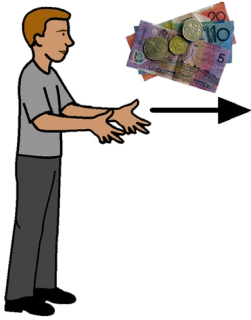
Sustainable means something

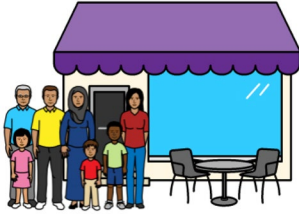
- lasts a long time
- is good for the world.



Economy is the word we use to talk about

- money we make
- what we spend money on.

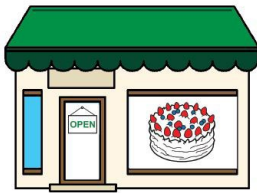




We want to support all our community groups and businesses.

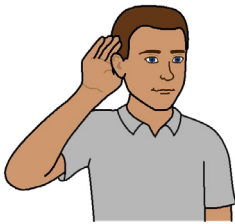


We want everyone to be able to get a job.



We want everyone to be able to start a business.

3 We want everyone to be a part of Melbourne life

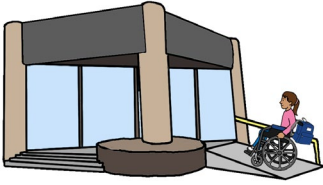


We want everyone to feel that we listen to what they tell us.



We want to make sure we think about what people want when we make decisions.

How will we work with people with disability?



1. Accessible places and spaces

We will make sure people with disability can use our places and spaces.



For example, we will have toilets and changing rooms that people with disability can use.



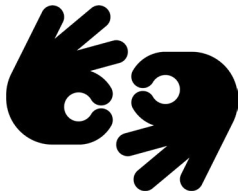
We will ask people with disability to help us plan our places and spaces.



2. Accessible and inclusive events

We will think about the needs of people with disability when we plan events.

We will have information in **Auslan** at our events.



Auslan is the Australian sign language.



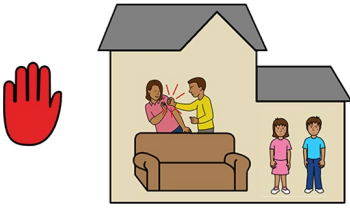
We will show other organisations how to have accessible and inclusive events.

3. Accessible and inclusive businesses

We will show at least 15 businesses how to be accessible and inclusive.



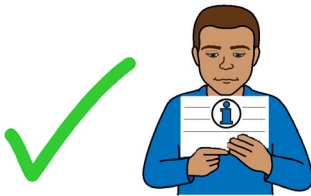
4. Information about family and sexual violence for people with disability



Family violence is when someone hurts another person in their family.



Sexual violence is when someone does sexual things that another person does **not** want.



We want accessible information about family and sexual violence services for people with disability.



We will make sure our family and children's services are accessible.

5. Accessible information



We will **review** and **update** our Accessible Melbourne website.



Review means we check if something is good.

Update means we make something better.



We will ask people with disability to help us make our website information accessible.

How will we work with women?



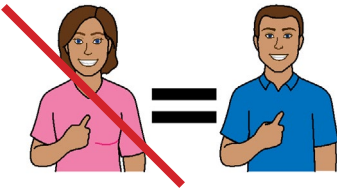
1. Aboriginal women

We will work with an Aboriginal community group to look at services for

- Aboriginal women who have had family violence done to them
- Aboriginal women who have nowhere to live.



2. We will teach our workers about violence against women and gender inequality



Gender inequality means someone is not treated fairly because of their gender.



For example, because they are a woman.



We will make sure everyone who works for us knows how to

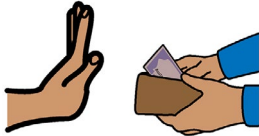
- respond to violence against women
- stop violence against women
- make sure women get treated fairly.



3. We will tell the community about violence against women and gender inequality



We want everyone to understand that people who give **unpaid care** are important.



Unpaid care is when you look after someone and do not get any money.



We want people to know that it is wrong to use a phone or computer to abuse someone.



We want men and boys to help stop violence against women.



We want women to learn

- how to protect their money
- about **financial abuse**.



Financial abuse means

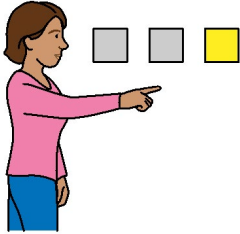
- you do not let someone have money

or



- you steal money from someone.

4. We will support women to be part of the economy



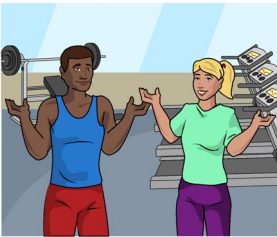
We will support women to

- make their own choices about what they do with their money



- have their own businesses.

5. We will make sure women get equal access to places and services



For example, we will make sure women have equal access to places where sport is played.



We want more women and girls to play sport and exercise.

How will we work with LGBTIQA+ people?



LGBTIQA+ means what you feel and understand about who you are as a person.



For example

- if you are attracted to men **or** women



- if you are attracted to men **and** women



- if you are not attracted to anyone



- if you feel you are a man **or** a woman

- if you feel you are a man **and** a woman



- if you feel you are not a man **or** a woman.



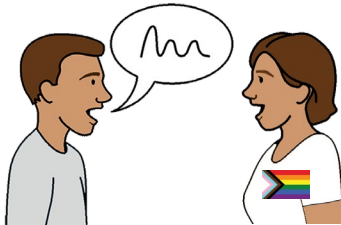
1. We will make a special group to help us know what LGBTIQ+ people want

The special group will **advise** us about our work with LGBTIQ+ people.



Advise means the group gives us information about how we can do things better.

2. We will work with LGBTIQ+ people to give better services

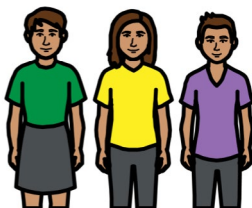


We will ask at least 3 LGBTIQ+ organisations how we can

- improve how we communicate with LGBTIQ+ people



- involve LGBTIQ+ people in what we do



- have good services for young LGBTIQ+ people.



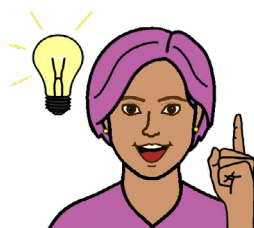
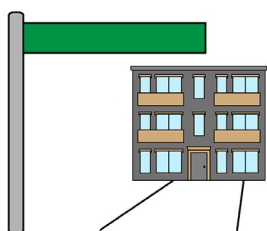
3. **We will work with young LGBTIQ+ people to improve safety and inclusion**



4. **We will recognise special LGBTIQ+ people who have lived in Melbourne**

Recognise means we do something to show how important someone is.

For example, we give their name to a road or place.



5. **We will get LGBTIQ+ people more involved with what we do**

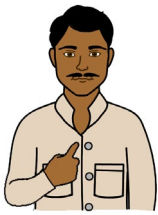
How will we work with people from different cultures?



1. We will look for ways to stop racial discrimination

Racial discrimination is when you are not treated fairly because of your

- race
- culture.



2. We will help people from different cultures find jobs

For example, we will help people get **internships** that might help them get a job.

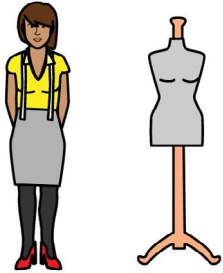


Internship means you go to a work place to find out more about a job.



3. We will help businesses know about different cultures

We will tell businesses how they can make people from different cultures feel welcome.

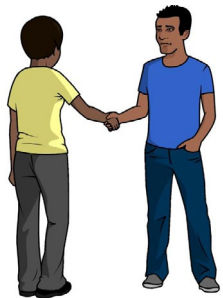


4. We will make Melbourne Fashion Week inclusive for everyone



5. We will help people from different cultures learn about each other

We want people from different cultures to



- talk to each other
- **respect** each other.

Respect means



- we understand everyone is important
- we are kind to everyone.

More information



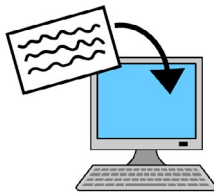
For more information contact the
City of Melbourne.



Call 03 9658 9658



Website melbourne.vic.gov.au



Email
enquiries@melbourne.vic.gov.au



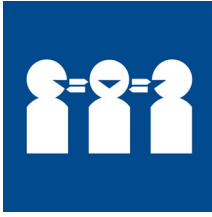
CITY OF MELBOURNE

**You can read the full Inclusive Melbourne
Strategy on our website.**



Website
melbourne.vic.gov.au/inclusive-melbourne-strategy

If you need help with English



Use the free Translating and Interpreting Service or TIS to make a phone call.

You can call the TIS in your language.



Call 131 450

Give the TIS officer the phone number you want to call.

If you need help to speak or listen



Use the National Relay Service to make a phone call.

You must sign up to the service first.



Website accesshub.gov.au/nrs-helpdesk



Call 1800 555 660

This Easy English document was created by Scope (Aust) Ltd. in November 2024 using Picture Communication Symbols (PCS). PCS is a trademark of Tobii Dynavox, LLC. All rights reserved. Used with permission. This document must not be sold to third parties. The images must not be reused without permission. For more information about the images, contact Scope on 1300 472 673 or visit scopeaust.org.au

